

Datasheet for ABIN965369

## Goat anti-Rabbit IgG (Heavy & Light Chain) Antibody - Preadsorbed



[Go to Product page](#)

1 Image

1 Publication

### Overview

Quantity:	1 mg
Target:	IgG
Binding Specificity:	Heavy & Light Chain
Reactivity:	Rabbit
Host:	Goat
Clonality:	Polyclonal
Application:	ELISA, Immunohistochemistry (IHC), Western Blotting (WB)

### Product Details

Immunogen:	Immunogen: Rabbit IgG whole molecule
Isotype:	IgG
Fragment:	Fab fragment
Specificity:	Assay by immunoelectrophoresis resulted in a single precipitin arc against anti-Goat Serum.
Purification:	Preadsorption: Solid phase absorption

### Target Details

Target:	IgG
Abstract:	<a href="#">IgG Products</a>
Target Type:	Antibody
Background:	Synonyms: Goat Fab Anti-Rabbit IgG Antibody, Goat Fab Fragment Anti-Rabbit IgG Antibody

## Target Details

---

Background: Fab Anti-Rabbit IgG (H&L) Antibody generated in goat detects immunoglobulin g from rabbit, both heavy and light chains of the antibody molecule are present. Each IgG has two antigen binding sites. Representing approximately 75 % of serum immunoglobulins, IgG is the most abundant antibody isotype found in the circulation. IgG molecules are synthesized and secreted by plasma B cells. Secondary Antibodies are available in a variety of formats and conjugate types. When choosing a secondary antibody product, consideration must be given to species and immunoglobulin specificity, conjugate type, fragment and chain specificity, level of cross-reactivity, and host-species source and fragment composition.

## Application Details

---

Application Notes: Immunohistochemistry Dilution: 1:1,000 - 1:5,000  
Application Note: Suitable for highly specific immunological methods requiring extremely low background levels, absence of F(c) mediated binding, lot-to-lot consistency, high titer and specificity.  
ELISA Dilution: 1:4,000 - 1:20,000  
Western Blot Dilution: 1:2,000 - 1:10,000

Restrictions: For Research Use only

## Handling

---

Format: Liquid

Concentration: 1.0 mg/mL

Buffer: Buffer: 0.02 M Potassium Phosphate, 0.15 M Sodium Chloride, pH 7.2  
Stabilizer: None  
Preservative: 0.01 % (w/v) Sodium Azide

Preservative: Sodium azide

Precaution of Use: This product contains Sodium azide: a POISONOUS AND HAZARDOUS SUBSTANCE which should be handled by trained staff only.

Handling Advice: Dilute only prior to immediate use. Centrifuge product if not completely clear after standing at room temperature.

Storage: 4 °C

Storage Comment: Store vial at 4 °C prior to opening. This product is stable at 4 °C as an undiluted liquid.

Expiry Date: 12 months

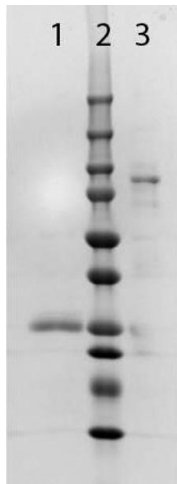
## Publications

---

Product cited in: Dembla, Kesharwani, Natarajan, Fecher-Trost, Fairless, Williams, Flockerzi, Diem, Schwarz, Schmitz: "Early auto-immune targeting of photoreceptor ribbon synapses in mouse models of multiple sclerosis." in: **EMBO molecular medicine**, Vol. 10, Issue 11, (2019) ([PubMed](#)).

## Images

---



### SDS-PAGE

**Image 1.** SDS PAGE of Fab Anti-RABBIT IgG (GOAT) Antibody. Lane 1: 1x Reduced, Fab Anti-RABBIT IgG Antibody. Lane 2: Molecular Weight Ladder. Lane 3: 1x Non-Reduced, Fab Anti-RABBIT IgG Antibody. 4-20% Lonza SDS-PAGE; Coomassie Stained.