

Datasheet for ABIN965403

anti-NFkB antibody**3** Images[Go to Product page](#)

Overview

Quantity:	1 kit
Target:	NFkB
Reactivity:	Human
Host:	Please inquire
Conjugate:	This NFkB antibody is un-conjugated
Application:	Control Peptide (CP)

Product Details

Target Details

Target:	NFkB
Alternative Name:	NFkB (NFkB Products)
Background:	Synonyms: Anti-NFKB p50, Anti-NFKB p65, Rabbit Anti-NFKB cRel, Anti-IKBAalpha, Control peptides, antibody sample kits
Pathways:	Ubiquitin Proteasome Pathway , S100 Proteins

Application Details

Application Notes:	Each kit contains one unit of the following products: Anti-NFKB p50 (NFKB1) (RABBIT) Antibody (100 µL) Anti-NFKB p65 (Rel A) (RABBIT) Antibody (100 µL) Anti-NFKB cRel (RABBIT) Antibody (100 µL) Anti-IKBA C-terminal (RABBIT) Antibody (100 µL) Anti-RABBIT IgG (H&L) (GOAT) Peroxidase Conjugated Antibody (100 µg) CONTROL PEPTIDE for Anti-NFKB p50 (NFKB1)
--------------------	--

Application Details

(RABBIT) Antibody (50 µg) CONTROL PEPTIDE for Anti-NFKB p65 (Rel A) (RABBIT) Antibody (50 µg) CONTROL PEPTIDE for Anti-NFKB cRel (RABBIT) Antibody (50 µg) CONTROL PEPTIDE for Anti-IKBα C-terminal (RABBIT) Antibody ((50 µg)

Restrictions: For Research Use only

Handling

Format: Liquid

Storage: -20 °C

Images



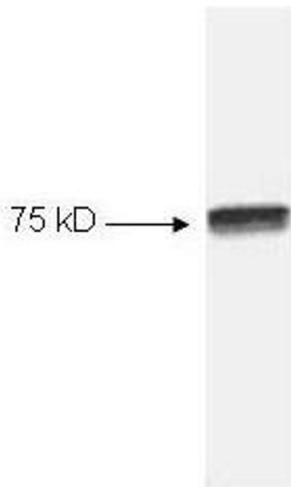
Western Blotting

Image 1. Western blot of HeLa cell extract. A predominant band ~65 kDa (arrowhead) corresponding to NFκB p65 Rel A is observed with anti NFκB antibody 100-4165. All incubations except color development were performed using TBS supplemented with 0.1% Tween-20 at room temperature. The membrane was blocked in 5% dry milk for 2 h. After washing, a 1:5,000 dilution of the primary antibody was added to the membrane and incubated for 2 h. Washes with buffer were performed 4 times for 5' each. The western blot was incubated with secondary antibody (HRP Goat-a-Rabbit IgG [H&L]) diluted 1:2,000 for 1 h. Washes with TBS preceded color development.



Western Blotting

Image 2. Western blot of HeLa cell extract using Anti-NFKB p50 (NFKB1) Antibody 100-4164. All incubations except color development were performed using TBS supplemented with 0.1% Tween-20 at room temperature. The membrane was blocked in 5% dry milk for 2 h. After washing, a 1:1,000 dilution of the primary antibody was added to the membrane and incubated for 2 h. Washes with buffer were performed 4 times for 5' each. The



western blot was incubated with secondary antibody (HRP Goat-a-Rabbit IgG [H&L]) diluted 1:2,000 for 1 h. Washes with TBS preceded color development.

Western Blotting

Image 3. Western blot of HeLa cell extract using p/n 100-4166 Anti-NFKB cRel (RABBIT) Antibody (100 μ L). All incubations except color development were performed using TBS supplemented with 0.1% Tween-20 at room temperature. The membrane was blocked in 5% dry milk for 2 h. After washing, a 1:1,000 dilution of the primary antibody was added to the membrane and incubated for 2 h. Washes with buffer were performed 4 times for 5' each. The western blot was incubated with secondary antibody (HRP Goat-a-Rabbit IgG [H&L]) diluted 1:2,000 for 1 h. Washes with TBS preceded color development.