

Datasheet for ABIN965412

GFP Western Blot Kit: for GFP Chemiluminescent Western Blotting

[Go to Product page](#)

1 Image

Overview

Quantity:	1 kit
Application:	Dot Blot (DB), Western Blotting (WB)

Product Details

Cross-Reactivity:	recombinant GFP (rGFP), enhanced GFP (eGFP)
-------------------	---

Target Details

Background:	<p>GFP Chemiluminescent Western Blot Kit allows for the detection of GFP-tagged recombinant proteins present in cell lysates provided by the user. After protein separation by SDS-PAGE and transfer, the membrane is probed with monoclonal Anti-GFP. Detection of the membrane bound antibody-antigen complex is achieved by the addition of a secondary antibody conjugated to the enzyme horseradish peroxidase. The enzyme reacts with a specialized formulation of luminol, an extremely sensitive, non-radioactive substrate that emits light and allows visualization using X-ray film or other imaging methods, including highly sensitive CCD cameras and imaging systems.</p> <p>Synonyms: GFP Western Blotting Kit, GFP Chemiluminescent Kit, Green Fluorescent Protein Antibody Kit, Immunoblotting Kit, GFP, rGFP, eGFP</p>
-------------	---

Application Details

Application Notes:	<p>GFP Western Blot Kit is ideal for detection of GFP-tagged recombinant proteins by western blot. The GFP Western Blot kit makes use of optimized anti-GFP antibody. The Chemiluminescent GFP Western Blot kit is useful for both western blotting and dot blotting methods. Please read the entire product insert prior to use.</p>
--------------------	---

Application Details

Comment: Detection Kit Type: Chemiluminescent Western Blot Kit

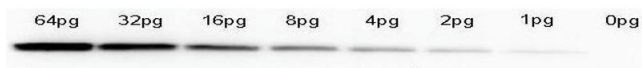
Restrictions: For Research Use only

Handling

Handling Advice: Wash buffers MUST NOT contain SODIUM AZIDE or other inhibitors of peroxidase activity!

Storage: RT/4 °C

Images



Western Blotting

Image 1. Western Blot of anti-GFP monoclonal antibody. Lane 1: 64pg of recombinant GFP protein were spiked into a HeLa cell-derived lysates . Lane 2: 32pg of recombinant GFP protein were spiked into a HeLa cell-derived lysates. Lane 3: 16pg of recombinant GFP protein were spiked into a HeLa cell-derived lysates. Lane 4: 8pg of recombinant GFP protein were spiked into a HeLa cell-derived lysates. Lane 5: 4pg of recombinant GFP protein were spiked into a HeLa cell-derived lysates. Lane 6: 2pg of recombinant GFP protein were spiked into a HeLa cell-derived lysates. Lane 7: 1g of recombinant GFP protein were spiked into a HeLa cell-derived lysates. Lane 8: 0pg of recombinant GFP protein were spiked into a HeLa cell-derived lysates. Primary antibody: anti-GFP monoclonal antibody at 1:400 for overnight at 4°C. Secondary antibody: HRP-conjugated anti-Mouse IgG was performed at a dilution of 1:20,000 for 1h at 4°C. Block: TTBS supplemented with 1% BSA for 1 h at 4°C. Predicted/Observed size: 27 kDa for GFP. Other band(s): none.