

Datasheet for ABIN965422

Isotyping Kit: Rapid Mouse Monoclonal Isotyping Kit IsoMax™[Go to Product page](#)**2** Images

Overview

Quantity: 10 pack

Application: Isotyping (IsoT)

Product Details

Brand: IsoMax™

Characteristics: Concentration Definition: Components in this kit are sufficient to run 10 isotype class and subclass determinations.

Target Details

Background: Use IsoMax™ Rapid Mouse Monoclonal Isotyping Kit for determining the class and subclass of a monoclonal antibody. Isotype determination is a prerequisite for selecting the best immunoglobulin purification method. For example, IgA and IgM are often best purified by size (gel filtration) or on immunoaffinity support columns, whereas IgG2a and IgG2b can be purified by protein A chromatography at a pH of 7 to 8. IgG1 binds best to protein A at a pH of 8 to 9. Isotype determination is also required if an antibody is to be digested by pepsin or papain as each isotype shows varying sensitivity to enzymatic digestion. Please call technical service for further assistance.

Synonyms: Isotyping kit, mouse subclass determination, IgG isotype, immunoglobulin isotyping

Application Details

Application Notes: Each kit contains 10 packs of 2 cassettes each: one cassette for detecting IgG1, IgG2a and IgG2b the other cassette for detecting IgG3, IgA and IgM. When a properly diluted sample containing a specific isotype antibody is added to the sample well, a specific class and

Application Details

subclass soluble complex is formed with the embedded gold conjugates. These complexes travel the length of the membrane and are resolved on the anti-isotype and anti-class-specific antibody impregnated membrane. A control line will appear on the membrane in the region marked "C" on the cassette indicating a successful run (positive internal control). Typically when antibodies are applied at a concentration of 10 ng/mL the best results are obtained by reading the cassette 5 to 10 minutes after application. Results should NOT be read after 10 minutes.

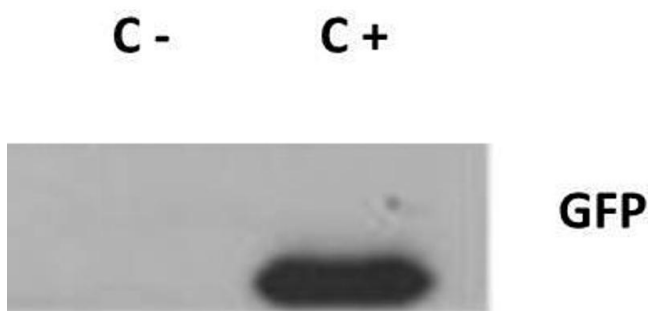
Comment: Detection Kit Type: Isotyping Kit

Restrictions: For Research Use only

Handling

Storage: RT/4 °C

Images



Western Blotting

Image 1.



Image 2.