

Datasheet for ABIN967456
anti-SERPINB5 antibody



[Go to Product page](#)

2 Images

3 Publications

Overview

Quantity:	0.1 mg
Target:	SERPINB5
Reactivity:	Human
Host:	Mouse
Clonality:	Monoclonal
Conjugate:	This SERPINB5 antibody is un-conjugated
Application:	Western Blotting (WB)

Product Details

Brand:	BD Pharmingen™
Immunogen:	Recombinant Human Maspin
Clone:	G167-70
Isotype:	IgG2b
Characteristics:	<ol style="list-style-type: none">1. Since applications vary, each investigator should titrate the reagent to obtain optimal results.2. Please refer to us for technical protocols.3. Caution: Sodium azide yields highly toxic hydrazoic acid under acidic conditions. Dilute azide compounds in running water before discarding to avoid accumulation of potentially explosive deposits in plumbing.
Purification:	The monoclonal antibody was purified from tissue culture supernatant or ascites by affinity chromatography.

Target Details

Target:	SERPINB5
Alternative Name:	Maspin (SERPINB5 Products)
Background:	<p>Maspin is a 42 kDa protein that may play a role in human breast cancer by functioning as a tumor suppressor. Maspin is expressed in normal mammary epithelial cells, but there is a loss of expression in invasive breast cancer including lymph node and distant metastases. Further, maspin is not expressed in most mammary carcinoma cell lines. Mammary carcinoma cells transfected with recombinant maspin have a reduced ability to migrate through reconstituted basement membrane and lose their ability to form tumors in nude mice, providing support for maspin as a tumor suppressor protein. Maspin has homology to members of the serpin family of protease inhibitors, some of which have been implicated in the regulation of invasion and metastasis. Yet protease inhibitory activity has not been detected using recombinant maspin. It has been suggested that maspin, unlike most serpins, may be a ligand-binding serpin rather than a protease inhibitor. However, the question of whether or not maspin has protease inhibitor activity remains to be determined. G167-70 is specific for human maspin. It detects maspin as a 42 kD protein in western blots of normal human mammary epithelial cells. Many mammary tumor cell lines including MDA-MB-231 (ATCC HTB 26) and MDA-MB-435S (ATCC HTB 129) lack maspin expression and are suitable as negative controls. Purified recombinant human maspin from a yeast expression system was used as immunogen.</p>
Molecular Weight:	42 kDa
Pathways:	p53 Signaling

Application Details

Application Notes:	Applications include western blot analysis (1-2 µg/ml). A-431 human epidermal carcinoma cells (ATCC CRL 1555) are recommended as a positive control for this application.
Comment:	Related Products: ABIN967389, ABIN968533
Restrictions:	For Research Use only

Handling

Format:	Liquid
Concentration:	0.5 mg/mL
Buffer:	Aqueous buffered solution containing ≤0.09 % sodium azide.
Preservative:	Sodium azide

Handling

Precaution of Use: This product contains Sodium azide: a POISONOUS AND HAZARDOUS SUBSTANCE which should be handled by trained staff only.

Storage: 4 °C

Storage Comment: Store undiluted at 4°C.

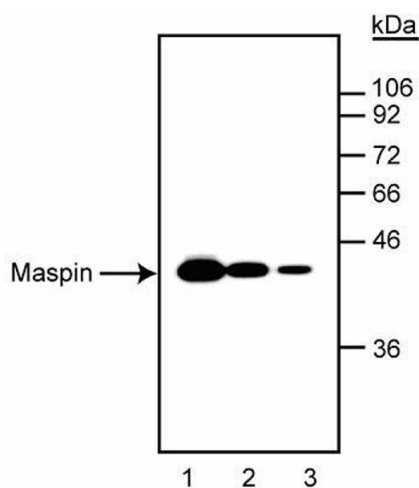
Publications

Product cited in: Sheng, Pemberton, Sager: "Production, purification, and characterization of recombinant maspin proteins." in: **The Journal of biological chemistry**, Vol. 269, Issue 49, pp. 30988-93, (1995) ([PubMed](#)).

Hopkins, Whisstock: "Function of maspin." in: **Science (New York, N.Y.)**, Vol. 265, Issue 5180, pp. 1893-4, (1994) ([PubMed](#)).

Zou, Anisowicz, Hendrix, Thor, Neveu, Sheng, Rafidi, Seftor, Sager: "Maspin, a serpin with tumor-suppressing activity in human mammary epithelial cells." in: **Science (New York, N.Y.)**, Vol. 263, Issue 5146, pp. 526-9, (1994) ([PubMed](#)).

Images



Western Blotting

Image 1. Western blot analysis of maspin in A-431 human epidermal carcinoma cell lysates. The G167-70 antibody was titrated between 1 µg/ml to 0.04 µg/ml (lanes 1-3) and identifies maspin at ~42 kD.

Image 2.

