



Datasheet for ABIN967490
anti-SELPLG antibody



[Go to Product page](#)

1 Image

1 Publication

Overview

Quantity:	0.1 mg
Target:	SELPLG
Reactivity:	Human
Host:	Mouse
Clonality:	Monoclonal
Conjugate:	This SELPLG antibody is un-conjugated
Application:	Flow Cytometry (FACS), Western Blotting (WB), Immunoprecipitation (IP), Blocking Reagent (BR)

Product Details

Brand:	BD Pharmingen™
Clone:	KPL-1
Isotype:	IgG1 kappa
Characteristics:	<ol style="list-style-type: none">1. Since applications vary, each investigator should titrate the reagent to obtain optimal results.2. Please refer to us for technical protocols.3. Caution: Sodium azide yields highly toxic hydrazoic acid under acidic conditions. Dilute azide compounds in running water before discarding to avoid accumulation of potentially explosive deposits in plumbing.
Purification:	The monoclonal antibody was purified from tissue culture supernatant or ascites by affinity chromatography.

Target Details

Target:	SELPLG
Alternative Name:	CD162 (SELPLG Products)
Background:	<p>Reacts with p-selectin glycoprotein ligand-1 (PSGL-1), a 120 - 220 kDa, mucin-like type I transmembrane glycoprotein. CD162 is expressed on neutrophils, monocytes, and most lymphocytes. CD162 binds to CD62P (P-Selectin), CD62E (E-Selectin) and CD62L (L-Selectin). This molecule mediates rolling of leukocytes on activated endothelium and the interaction between leukocytes and activated platelets or other leukocytes found at inflammatory sites. It has also been reported that this clone completely inhibits the interaction between P-Selectin and either CD4-T cells or neutrophils. This antibody is routinely tested by flow cytometric analysis.</p> <p>Synonyms: PSGL-1, p-selectin glycoprotein ligand-1</p>

Application Details

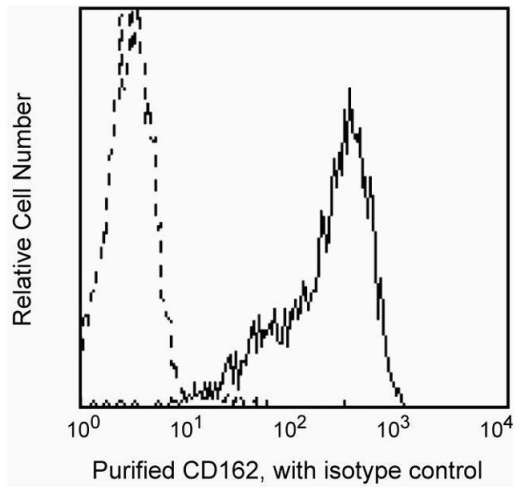
Restrictions:	For Research Use only
---------------	-----------------------

Handling

Format:	Liquid
Concentration:	0.5 mg/mL
Buffer:	Aqueous buffered solution containing ≤ 0.09 % sodium azide.
Preservative:	Sodium azide
Precaution of Use:	This product contains Sodium azide: a POISONOUS AND HAZARDOUS SUBSTANCE which should be handled by trained staff only.
Storage:	4 °C
Storage Comment:	Store undiluted at 4° C.

Publications

Product cited in:	Snapp, Ding, Atkins, Warnke, Luscinskas, Kansas: "A novel P-selectin glycoprotein ligand-1 monoclonal antibody recognizes an epitope within the tyrosine sulfate motif of human PSGL-1 and blocks recognition of both P- and L-selectin." in: Blood , Vol. 91, Issue 1, pp. 154-64, (1998) (PubMed).
-------------------	---



Flow Cytometry

Image 1. Profile of CD162 expressed on peripheral blood lymphocytes analyzed on a FACScan (BDIS, San Jose, CA)