



[Go to Product page](#)

Datasheet for ABIN967516

anti-SRSF2 antibody

2 Images

3 Publications

Overview

Quantity:	0.1 mg
Target:	SRSF2
Reactivity:	Human
Host:	Mouse
Clonality:	Monoclonal
Conjugate:	This SRSF2 antibody is un-conjugated
Application:	Western Blotting (WB), Immunoprecipitation (IP), Immunofluorescence (IF)

Product Details

Brand:	BD Pharmingen™
Immunogen:	Partially purified spliceosomes
Clone:	AlphaSC35
Isotype:	IgG1 kappa
Characteristics:	<ol style="list-style-type: none">1. Since applications vary, each investigator should titrate the reagent to obtain optimal results.2. Please refer to us for technical protocols.3. Caution: Sodium azide yields highly toxic hydrazoic acid under acidic conditions. Dilute azide compounds in running water before discarding to avoid accumulation of potentially explosive deposits in plumbing.
Purification:	The monoclonal antibody was purified from tissue culture supernatant or ascites by affinity chromatography.

Target Details

Target:	SRSF2
Alternative Name:	SC35 (SRSF2 Products)
Background:	<p>SC35 belongs to a highly conserved SR splicing factor family. Members of this family have characteristic RNA-binding domains and serine/arginine-rich (SR) motifs. SR proteins are expressed in the nucleus and are essential pre-messenger RNA splicing factors. Nuclear pre-messenger RNA takes place in spliceosomes, multicomponent complexes consisting of five small nuclear ribonucleoprotein particles (U1, U2, U4, U5, U6) and other non-snRNP factors such as SC35. SC35 is necessary for an early step in spliceosome assembly and can also influence the selection of alternative splice sites. SC35 is identified as a 35 kDa protein in SDS/PAGE. Clone alphaSC35 has been shown to recognize SC35 in human, and rat cells. However, it should recognize SC35 from any species, as SC35 is conserved from Drosophila to man. Partially purified spliceosomes were used as immunogen.</p>

Application Details

Application Notes:	<p>Staining is nuclear, a punctate or speckled nuclear pattern may be detected. Only a subset of cells are stained, the percentage may vary between cell type and experimental conditions. MG-63 human osteosarcoma, HeLa carcinoma (ATCC CCL-2), or BRL-3A rat liver cells (ATCC CRL-1442) are suggested as positive controls.</p>
Restrictions:	For Research Use only

Handling

Format:	Liquid
Concentration:	0.5 mg/mL
Buffer:	Aqueous buffered solution containing ≤ 0.09 % sodium azide.
Preservative:	Sodium azide
Precaution of Use:	This product contains Sodium azide: a POISONOUS AND HAZARDOUS SUBSTANCE which should be handled by trained staff only.
Storage:	4 °C
Storage Comment:	Store undiluted at 4°C.

Publications

- Product cited in: Sukegawa, Blobel: "A putative mammalian RNA helicase with an arginine-serine-rich domain colocalizes with a splicing factor." in: **The Journal of biological chemistry**, Vol. 270, Issue 26, pp. 15702-6, (1995) ([PubMed](#)).
- Fu: "Specific commitment of different pre-mRNAs to splicing by single SR proteins." in: **Nature**, Vol. 365, Issue 6441, pp. 82-5, (1993) ([PubMed](#)).
- Fu, Maniatis: "Factor required for mammalian spliceosome assembly is localized to discrete regions in the nucleus." in: **Nature**, Vol. 343, Issue 6257, pp. 437-41, (1990) ([PubMed](#)).

Images

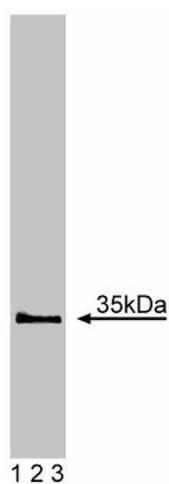


Image 1.

Western Blotting

Image 2. Western blot analysis of SC35. Lysates from MG-63 human osteosarcoma cells were probed with anti-SC35 (clone alphaSC35, ABIN967516). SC35 is detected as a band of ~35 kDa.