



Datasheet for ABIN967799
anti-PTPRZ1 antibody (AA 2098-2307)



[Go to Product page](#)

5 Images

5 Publications

Overview

Quantity:	150 µg
Target:	PTPRZ1
Binding Specificity:	AA 2098-2307
Reactivity:	Human, Mouse, Rat
Host:	Mouse
Clonality:	Monoclonal
Application:	Western Blotting (WB), Immunohistochemistry (IHC), Immunofluorescence (IF), Immunoprecipitation (IP), BioImaging (BI)

Product Details

Immunogen:	Human RPTPbeta aa. 2098-2307
Clone:	12-RPTPb
Isotype:	IgG1
Cross-Reactivity:	Mouse (Murine), Rat (Rattus)
Characteristics:	<ol style="list-style-type: none">1. Since applications vary, each investigator should titrate the reagent to obtain optimal results.2. Please refer to us for technical protocols.3. Caution: Sodium azide yields highly toxic hydrazoic acid under acidic conditions. Dilute azide compounds in running water before discarding to avoid accumulation of potentially explosive deposits in plumbing.4. Source of all serum proteins is from USDA inspected abattoirs located in the United States.
Purification:	The monoclonal antibody was purified from tissue culture supernatant or ascites by affinity

Product Details

chromatography.

Target Details

Target: PTPRZ1

Alternative Name: RPTP beta ([PTPRZ1 Products](#))

Background: Receptor-type protein-tyrosine phosphatase beta (RPTPbeta or PTPzeta) is the first mammalian tyrosine phosphatase to be characterized whose expression is limited to the nervous system. RPTPbeta consists of a large extracellular domain, a single transmembrane domain, and a cytoplasmic portion with two tandem catalytic domains. Three forms of RPTPbeta exist which appear to be derived from alternative splicing. The 9.5 kb and 6.4 kb transcripts encode two transmembrane forms. The 8.5 kb transcript encodes a secreted form of the extracellular domain of RPTPbeta. A region of 266 amino acids in the extracellular domain shows a high degree of homology with carbonic anhydrase. This region is very similar to rat brain chondroitin sulfate proteoglycan (3F8 PG) which appears to be the rat homologue of the entire extracellular domain of human RPTPbeta. The apparent molecular weight of human RPTPbeta is 250 kDa and approaches 300 kDa when the protein is glycosylated. This antibody was generated against a region known to have a high degree of homology to other proteoglycans, such as RPTPgamma (75% homology). This antibody is routinely tested by western blot analysis.

Synonyms: PTPzeta, Receptor-type Protein-Tyrosine Phosphatase beta

Molecular Weight: 250 kDa

Application Details

Comment: Related Products: [ABIN968537](#), [ABIN967389](#)

Restrictions: For Research Use only

Handling

Format: Liquid

Concentration: 250 µg/mL

Buffer: Aqueous buffered solution containing BSA, glycerol, and ≤0.09 % sodium azide.

Preservative: Sodium azide

Precaution of Use: This product contains Sodium azide: a POISONOUS AND HAZARDOUS SUBSTANCE which

Handling

should be handled by trained staff only.

Storage: -20 °C

Storage Comment: Store undiluted at -20°C.

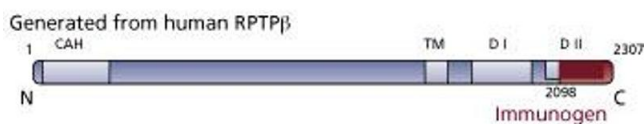
Publications

Product cited in: Jan, Adolfsson, Allaman, Buccarello, Magistretti, Pfeifer, Muhs, Lashuel: "Abeta42 neurotoxicity is mediated by ongoing nucleated polymerization process rather than by discrete Abeta42 species." in: **The Journal of biological chemistry**, Vol. 286, Issue 10, pp. 8585-96, (2011) ([PubMed](#)).

Deshmukh, Salehzadeh, Metayer-Coustard, Fahlman, Nair, Al-Khalili: "Post-transcriptional gene silencing of ribosomal protein S6 kinase 1 restores insulin action in leucine-treated skeletal muscle." in: **Cellular and molecular life sciences : CMLS**, Vol. 66, Issue 8, pp. 1457-66, (2009) ([PubMed](#)).

Images

Image 1.





Western Blotting

Image 2.



Western Blotting

Image 3. Western blot analysis of RPTPbeta on a Jurkat cell lysate. Lane 1: 1:250, lane 2: 1:500, lane 3: 1:1000 dilution of the anti- RPTPbeta antibody.

Please check the [product details page](#) for more images. Overall 5 images are available for ABIN967799.