

Datasheet for ABIN967932  
**anti-Flotillin 2 antibody (AA 122-379)**

2 Images

5 Publications

[Go to Product page](#)

## Overview

Quantity:	50 µg
Target:	Flotillin 2 (FLOT2)
Binding Specificity:	AA 122-379
Reactivity:	Human, Rat, Mouse, Dog, Chicken
Host:	Mouse
Clonality:	Monoclonal
Conjugate:	This Flotillin 2 antibody is un-conjugated
Application:	Western Blotting (WB), Immunohistochemistry (IHC), Immunofluorescence (IF), Immunoprecipitation (IP)

## Product Details

Immunogen:	Human ESA aa. 122-379
Clone:	29-Flotillin
Isotype:	IgG1
Cross-Reactivity:	Dog (Canine), Rat (Rattus), Mouse (Murine), Chicken
Characteristics:	<ol style="list-style-type: none"><li>1. Since applications vary, each investigator should titrate the reagent to obtain optimal results.</li><li>2. Please refer to us for technical protocols.</li><li>3. Caution: Sodium azide yields highly toxic hydrazoic acid under acidic conditions. Dilute azide compounds in running water before discarding to avoid accumulation of potentially explosive deposits in plumbing.</li><li>4. Source of all serum proteins is from USDA inspected abattoirs located in the United States.</li></ol>

## Product Details

Purification:	The monoclonal antibody was purified from tissue culture supernatant or ascites by affinity chromatography.
---------------	---

## Target Details

Target:	Flotillin 2 (FLOT2)
Alternative Name:	Flotillin-2 ( <a href="#">FLOT2 Products</a> )
Background:	<p>Flotillin-2/ESA (epidermal surface antigen) plays a role in intercellular epidermal adhesion. Epidermal surface proteins have an important role in normal epidermal maintenance and function. In addition, they are involved in various autoimmune diseases in which auto-antibodies bind to normal epidermal cell surface proteins. This binding causes cell disadherence that leads to blister formation. Such antibodies have been utilized to identify new proteins involved in epidermal cell adhesion. One of these antibodies, ECS-1, was used to isolate Flotillin-2/ESA. The single copy ESA gene is located on the long arm of human chromosome 17, in the region containing the gene for neurofibromatosis 1 (NF1). ESA mRNA is expressed in cultured keratinocytes, melanocytes, fibroblasts, and carcinoma and melanoma cell lines. Flotillin-2/ESA may play a critical role in epidermal structure and maintenance.</p> <p>Synonyms: ESA</p>
Molecular Weight:	42 kDa

## Application Details

Comment:	Related Products: ABIN968536, ABIN967389
Restrictions:	For Research Use only

## Handling

Format:	Liquid
Concentration:	250 µg/mL
Buffer:	Aqueous buffered solution containing BSA, glycerol, and ≤0.09 % sodium azide.
Preservative:	Sodium azide
Precaution of Use:	This product contains Sodium azide: a POISONOUS AND HAZARDOUS SUBSTANCE which should be handled by trained staff only.
Storage:	-20 °C

## Handling

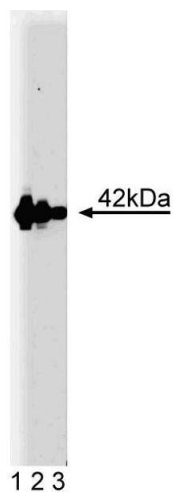
---

Storage Comment: Store undiluted at -20° C.

## Publications

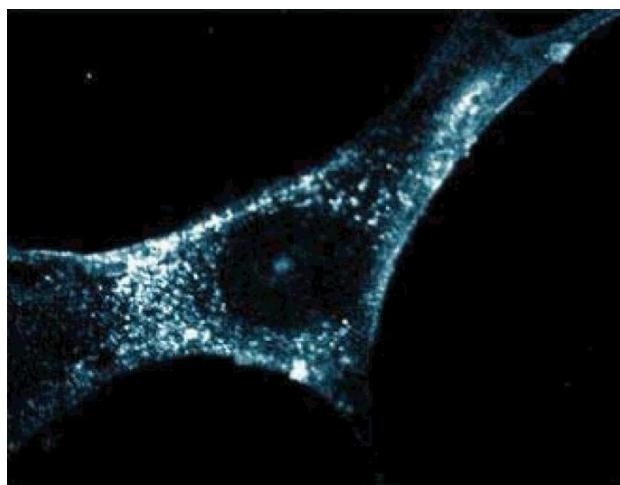
---

- Product cited in: Nebl, Pestonjamas, Leszyk, Crowley, Oh, Luna: "Proteomic analysis of a detergent-resistant membrane skeleton from neutrophil plasma membranes." in: **The Journal of biological chemistry**, Vol. 277, Issue 45, pp. 43399-409, (2002) ([PubMed](#)).
- Salzer, Hinterdorfer, Hunger, Borken, Prohaska: "Ca(++)-dependent vesicle release from erythrocytes involves stomatin-specific lipid rafts, synexin (annexin VII), and sorcin." in: **Blood**, Vol. 99, Issue 7, pp. 2569-77, (2002) ([PubMed](#)).
- Rybin, Xu, Lisanti, Steinberg: "Differential targeting of beta -adrenergic receptor subtypes and adenylyl cyclase to cardiomyocyte caveolae. A mechanism to functionally regulate the cAMP signaling pathway." in: **The Journal of biological chemistry**, Vol. 275, Issue 52, pp. 41447-57, (2001) ([PubMed](#)).
- Stuermer, Lang, Kirsch, Wiechers, Deininger, Plattner: "Glycosylphosphatidyl inositol-anchored proteins and fyn kinase assemble in noncaveolar plasma membrane microdomains defined by reggie-1 and -2." in: **Molecular biology of the cell**, Vol. 12, Issue 10, pp. 3031-45, (2001) ([PubMed](#)).
- Schroeder, Stewart-Galetka, Mandavilli, Parry, Goldsmith, Duvic: "Cloning and characterization of a novel epidermal cell surface antigen (ESA)." in: **The Journal of biological chemistry**, Vol. 269, Issue 31, pp. 19983-91, (1994) ([PubMed](#)).



#### Western Blotting

**Image 1.** Western blot analysis of Flotillin-2 on human endothelial cell lysate. Lane 1: 1:5000, lane 2: 1:10000, lane 3: 1:20000 dilution of anti-Flotillin-2.



#### Immunofluorescence

**Image 2.** Immunofluorescent staining of WI38 cells.