

Datasheet for ABIN967935

**anti-gamma 1 Adaptin antibody (AA 642-821)**

3 Images

5 Publications

[Go to Product page](#)

## Overview

Quantity:	150 µg
Target:	gamma 1 Adaptin (AP1G1)
Binding Specificity:	AA 642-821
Reactivity:	Human, Mouse, Rat, Dog
Host:	Mouse
Clonality:	Monoclonal
Conjugate:	This gamma 1 Adaptin antibody is un-conjugated
Application:	Western Blotting (WB), Immunohistochemistry (IHC), Immunoprecipitation (IP), Immunofluorescence (IF)

## Product Details

Immunogen:	Mouse Adaptin gamma aa. 642-821
Clone:	88-Adaptin gamma
Isotype:	IgG1
Cross-Reactivity:	Rat (Rattus), Human, Dog (Canine)
Characteristics:	<ol style="list-style-type: none"><li>1. Since applications vary, each investigator should titrate the reagent to obtain optimal results.</li><li>2. Please refer to us for technical protocols.</li><li>3. Caution: Sodium azide yields highly toxic hydrazoic acid under acidic conditions. Dilute azide compounds in running water before discarding to avoid accumulation of potentially explosive deposits in plumbing.</li><li>4. Source of all serum proteins is from USDA inspected abattoirs located in the United States.</li></ol>

## Product Details

Purification:	The monoclonal antibody was purified from tissue culture supernatant or ascites by affinity chromatography.
---------------	---

## Target Details

Target:	gamma 1 Adaptin (AP1G1)
Alternative Name:	Adaptin gamma ( <a href="#">AP1G1 Products</a> )
Background:	Sorting of integral membrane proteins at various stages of the endocytic and secretory pathways is mediated by vesicular trafficking between a variety of organelles. Two sorting signals are tyrosine-based and dileucine-based signals that interact with heterotetrameric adaptor protein complexes (AP-1, AP-2, AP-3, and AP-4), which are associated with the vesicle coats. These coatomers contain two large Adaptin proteins (gamma, alpha, delta, or epsilon and beta1, beta2, beta3, or beta4, respectively) that are noncovalently linked to one medium chain ( $\mu$ 1, $\mu$ 2, $\mu$ 3, or $\mu$ 4) and one small chain (sigma1, sigma2, sigma3, or sigma4). The AP-1 and AP-3 complexes are involved in protein sorting from the TGN and endosomes, while AP-2 adaptor complexes are involved in clathrin-mediated endocytosis. Adaptin gamma shows more homology with Adaptin alpha than with Adaptin beta. The conserved regions between Adaptins gamma and alpha could be important for binding to other components of the AP-1 and AP-2 complexes, respectively.
Molecular Weight:	104 kDa

## Application Details

Comment:	Related Products: ABIN968539, ABIN967389
Restrictions:	For Research Use only

## Handling

Format:	Liquid
Concentration:	250 µg/mL
Buffer:	Aqueous buffered solution containing BSA, glycerol, and ≤0.09 % sodium azide.
Preservative:	Sodium azide
Precaution of Use:	This product contains Sodium azide: a POISONOUS AND HAZARDOUS SUBSTANCE which should be handled by trained staff only.

## Handling

---

Storage: -20 °C

Storage Comment: Store undiluted at -20°C.

## Publications

---

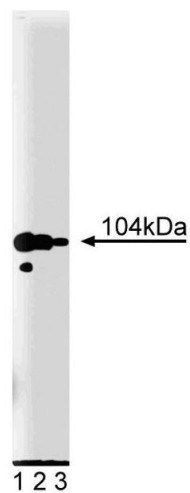
Product cited in: Nagahama, Suzuki, Hamada, Hatsuzawa, Tani, Yamamoto, Tagaya: "SVIP is a novel VCP/p97-interacting protein whose expression causes cell vacuolation." in: **Molecular biology of the cell**, Vol. 14, Issue 1, pp. 262-73, (2003) ([PubMed](#)).

Eskelinen, Illert, Tanaka, Schwarzmann, Blanz, Von Figura, Saftig: "Role of LAMP-2 in lysosome biogenesis and autophagy." in: **Molecular biology of the cell**, Vol. 13, Issue 9, pp. 3355-68, (2002) ([PubMed](#)).

Kalthoff, Groos, Kohl, Mahrhold, Ungewickell: "Clint: a novel clathrin-binding ENTH-domain protein at the Golgi." in: **Molecular biology of the cell**, Vol. 13, Issue 11, pp. 4060-73, (2002) ([PubMed](#)).

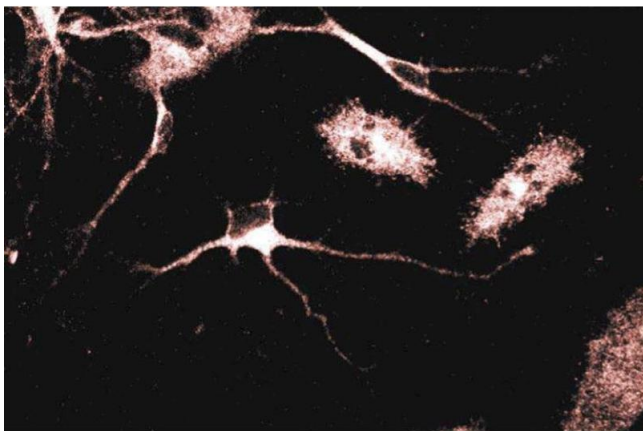
Wasiak, Legendre-Guillemain, Puertollano, Blondeau, Girard, de Heuvel, Boismenu, Bell, Bonifacino, McPherson: "Enthoprotin: a novel clathrin-associated protein identified through subcellular proteomics." in: **The Journal of cell biology**, Vol. 158, Issue 5, pp. 855-62, (2002) ([PubMed](#)).

Robinson: "Cloning and expression of gamma-adaptin, a component of clathrin-coated vesicles associated with the Golgi apparatus." in: **The Journal of cell biology**, Vol. 111, Issue 6 Pt 1, pp. 2319-26, (1991) ([PubMed](#)).



### Western Blotting

**Image 1.** Western blot analysis of Adaptin gamma on PC12 cell lysate. Lane 1: 1:5000, lane 2: 1:10000, lane 3: 1:20000 dilution of anti-Adaptin gamma.



### Immunofluorescence

**Image 2.** Immunofluorescent staining of Rat Neurons with anti-Adaptin gamma antibody.

### Image 3.

