

Datasheet for ABIN967971

anti-CBL antibody (AA 595-810)



[Go to Product page](#)

4 Images

5 Publications

Overview

Quantity:	150 µg
Target:	CBL
Binding Specificity:	AA 595-810
Reactivity:	Human, Mouse, Rat, Chicken, Dog
Host:	Mouse
Clonality:	Monoclonal
Conjugate:	This CBL antibody is un-conjugated
Application:	Western Blotting (WB), Immunohistochemistry (IHC), Immunofluorescence (IF), Immunoprecipitation (IP)

Product Details

Immunogen:	Human c-Cbl aa. 595-810
Clone:	17-c
Isotype:	IgG1
Cross-Reactivity:	Dog (Canine), Rat (Rattus), Mouse (Murine), Chicken
Characteristics:	<ol style="list-style-type: none"> 1. Since applications vary, each investigator should titrate the reagent to obtain optimal results. 2. Please refer to us for technical protocols. 3. Source of all serum proteins is from USDA inspected abattoirs located in the United States. 4. Caution: Sodium azide yields highly toxic hydrazoic acid under acidic conditions. Dilute azide compounds in running water before discarding to avoid accumulation of potentially explosive deposits in plumbing.

Product Details

Purification:	The monoclonal antibody was purified from tissue culture supernatant or ascites by affinity chromatography.
---------------	---

Target Details

Target:	CBL
Alternative Name:	c-Cbl (CBL Products)
Background:	<p>Cbl was identified in the genome of a transforming retrovirus from a mouse pre-B cell lymphoma. The product of mammalian c-cbl, p120[cbl], is a widely expressed cytoplasmic protein with several distinctive domains including a RING finger motif and a large proline-rich domain. Although the normal cellular function of c-Cbl has not yet been determined, it associates with many well known signal transduction proteins. In lymphoid cells, c-Cbl is a substrate of TCR-activated protein tyrosine kinases. In addition, stimulation with EGF, PDGF, FGF, or NGF results in tyrosine-phosphorylation of c-Cbl in lymphoid and other cell types. It forms a signaling complex with Grb2 in T cells and is a SH3 and SH2 binding protein which associates with many other cytoplasmic signaling proteins including Btk, Src, fyn, lck, and the beta isoform of PI-3 kinase. Thus, c-Cbl may be an important adaptor protein in growth factor and T-cell receptor signaling pathways. This antibody is routinely tested by western blot analysis.</p>
Molecular Weight:	120 kDa
Pathways:	TCR Signaling , Interferon-gamma Pathway , EGFR Signaling Pathway , EGFR Downregulation , VEGFR1 Specific Signals

Application Details

Comment:	Related Products: ABIN968537, ABIN967389
Restrictions:	For Research Use only

Handling

Format:	Liquid
Concentration:	250 µg/mL
Buffer:	Aqueous buffered solution containing BSA, glycerol, and ≤0.09 % sodium azide.
Preservative:	Sodium azide

Handling

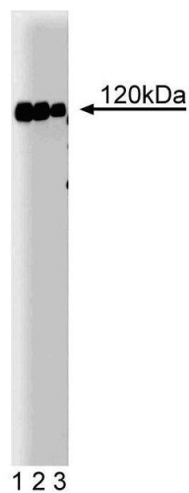
Precaution of Use: This product contains Sodium azide: a POISONOUS AND HAZARDOUS SUBSTANCE which should be handled by trained staff only.

Storage: -20 °C

Storage Comment: Store undiluted at -20°C.

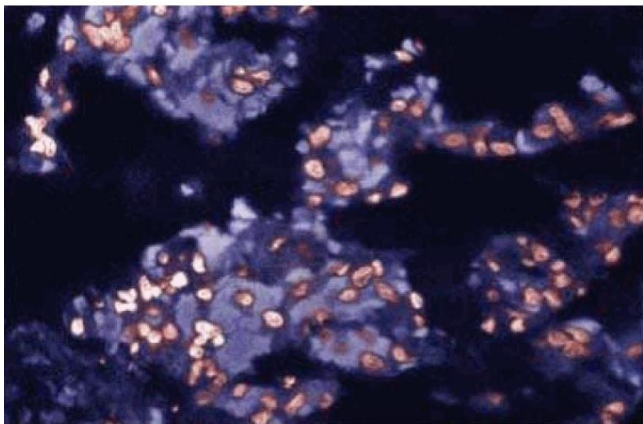
Publications

- Product cited in:
- Jiang, Huang, Marusyk, Sorkin: "Grb2 regulates internalization of EGF receptors through clathrin-coated pits." in: **Molecular biology of the cell**, Vol. 14, Issue 3, pp. 858-70, (2003) ([PubMed](#)).
- Burke, Schooler, Wiley: "Regulation of epidermal growth factor receptor signaling by endocytosis and intracellular trafficking." in: **Molecular biology of the cell**, Vol. 12, Issue 6, pp. 1897-910, (2001) ([PubMed](#)).
- Garcia, Miller: "Single-cell analyses reveal two defects in peptide-specific activation of naive T cells from aged mice." in: **Journal of immunology (Baltimore, Md. : 1950)**, Vol. 166, Issue 5, pp. 3151-7, (2001) ([PubMed](#)).
- Sanjay, Houghton, Neff, DiDomenico, Bardelay, Antoine, Levy, Gailit, Bowtell, Horne, Baron: "Cbl associates with Pyk2 and Src to regulate Src kinase activity, alpha(v)beta(3) integrin-mediated signaling, cell adhesion, and osteoclast motility." in: **The Journal of cell biology**, Vol. 152, Issue 1, pp. 181-95, (2001) ([PubMed](#)).
- Donovan, Wange, Langdon, Samelson: "The protein product of the c-cbl protooncogene is the 120-kDa tyrosine-phosphorylated protein in Jurkat cells activated via the T cell antigen receptor." in: **The Journal of biological chemistry**, Vol. 269, Issue 37, pp. 22921-4, (1994) ([PubMed](#)).



Western Blotting

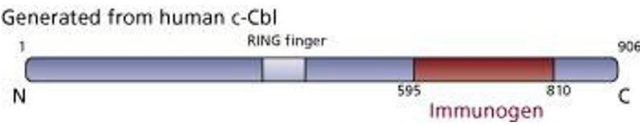
Image 1. Western blot analysis of c-Cbl on Jurkat lysate. Lane 1: 1:5000, lane 2: 1:10000, lane 3: 1:20000 dilution of anti-c-Cbl.



Immunofluorescence

Image 2. Immunofluorescent staining of Rabbit Lung tissue with anti-c-cbl antibody.

Image 3.



Please check the [product details page](#) for more images. Overall 4 images are available for ABIN967971.