

Datasheet for ABIN967992

anti-ITGB1 antibody (AA 76-256)



[Go to Product page](#)

4 Images

5 Publications

Overview

Quantity:	150 µg
Target:	ITGB1
Binding Specificity:	AA 76-256
Reactivity:	Human, Mouse, Rat, Dog, Chicken
Host:	Mouse
Clonality:	Monoclonal
Conjugate:	This ITGB1 antibody is un-conjugated
Application:	Western Blotting (WB), Immunoprecipitation (IP), Immunofluorescence (IF), Immunohistochemistry (Formalin-fixed Sections) (IHC (f))

Product Details

Immunogen:	Human CD29 aa. 76-256
Clone:	18-CD29
Isotype:	IgG1
Cross-Reactivity:	Dog (Canine), Rat (Rattus), Mouse (Murine), Chicken
Characteristics:	<ol style="list-style-type: none"> 1. Since applications vary, each investigator should titrate the reagent to obtain optimal results. 2. Please refer to us for technical protocols. 3. Caution: Sodium azide yields highly toxic hydrazoic acid under acidic conditions. Dilute azide compounds in running water before discarding to avoid accumulation of potentially explosive deposits in plumbing. 4. Source of all serum proteins is from USDA inspected abattoirs located in the United States.

Product Details

Purification:	The monoclonal antibody was purified from tissue culture supernatant or ascites by affinity chromatography.
---------------	---

Target Details

Target:	ITGB1
Alternative Name:	CD29 (ITGB1 Products)
Background:	<p>Integrins are membrane receptors that mediate cell-cell or cell-matrix adhesion. All integrins are transmembrane heterodimers composed of alpha and beta subunits and are connected to the cytoskeleton. At least 20 integrins, formed from combinations of 12 alpha and 9 beta subunits, have been reported. Many of these have been implicated as transducers of molecular signals. The beta1 subgroup of this receptor family comprises at least six different dimer combinations. Among these combinations, alpha2beta1 is associated with type I collagen and laminin binding and regulation, alpha3beta1 is a receptor for laminin and epiligrin, and alpha5beta1 is a fibronectin receptor. beta1 integrins play an important role in several aspects of epidermal differentiation and morphogenesis. Expression of the beta1 subunit is regulated by growth factors such as TGF-beta1. Integrin activation, which enhances binding of T cells to endothelium, is regulated in part by phosphatidylinositol 3-kinase. Focal adhesion kinase (FAK) and paxillin have been reported to independently bind the C-terminal, cytoplasmic domain of the beta1 subunit. FAK is reported to be enzymatically activated upon engagement of integrins with their ligands and paxillin is phosphorylated on tyrosine upon activation of FAK.</p> <p>Synonyms: Integrin beta1, platelet GPIIa, VLA beta-chain</p>
Molecular Weight:	130 kDa
Pathways:	Cell-Cell Junction Organization , Regulation of G-Protein Coupled Receptor Protein Signaling , CXCR4-mediated Signaling Events , Signaling of Hepatocyte Growth Factor Receptor , Integrin Complex , SARS-CoV-2 Protein Interactome

Application Details

Comment:	Related Products: ABIN967389, ABIN968533
Restrictions:	For Research Use only

Handling

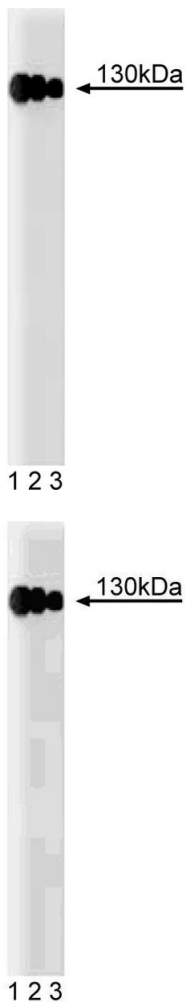
Format:	Liquid
---------	--------

Handling

Concentration:	250 µg/mL
Buffer:	Aqueous buffered solution containing BSA, glycerol, and ≤0.09 % sodium azide.
Preservative:	Sodium azide
Precaution of Use:	This product contains Sodium azide: a POISONOUS AND HAZARDOUS SUBSTANCE which should be handled by trained staff only.
Storage:	-20 °C
Storage Comment:	Store undiluted at -20° C.

Publications

Product cited in:	<p>Ivaska, Whelan, Watson, Parker: "PKC epsilon controls the traffic of beta1 integrins in motile cells." in: The EMBO journal, Vol. 21, Issue 14, pp. 3608-19, (2002) (PubMed).</p> <p>Tang, Hao, Fitzgerald, Sasaki, Landon, Inagami: "Pyk2/CAKbeta tyrosine kinase activity-mediated angiogenesis of pulmonary vascular endothelial cells." in: The Journal of biological chemistry, Vol. 277, Issue 7, pp. 5441-7, (2002) (PubMed).</p> <p>Huan, van Adelsberg: "Polycystin-1, the PKD1 gene product, is in a complex containing E-cadherin and the catenins." in: The Journal of clinical investigation, Vol. 104, Issue 10, pp. 1459-68, (1999) (PubMed).</p> <p>Yeh, Peng, Huang: "Accutin, a new disintegrin, inhibits angiogenesis in vitro and in vivo by acting as integrin alphavbeta3 antagonist and inducing apoptosis." in: Blood, Vol. 92, Issue 9, pp. 3268-76, (1998) (PubMed).</p> <p>Cervella, Silengo, Pastore, Altruda: "Human beta 1-integrin gene expression is regulated by two promoter regions." in: The Journal of biological chemistry, Vol. 268, Issue 7, pp. 5148-55, (1993) (PubMed).</p>
-------------------	--

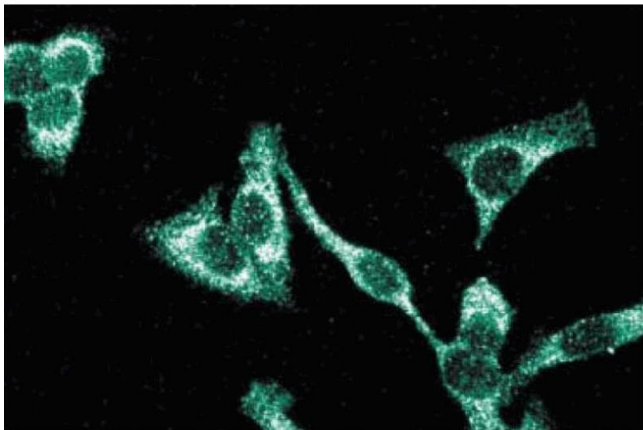


Western Blotting

Image 1.

Western Blotting

Image 2. Western blot analysis of CD29 (Integrin beta1) on a A431 cell lysate (Human epithelial carcinoma, ATCC CRL-1555). Lane 1: 1:2500, lane 2: 1:5000, lane 3: 1: 10,000 diluton of the anti-CD29 antibody.



Immunofluorescence

Image 3. Immunofluorescence staining of HeLa cells (Human cervical epitheloid carcinoma, ATCC CCL-2.2).

Please check the [product details page](#) for more images. Overall 4 images are available for ABIN967992.