



[Go to Product page](#)

Datasheet for ABIN968022

## anti-ANKS1B antibody (AA 107-268)

4 Images

5 Publications

### Overview

Quantity:	150 µg
Target:	ANKS1B
Binding Specificity:	AA 107-268
Reactivity:	Human, Mouse, Rat, Chicken
Host:	Mouse
Clonality:	Monoclonal
Conjugate:	This ANKS1B antibody is un-conjugated
Application:	Western Blotting (WB), Immunoprecipitation (IP), Immunohistochemistry (Paraffin-embedded Sections) (IHC (p)), Immunofluorescence (IF)

### Product Details

Immunogen:	Human EB1 aa. 107-268
Clone:	5-EB1
Isotype:	IgG1
Cross-Reactivity:	Chicken, Mouse (MURINE), Rat (Rattus)
Characteristics:	<ol style="list-style-type: none"><li>1. Since applications vary, each investigator should titrate the reagent to obtain optimal results.</li><li>2. Please refer to us for technical protocols.</li><li>3. Caution: Sodium azide yields highly toxic hydrazoic acid under acidic conditions. Dilute azide compounds in running water before discarding to avoid accumulation of potentially explosive deposits in plumbing.</li><li>4. Source of all serum proteins is from USDA inspected abattoirs located in the United States.</li></ol>

## Product Details

---

**Purification:** The monoclonal antibody was purified from tissue culture supernatant or ascites by affinity chromatography.

## Target Details

---

**Target:** ANKS1B

**Alternative Name:** EB1 ([ANKS1B Products](#))

**Background:** Familial adenomatous polyposis is an autosomal inherited disease characterized by mutations in the APC (adenomatous polyposis coli) gene. Individuals with this disease are predisposed to colorectal polyps and cancer. It has been proposed that disruption of the APC gene plays a role in the disease. APC is a large coiled-coil protein that interacts, via its carboxy terminus, with catenins and with the protein, EB1. This 30 kDa protein was discovered as a result of its strong binding to the C-terminal domain of APC. Like the APC-binding proteins beta-Catenin and pp120Cas, EB1 may play an essential role in modulating APC activity and tumorigenesis. This antibody is routinely tested by western blot analysis.

**Molecular Weight:** 30 kDa

## Application Details

---

**Comment:** Related Products: [ABIN968536](#), [ABIN967389](#)

**Restrictions:** For Research Use only

## Handling

---

**Format:** Liquid

**Concentration:** 250 µg/mL

**Buffer:** Aqueous buffered solution containing BSA, glycerol, and ≤0.09 % sodium azide.

**Preservative:** Sodium azide

**Precaution of Use:** This product contains Sodium azide: a POISONOUS AND HAZARDOUS SUBSTANCE which should be handled by trained staff only.

**Storage:** -20 °C

**Storage Comment:** Store undiluted at -20°C.

## Publications

---

Product cited in:

Etienne-Manneville, Hall: "Cdc42 regulates GSK-3beta and adenomatous polyposis coli to control cell polarity." in: **Nature**, Vol. 421, Issue 6924, pp. 753-6, (2003) ([PubMed](#)).

Askham, Vaughan, Goodson, Morrison: "Evidence that an interaction between EB1 and p150(Glued) is required for the formation and maintenance of a radial microtubule array anchored at the centrosome." in: **Molecular biology of the cell**, Vol. 13, Issue 10, pp. 3627-45, (2002) ([PubMed](#)).

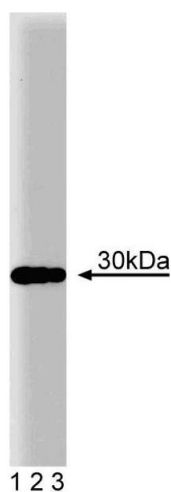
Komarova, Akhmanova, Kojima, Galjart, Borisy: "Cytoplasmic linker proteins promote microtubule rescue in vivo." in: **The Journal of cell biology**, Vol. 159, Issue 4, pp. 589-99, (2002) ([PubMed](#)).

Mamane, Grandvaux, Hernandez, Sharma, Innocente, Lee, Azimi, Lin, Hiscott: "Repression of IRF-4 target genes in human T cell leukemia virus-1 infection." in: **Oncogene**, Vol. 21, Issue 44, pp. 6751-65, (2002) ([PubMed](#)).

Su, Huang, Fair, Powell, Heston: "Alternatively spliced variants of prostate-specific membrane antigen RNA: ratio of expression as a potential measurement of progression." in: **Cancer research**, Vol. 55, Issue 7, pp. 1441-3, (1995) ([PubMed](#)).

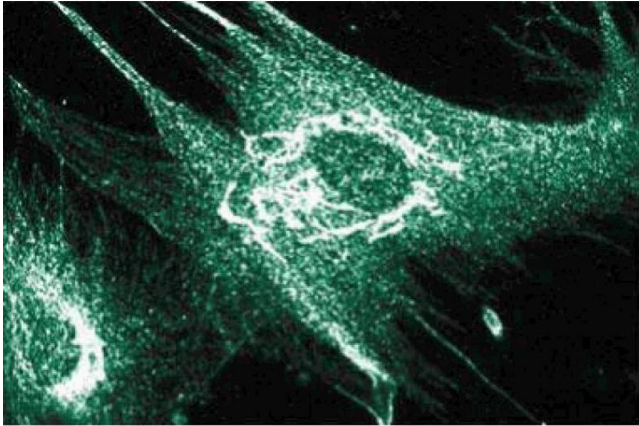
## Images

---



### Western Blotting

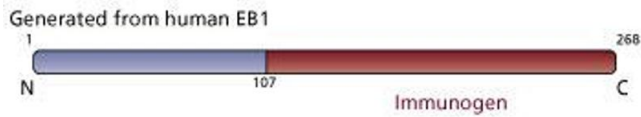
**Image 1.** Western blot analysis of EB1 on a human endothelial cell lysate. Lane 1: 1:500, lane 2: 1:1000, lane 3: 1:2000 dilution of the anti- EB1 antibody.



### Immunofluorescence

**Image 2.** Immunofluorescence staining of human intestinal smooth muscle cells (HISM).

**Image 3.**



Please check the [product details page](#) for more images. Overall 4 images are available for ABIN968022.