

Datasheet for ABIN968080

anti-Syntaxin 6 antibody (AA 6-136)

4 Images

4 Publications



[Go to Product page](#)

Overview

Quantity:	150 µg
Target:	Syntaxin 6 (STX6)
Binding Specificity:	AA 6-136
Reactivity:	Human, Mouse, Chicken, Rat, Dog, Frog
Host:	Mouse
Clonality:	Monoclonal
Conjugate:	This Syntaxin 6 antibody is un-conjugated
Application:	Western Blotting (WB), Immunohistochemistry (IHC), Immunofluorescence (IF), Immunoprecipitation (IP)

Product Details

Immunogen:	Rat Syntaxin 6 aa. 6-136
Clone:	30-Syntaxin 6
Isotype:	IgG1
Cross-Reactivity:	Human, Mouse (Murine), Dog (Canine), Chicken, Frog
Characteristics:	<ol style="list-style-type: none"> 1. Since applications vary, each investigator should titrate the reagent to obtain optimal results. 2. Please refer to us for technical protocols. 3. Caution: Sodium azide yields highly toxic hydrazoic acid under acidic conditions. Dilute azide compounds in running water before discarding to avoid accumulation of potentially explosive deposits in plumbing. 4. Source of all serum proteins is from USDA inspected abattoirs located in the United States.

Product Details

Purification:	The monoclonal antibody was purified from tissue culture supernatant or ascites by affinity chromatography.
---------------	-------------------------------------------------------------------------------------------------------------

Target Details

Target:	Syntaxin 6 (STX6)
Alternative Name:	Syntaxin 6 (STX6 Products)
Background:	<p>Signal transmission between cells is often regulated by the secretion of neurotransmitters or hormones into the extracellular space. This process is controlled by a complex pathway of membrane trafficking which leads to membrane fusion and secretion. Syntaxin 1 is involved in three important complexes that modulate the secretion process: syntaxin and n-sec-1, syntaxin, VAMP, and SNAP-25, and syntaxin, VAMP, SNAP-25, alphaSNAP, and NSF (20S complex).</p> <p>Syntaxin 6 is a 255 amino acid member of the syntaxin family. It contains a C-terminal transmembrane domain and is located at the Golgi apparatus. In addition, Syntaxin 6 displays significant (47% identity) homology with SNAP-25. In vitro, Syntaxin 6 has been reported to interact with alpha-SNAP. Syntaxin 6 has been reported to have a calculated molecular weight of 30.6 kDa, but has been observed to migrate in a range inbetween ~ 31-35 kDa.</p>
Molecular Weight:	31-35 kDa
Pathways:	Synaptic Vesicle Exocytosis

Application Details

Comment:	Related Products: ABIN968533, ABIN967389
Restrictions:	For Research Use only

Handling

Format:	Liquid
Concentration:	250 µg/mL
Buffer:	Aqueous buffered solution containing BSA, glycerol, and ≤0.09 % sodium azide.
Preservative:	Sodium azide
Precaution of Use:	This product contains Sodium azide: a POISONOUS AND HAZARDOUS SUBSTANCE which should be handled by trained staff only.
Storage:	-20 °C

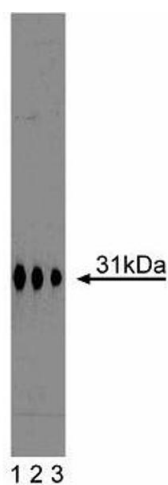
Handling

Storage Comment: Store undiluted at -20°C.

Publications

- Product cited in:
- Shewan, van Dam, Martin, Luen, Hong, Bryant, James: "GLUT4 recycles via a trans-Golgi network (TGN) subdomain enriched in Syntaxins 6 and 16 but not TGN38: involvement of an acidic targeting motif." in: **Molecular biology of the cell**, Vol. 14, Issue 3, pp. 973-86, (2003) ([PubMed](#)).
- Mullock, Smith, Ihrke, Bright, Lindsay, Parkinson, Brooks, Parton, James, Luzio, Piper: "Syntaxin 7 is localized to late endosome compartments, associates with Vamp 8, and is required for late endosome-lysosome fusion." in: **Molecular biology of the cell**, Vol. 11, Issue 9, pp. 3137-53, (2000) ([PubMed](#)).
- Ramalho-Santos, Moreno, Sutovsky, Chan, Hewitson, Wessel, Simerly, Schatten: "SNAREs in mammalian sperm: possible implications for fertilization." in: **Developmental biology**, Vol. 223, Issue 1, pp. 54-69, (2000) ([PubMed](#)).
- Bock, Lin, Scheller: "A new syntaxin family member implicated in targeting of intracellular transport vesicles." in: **The Journal of biological chemistry**, Vol. 271, Issue 30, pp. 17961-5, (1996) ([PubMed](#)).

Images



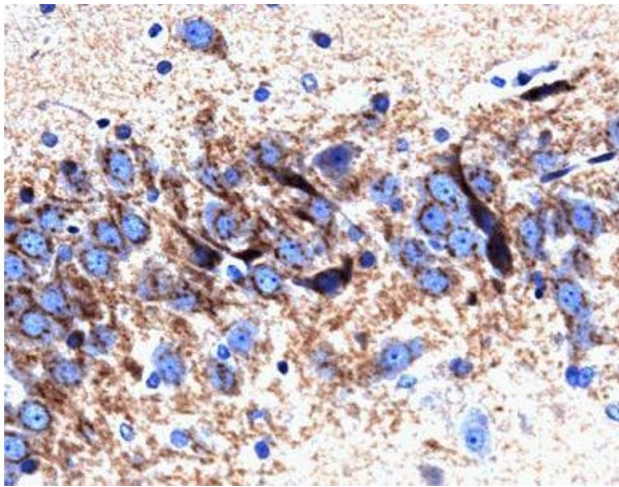
Western Blotting

Image 1. Western blot analysis of Syntaxin 6 on a A431 cell lysate (Human epithelial carcinoma, ATCC CRL-1555). Lane 1: 1:500, lane 2: 1:1000, lane 3: 1:2000 dilution of the mouse anti-Syntaxin 6 antibody.



Immunofluorescence

Image 2. Immunofluorescence staining of PSFK-1 cells (Human neuroectodermal tumor line, ATCC CRL-2060).



Immunohistochemistry (Paraffin-embedded Sections)

Image 3. Immunohistochemical staining on a rat brain section for Syntaxin 6. A formalin-fixed paraffin-embedded section with citrate buffer pretreatment (40X magnification).

Please check the [product details page](#) for more images. Overall 4 images are available for ABIN968080.