

Datasheet for ABIN968193  
**anti-TFCP2 antibody (AA 205-414)**[Go to Product page](#)

4 Images

2 Publications

## Overview

Quantity:	50 µg
Target:	TFCP2
Binding Specificity:	AA 205-414
Reactivity:	Human, Mouse, Rat, Dog
Host:	Mouse
Clonality:	Monoclonal
Conjugate:	This TFCP2 antibody is un-conjugated
Application:	Western Blotting (WB), Immunofluorescence (IF)

## Product Details

Immunogen:	Human LSF aa. 205-414
Clone:	14-LSF
Isotype:	IgG1
Cross-Reactivity:	Mouse (Murine), Rat (Rattus), Dog (Canine)
Characteristics:	<ol style="list-style-type: none"><li>1. Since applications vary, each investigator should titrate the reagent to obtain optimal results.</li><li>2. Please refer to us for technical protocols.</li><li>3. Source of all serum proteins is from USDA inspected abattoirs located in the United States.</li><li>4. Caution: Sodium azide yields highly toxic hydrazoic acid under acidic conditions. Dilute azide compounds in running water before discarding to avoid accumulation of potentially explosive deposits in plumbing.</li></ol>
Purification:	The monoclonal antibody was purified from tissue culture supernatant or ascites by affinity

## Product Details

chromatography.

## Target Details

Target:	TFCP2
Alternative Name:	LSF ( <a href="#">TFCP2 Products</a> )
Background:	<p>LSF (alphaCP2 or LBP-1c) is a transcription factor originally identified by its binding to, and induction of, the SV40 late promoter. LSF displays some similarity to the Elf-1/NTF transcription factors of Drosophila. It is primarily found in its dimeric form in solution, however it is the tetrameric form that recognizes a center-to-center 10 bp repeat. LSF-1D (LBP-1d) is the product of an alternative splicing event, resulting in a deletion of a 51 amino acid segment that corresponds with the DNA-binding region of LSF. LSF-1D is found in the cytoplasm, not in the nucleus, and can interact with LSF to form a heterotetramer that can interfere with LSF DNA binding. In mitogen-stimulated human peripheral T cells, LSF is phosphorylated on amino acid 291, which increases its DNA binding activity. Thus, LSF-mediated gene transcription is regulated by its phosphorylation and/or its interaction with LSF-1D during cell growth. This antibody is routinely tested by western blot analysis.</p> <p>Synonyms: alphaCP2, LBP-1c</p>
Molecular Weight:	63 kDa

## Application Details

Comment:	Related Products: <a href="#">ABIN968551</a> , <a href="#">ABIN967389</a>
Restrictions:	For Research Use only

## Handling

Format:	Liquid
Concentration:	250 µg/mL
Buffer:	Aqueous buffered solution containing BSA, glycerol, and ≤0.09 % sodium azide.
Preservative:	Sodium azide
Precaution of Use:	This product contains Sodium azide: a POISONOUS AND HAZARDOUS SUBSTANCE which should be handled by trained staff only.
Storage:	-20 °C

## Handling

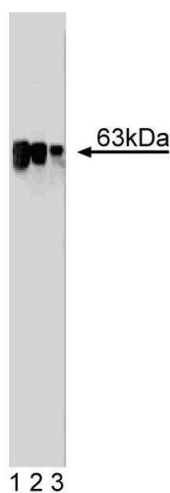
Storage Comment: Store undiluted at -20° C.

## Publications

Product cited in: Volker, Rameh, Zhu, DeCaprio, Hansen: "Mitogenic stimulation of resting T cells causes rapid phosphorylation of the transcription factor LSF and increased DNA-binding activity." in: **Genes & development**, Vol. 11, Issue 11, pp. 1435-46, (1997) ([PubMed](#)).

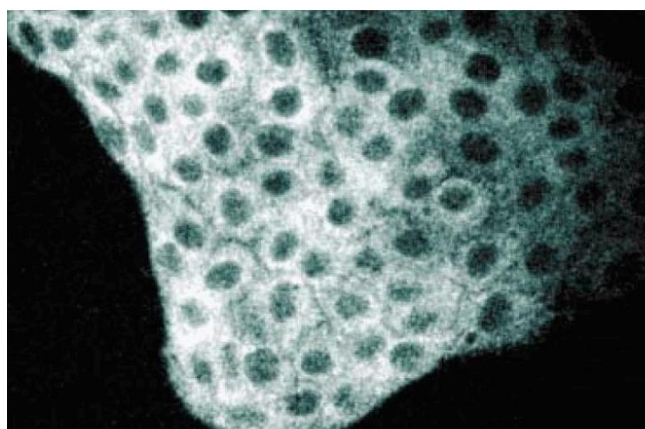
Shirra, Zhu, Huang, Pallas, Hansen: "One exon of the human LSF gene includes conserved regions involved in novel DNA-binding and dimerization motifs." in: **Molecular and cellular biology**, Vol. 14, Issue 8, pp. 5076-87, (1994) ([PubMed](#)).

## Images



### Western Blotting

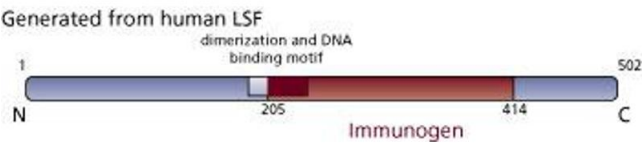
**Image 1.** Western blot analysis of LSF on a HCT-8 cell lysate (Human colorectal adenocarcinoma, ATCC CCL-244). Lane 1: 1:500, lane 2: 1:1000, lane 3: 1:2000 dilution of the mouse anti- LSF antibody.



### Immunofluorescence

**Image 2.** Immunofluorescence staining of MDCK cells (Canine kidney, ATCC CCL-34).

Image 3.



Please check the [product details page](#) for more images. Overall 4 images are available for ABIN968193.