



[Go to Product page](#)

Datasheet for ABIN968215

anti-UBE2L3 antibody (AA 15-133)

2 Images

2 Publications

Overview

Quantity:	50 µg
Target:	UBE2L3
Binding Specificity:	AA 15-133
Reactivity:	Human, Mouse, Rat, Dog, Frog
Host:	Mouse
Clonality:	Monoclonal
Conjugate:	This UBE2L3 antibody is un-conjugated
Application:	Western Blotting (WB), Immunohistochemistry (IHC), Immunofluorescence (IF), Immunoprecipitation (IP)

Product Details

Immunogen:	Human Ubch7 aa. 15-133
Clone:	20-Ubch7
Isotype:	IgG1
Cross-Reactivity:	Mouse (Murine), Rat (Rattus), Dog (Canine), Frog
Characteristics:	<ol style="list-style-type: none">1. Since applications vary, each investigator should titrate the reagent to obtain optimal results.2. Please refer to us for technical protocols.3. Source of all serum proteins is from USDA inspected abattoirs located in the United States.4. Caution: Sodium azide yields highly toxic hydrazoic acid under acidic conditions. Dilute azide compounds in running water before discarding to avoid accumulation of potentially explosive deposits in plumbing.

Product Details

Purification: The monoclonal antibody was purified from tissue culture supernatant or ascites by affinity chromatography.

Target Details

Target: UBE2L3

Alternative Name: UbcH7 ([UBE2L3 Products](#))

Background: Progression of the mammalian cell cycle is regulated mainly by phosphorylation/dephosphorylation and synthesis/degradation of many key proteins. Ubiquitin, a soluble protein of 76 amino acids, is enzymatically attached to an epsilon-NH₂-Lys in a target protein. Ubiquitination is a hallmark for rapid protein degradation of the target protein in the proteasome—a cytoplasmic complex of proteases. Several human homologs of the yeast ubiquitin-conjugating enzymes (Ubc) have been identified and found involved in critical processes such as cell cycle progression and apoptosis. UbcH7 was characterized as an E6-AP-interacting protein required for the ubiquitination of p53. E6-AP is the ubiquitin ligase used as bait in the search for interacting proteins required for the proper ubiquitination of cellular targets. UbcH7 interacts with the C-terminal region of E6-AP named the hect domain. Therefore, UbcH7 is another protein, like Ubc9, involved in the degradation and regulation of critical proteins in the cell cycle. This antibody is routinely tested by western blot analysis.

Synonyms: Ubiquitin Conjugating Enzyme H7

Molecular Weight: 17-18 kDa

Application Details

Comment: Related Products: ABIN968537, ABIN967389

Restrictions: For Research Use only

Handling

Format: Liquid

Concentration: 250 µg/mL

Buffer: Aqueous buffered solution containing BSA, glycerol, and ≤0.09 % sodium azide.

Preservative: Sodium azide

Precaution of Use: This product contains Sodium azide: a POISONOUS AND HAZARDOUS SUBSTANCE which should be handled by trained staff only.

Handling

Storage: -20 °C

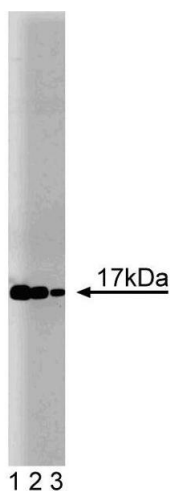
Storage Comment: Store undiluted at -20° C.

Publications

Product cited in: Hagglund, Van Sant, Lopez, Roizman: "Herpes simplex virus 1-infected cell protein 0 contains two E3 ubiquitin ligase sites specific for different E2 ubiquitin-conjugating enzymes." in: **Proceedings of the National Academy of Sciences of the United States of America**, Vol. 99, Issue 2, pp. 631-6, (2002) ([PubMed](#)).

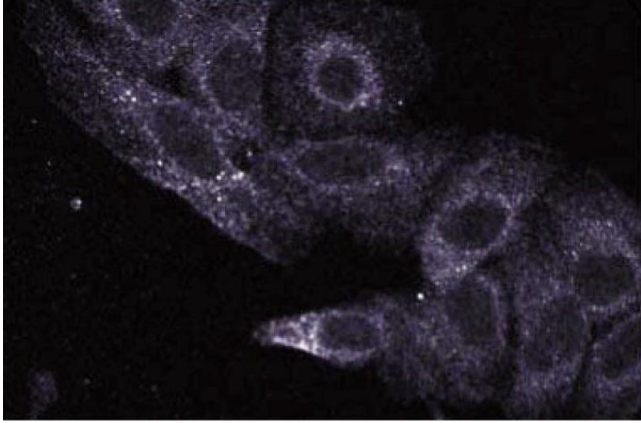
Shimura, Schlossmacher, Hattori, Frosch, Trockenbacher, Schneider, Mizuno, Kosik, Selkoe: " Ubiquitination of a new form of alpha-synuclein by parkin from human brain: implications for Parkinson's disease." in: **Science (New York, N.Y.)**, Vol. 293, Issue 5528, pp. 263-9, (2001) ([PubMed](#)).

Images



Western Blotting

Image 1. Western blot analysis of UbcH7 on a Jurkat cell lysate (Human T-cell leukemia, ATCC TIB-152). Lane 1: 1:250, lane 2: 1:500, lane 3: 1:1000 dilution of the mouse anti-UbcH7 antibody.



Immunofluorescence

Image 2. Immunofluorescence staining of HeLa cells (Human cervical epitheloid carcinoma, ATCC CCL-2.2).