



[Go to Product page](#)

Datasheet for ABIN968219

anti-PAX5 antibody (AA 151-306)

3 Images

4 Publications

Overview

Quantity:	50 µg
Target:	PAX5
Binding Specificity:	AA 151-306
Reactivity:	Human, Mouse
Host:	Mouse
Clonality:	Monoclonal
Conjugate:	This PAX5 antibody is un-conjugated
Application:	Western Blotting (WB), Immunohistochemistry (IHC), Immunofluorescence (IF), Immunoprecipitation (IP)

Product Details

Immunogen:	Human Pax-5 aa. 151-306
Clone:	24-Pax
Isotype:	IgG1
Cross-Reactivity:	Mouse (Murine)
Characteristics:	<ol style="list-style-type: none">1. Since applications vary, each investigator should titrate the reagent to obtain optimal results.2. Please refer to us for technical protocols.3. Caution: Sodium azide yields highly toxic hydrazoic acid under acidic conditions. Dilute azide compounds in running water before discarding to avoid accumulation of potentially explosive deposits in plumbing.4. Source of all serum proteins is from USDA inspected abattoirs located in the United States.

Product Details

Purification: The monoclonal antibody was purified from tissue culture supernatant or ascites by affinity chromatography.

Target Details

Target: PAX5

Alternative Name: Pax-5 ([PAX5 Products](#))

Background: There are at least nine members of the paired box (Pax) gene family whose protein products are transcription factors involved in development. The conserved paired box DNA-binding domain is found in the N-terminal region of Pax proteins. An octamer and homeodomain sequence are conserved in the center of the proteins. The Ser/Thr/Pro-rich region in the C-terminal portion contains a conserved 100 amino acid transactivating domain. One of the best studied Pax family members, Pax 5, is a B cell specific activator protein (BSAP). In the early stages of B cell development, Pax-5 influences the expression of several B-cell-specific genes, such as CD19 and CD20. Pax-5 is expressed primarily in pro-, pre-, and mature B cells, but not in plasma cells. Interestingly, Pax-5 mRNA is transiently detected in the mesencephalon and spinal cord during embryogenesis. Expression then shifts to the fetal liver and correlates with the onset of B lymphopoiesis. Pax-5 has been found to be important in both B cell and nervous system development. This antibody is routinely tested by western blot analysis.

Molecular Weight: 50 kDa

Application Details

Comment: Related Products: ABIN968544, ABIN967389

Restrictions: For Research Use only

Handling

Format: Liquid

Concentration: 250 µg/mL

Buffer: Aqueous buffered solution containing BSA, glycerol, and ≤0.09 % sodium azide.

Preservative: Sodium azide

Precaution of Use: This product contains Sodium azide: a POISONOUS AND HAZARDOUS SUBSTANCE which should be handled by trained staff only.

Handling

Storage: -20 °C

Storage Comment: Store undiluted at -20° C.

Publications

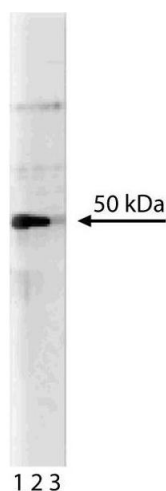
Product cited in: Klein, Tu, Stolovitzky, Keller, Haddad, Miljkovic, Cattoretti, Califano, Dalla-Favera: "Transcriptional analysis of the B cell germinal center reaction." in: **Proceedings of the National Academy of Sciences of the United States of America**, Vol. 100, Issue 5, pp. 2639-44, (2003) ([PubMed](#)).

Hertel, Zhou, Hamilton-Dutoit, Junker: "Loss of B cell identity correlates with loss of B cell-specific transcription factors in Hodgkin/Reed-Sternberg cells of classical Hodgkin lymphoma." in: **Oncogene**, Vol. 21, Issue 32, pp. 4908-20, (2002) ([PubMed](#)).

Foss, Reusch, Demel, Lenz, Anagnostopoulos, Hummel, Stein: "Frequent expression of the B-cell-specific activator protein in Reed-Sternberg cells of classical Hodgkin's disease provides further evidence for its B-cell origin." in: **Blood**, Vol. 94, Issue 9, pp. 3108-13, (1999) ([PubMed](#)).

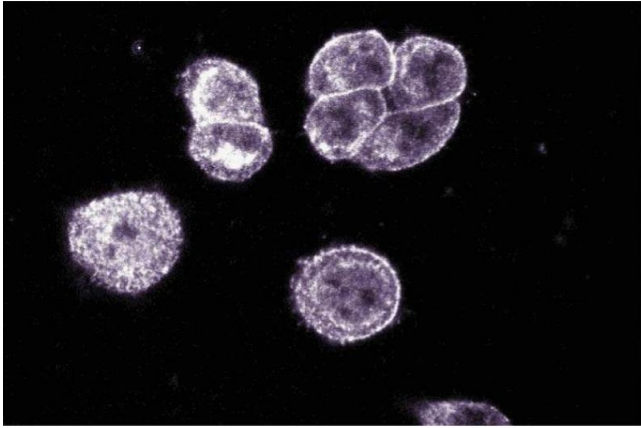
Zwollo, Arrieta, Ede, Molinder, Desiderio, Pollock: "The Pax-5 gene is alternatively spliced during B-cell development." in: **The Journal of biological chemistry**, Vol. 272, Issue 15, pp. 10160-8, (1997) ([PubMed](#)).

Images



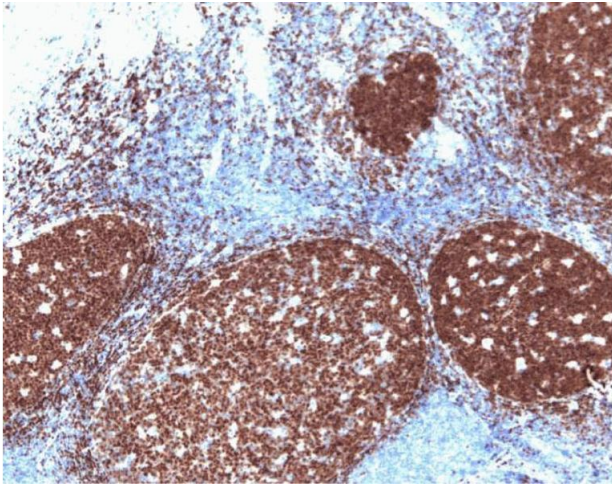
Western Blotting

Image 1. Western blot analysis of Pax-5 on mouse spleen. Lane 1: 1:250, lane 2: 1:500, lane 3: 1:1000 dilution of anti-Pax-5 antibody.



Immunofluorescence

Image 2. Immunofluorescent staining on SW-13 cells.



Immunohistochemistry (Paraffin-embedded Sections)

Image 3. Pax-5 (clone 24) staining on human tonsil. Formalin fixed paraffin section with citrate buffer pretreatment 10X.