



[Go to Product page](#)

Datasheet for ABIN968373

anti-CD38 antibody (AA 171-292)

4 Images

2 Publications

Overview

Quantity:	50 µg
Target:	CD38
Binding Specificity:	AA 171-292
Reactivity:	Human
Host:	Mouse
Clonality:	Monoclonal
Conjugate:	This CD38 antibody is un-conjugated
Application:	Western Blotting (WB), Immunofluorescence (IF)

Product Details

Immunogen:	Human CD38 aa. 171-292
Clone:	22-CD38
Isotype:	IgG1
Characteristics:	<ol style="list-style-type: none">1. Since applications vary, each investigator should titrate the reagent to obtain optimal results.2. Please refer to us for technical protocols.3. Caution: Sodium azide yields highly toxic hydrazoic acid under acidic conditions. Dilute azide compounds in running water before discarding to avoid accumulation of potentially explosive deposits in plumbing.4. Source of all serum proteins is from USDA inspected abattoirs located in the United States.
Purification:	The monoclonal antibody was purified from tissue culture supernatant or ascites by affinity chromatography.

Target Details

Target: CD38

Abstract: [CD38 Products](#)

Background: Lymphocyte trafficking is essential for efficient immune responses in that it allows antigen sensitive lymphocytes to encounter antigen and be recruited to sites of infection. Trafficking involves the passage of lymphocytes across the HEV, a process that is mediated by selectins. CD38 is a single-chain type II transmembrane glycoprotein that is expressed by a variety of immature and activated lymphocytes. It mediates a selectin-like binding to endothelial cells, thus functioning as an adhesion molecule. Human and mouse forms of the protein are highly similar and homologous to the *Aplysia californica* ADP-ribosyl-cyclase. CD38 catalyzes the synthesis of cyclic ADP-ribose (cADPR), a putative endogenous regulator of calcium release. This is thought to be key to CD38-mediated signal transduction. A possible ligand for CD38 is the Ig superfamily protein CD31. In addition, activation of CD38 with a monoclonal antibody induces leukemic cell proliferation. Thus, CD38 is a cell surface protein that is important for lymphocyte migration and may be involved in the propagation of leukemic cells in AML (acute myelogenous leukemia).

Molecular Weight: 46 kDa

Application Details

Comment: Related Products: [ABIN967389](#), [ABIN968584](#)

Restrictions: For Research Use only

Handling

Format: Liquid

Concentration: 250 µg/mL

Buffer: Aqueous buffered solution containing BSA, glycerol, and ≤0.09 % sodium azide.

Preservative: Sodium azide

Precaution of Use: This product contains Sodium azide: a POISONOUS AND HAZARDOUS SUBSTANCE which should be handled by trained staff only.

Storage: -20 °C

Storage Comment: Store undiluted at -20°C.

Publications

Product cited in:

Deaglio, Morra, Mallone, Ausiello, Prager, Garbarino, Dianzani, Stockinger, Malavasi: "Human CD38 (ADP-ribosyl cyclase) is a counter-receptor of CD31, an Ig superfamily member." in: **Journal of immunology (Baltimore, Md. : 1950)**, Vol. 160, Issue 1, pp. 395-402, (1998) ([PubMed](#)).

Konopleva, Estrov, Zhao, Andreeff, Mehta: "Ligation of cell surface CD38 protein with agonistic monoclonal antibody induces a cell growth signal in myeloid leukemia cells." in: **Journal of immunology (Baltimore, Md. : 1950)**, Vol. 161, Issue 9, pp. 4702-8, (1998) ([PubMed](#)).

Images

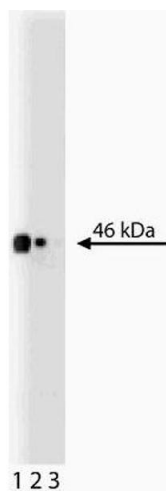
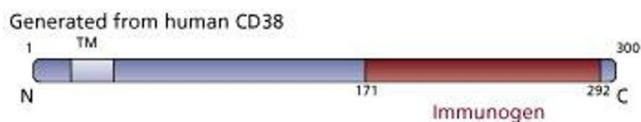
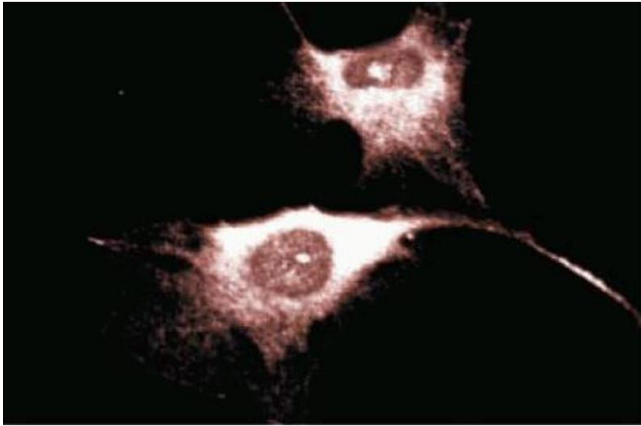


Image 2. Western blot analysis of CD38 on EB1 lysate. Lane 1: 1:250, lane 2: 1:500, lane 3: 1:1000 dilution of CD38.



Immunofluorescence

Image 3. Immunofluorescence staining of Human Endothelial cells.

Please check the [product details page](#) for more images. Overall 4 images are available for ABIN968373.