

Datasheet for ABIN968464
anti-IKBKG antibody (AA 278-396)[4 Images](#)[5 Publications](#)[Go to Product page](#)

Overview

Quantity:	50 µg
Target:	IKBKG
Binding Specificity:	AA 278-396
Reactivity:	Human, Rat, Dog
Host:	Mouse
Clonality:	Monoclonal
Conjugate:	This IKBKG antibody is un-conjugated
Application:	Western Blotting (WB), Immunofluorescence (IF)

Product Details

Immunogen:	Mouse IKKgammma/NEMO aa. 278-396
Clone:	54-IKKgammma-NEMO
Isotype:	IgG1
Cross-Reactivity:	Rat (Rattus), Human, Dog (Canine)
Characteristics:	<ol style="list-style-type: none">1. Since applications vary, each investigator should titrate the reagent to obtain optimal results.2. Please refer to us for technical protocols.3. Caution: Sodium azide yields highly toxic hydrazoic acid under acidic conditions. Dilute azide compounds in running water before discarding to avoid accumulation of potentially explosive deposits in plumbing.4. Source of all serum proteins is from USDA inspected abattoirs located in the United States.
Purification:	The monoclonal antibody was purified from tissue culture supernatant or ascites by affinity

Product Details

chromatography.

Target Details

Target:	IKBKG
Alternative Name:	IKK gamma (IKBKG Products)
Background:	<p>In most cells, NF-kappaB is sequestered in an inactive cytoplasmic form via interactions with the inhibitory proteins IkappaBalpha, IkappaBbeta, and IkappaBepsilon. Cell stimulation induces the release, activation, and nuclear translocation of NF-kappaB. Release of NF-kappaB results from the phosphorylation and subsequent proteolytic degradation of the IkappaB proteins. Two cytokine-inducible IkappaB kinases (IKKalpha and IKKbeta) phosphorylate and target the IkappaB proteins for degradation by the ubiquitin pathway. These kinases are components of a 700-900 kDa multisubunit complex that also contains NF-kappaB/RelA, IkappaBalpha, MEKK1, NIK, IKAP, and IKKgamma/NEMO (NF-kappaB essential modulator). IKKgamma contains two coiled-coil domains and a leucine zipper which allow it to form dimers and trimers that interact directly with IKKbeta. IKKgamma, essential for IKKalpha/IKKbeta activation of NF-kappaB, is located functionally and physically upstream of these subunits. In addition, IKKgamma enables the HTLV-1 Tax oncoprotein to interact with IKKbeta, resulting in constitutive activation of NF-kappaB and maintenance of cellular transformation. Thus, IKKgamma is an essential element of the IkappaB complex and an adaptor that mediates stable formation of Tax-IKK complexes.</p> <p>Synonyms: NEMO</p>
Molecular Weight:	48 kDa
Pathways:	NF-kappaB Signaling , RTK Signaling , TCR Signaling , TLR Signaling , Fc-epsilon Receptor Signaling Pathway , Activation of Innate immune Response , M Phase , Production of Molecular Mediator of Immune Response , Hepatitis C , Protein targeting to Nucleus , Toll-Like Receptors Cascades , BCR Signaling , Ubiquitin Proteasome Pathway , S100 Proteins

Application Details

Comment:	Related Products: ABIN968547 , ABIN967389
Restrictions:	For Research Use only

Handling

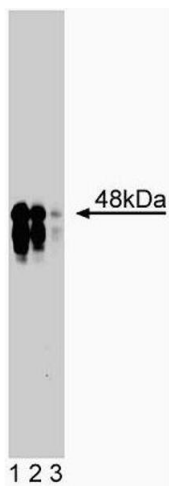
Format:	Liquid
---------	--------

Handling

Concentration:	250 µg/mL
Buffer:	Aqueous buffered solution containing BSA, glycerol, and ≤0.09 % sodium azide.
Preservative:	Sodium azide
Precaution of Use:	This product contains Sodium azide: a POISONOUS AND HAZARDOUS SUBSTANCE which should be handled by trained staff only.
Storage:	-20 °C
Storage Comment:	Store undiluted at -20° C.

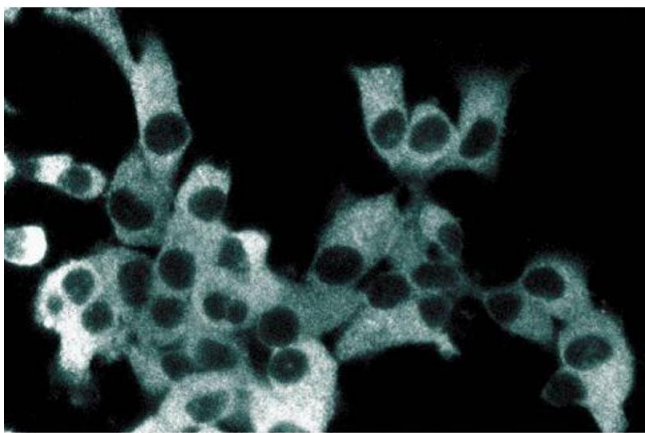
Publications

Product cited in:	<p>Weil, Schwamborn, Alcover, Bessia, Di Bartolo, Israël: "Induction of the NF-kappaB cascade by recruitment of the scaffold molecule NEMO to the T cell receptor." in: Immunity, Vol. 18, Issue 1, pp. 13-26, (2003) (PubMed).</p> <p>Chu, Shin, Yang, DiDonato, Ballard: "IKKgamma mediates the interaction of cellular IkappaB kinases with the tax transforming protein of human T cell leukemia virus type 1." in: The Journal of biological chemistry, Vol. 274, Issue 22, pp. 15297-300, (1999) (PubMed).</p> <p>Jin, Giordano, Kibler, Nakano, Jeang: "Role of adapter function in oncoprotein-mediated activation of NF-kappaB. Human T-cell leukemia virus type I Tax interacts directly with IkappaB kinase gamma." in: The Journal of biological chemistry, Vol. 274, Issue 25, pp. 17402-5, (1999) (PubMed).</p> <p>Rothwarf, Zandi, Natoli, Karin: "IKK-gamma is an essential regulatory subunit of the IkappaB kinase complex." in: Nature, Vol. 395, Issue 6699, pp. 297-300, (1998) (PubMed).</p> <p>Yamaoka, Courtois, Bessia, Whiteside, Weil, Agou, Kirk, Kay, Israël: "Complementation cloning of NEMO, a component of the IkappaB kinase complex essential for NF-kappaB activation." in: Cell, Vol. 93, Issue 7, pp. 1231-40, (1998) (PubMed).</p>
-------------------	--



Western Blotting

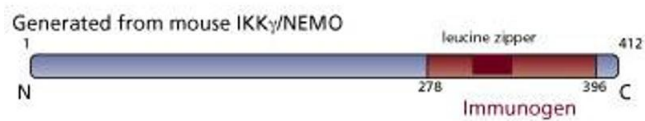
Image 1. Western blot analysis of IKKgamma on rat kidney lysate. Lane 1: 1:250, lane 2: 1:500, lane 3: 1:1000 dilution of anti-IKKgamma antibody.



Immunofluorescence

Image 2. Immunofluorescent staining of ES2 cells with anti-IKKgamma antibody.

Image 3.



Please check the [product details page](#) for more images. Overall 4 images are available for ABIN968464.