

Datasheet for ABIN968468

anti-Endoglin antibody (AA 24-144)**4** Images**4** Publications[Go to Product page](#)

Overview

Quantity:	150 µg
Target:	Endoglin (ENG)
Binding Specificity:	AA 24-144
Reactivity:	Human
Host:	Mouse
Clonality:	Monoclonal
Conjugate:	This Endoglin antibody is un-conjugated
Application:	Western Blotting (WB), Immunofluorescence (IF)

Product Details

Immunogen:	Human S-Endoglin aa. 24-144
Clone:	35-CD105
Isotype:	IgG1 kappa
Characteristics:	<ol style="list-style-type: none">1. Since applications vary, each investigator should titrate the reagent to obtain optimal results.2. Please refer to us for technical protocols.3. Source of all serum proteins is from USDA inspected abattoirs located in the United States.4. Caution: Sodium azide yields highly toxic hydrazoic acid under acidic conditions. Dilute azide compounds in running water before discarding to avoid accumulation of potentially explosive deposits in plumbing.
Purification:	The monoclonal antibody was purified from tissue culture supernatant or ascites by affinity chromatography.

Target Details

Target:	Endoglin (ENG)
Alternative Name:	CD105 (ENG Products)
Background:	<p>Endoglin (CD105), a major glycoprotein of human vascular endothelium, is a type I integral membrane protein with a large extracellular region, a hydrophobic transmembrane region, and a short cytoplasmic tail. It also contains an RGD tripeptide that may be important for cellular adhesion. There are two forms of endoglin (S-endoglin and L-endoglin) that differ in the length of their cytoplasmic tails. However, the isoforms may have similar functional activity. When overexpressed in fibroblasts, both form disulfide-linked homodimers via their extracellular domains. Endoglin binds TGF-beta1 and TGF-beta3 by associating with TGF-beta type II receptor and binds BMP-7 by associating with activin type II receptor. Thus, endoglin is an accessory protein of multiple TGF-beta superfamily kinase receptor complexes. Loss of function mutations in the human endoglin gene cause hereditary hemorrhagic telangiectasia, which is characterized by vascular malformations. Deletion of endoglin in mice leads to death due to defective vascular development. Thus, endoglin is an endothelial specific cell surface protein that may regulate angiogenesis through interactions with TGF-beta superfamily kinase receptors. This antibody is routinely tested by western blot analysis.</p> <p>Synonyms: Endoglin</p>
Molecular Weight:	95 kDa

Application Details

Comment:	Related Products: ABIN968536, ABIN967389
Restrictions:	For Research Use only

Handling

Format:	Liquid
Concentration:	250 µg/mL
Buffer:	Aqueous buffered solution containing BSA, glycerol, and ≤0.09 % sodium azide.
Preservative:	Sodium azide
Precaution of Use:	This product contains Sodium azide: a POISONOUS AND HAZARDOUS SUBSTANCE which should be handled by trained staff only.
Storage:	-20 °C

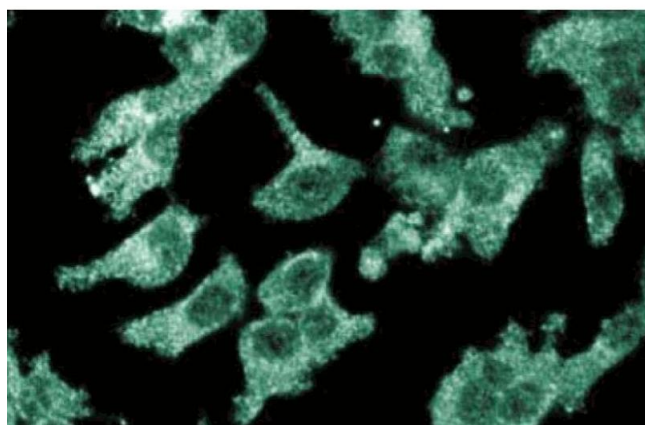
Handling

Storage Comment: Store undiluted at -20° C.

Publications

- Product cited in: Barbara, Wrana, Letarte: "Endoglin is an accessory protein that interacts with the signaling receptor complex of multiple members of the transforming growth factor-beta superfamily." in: **The Journal of biological chemistry**, Vol. 274, Issue 2, pp. 584-94, (1999) ([PubMed](#)).
- Li, Sorensen, Brooke, Urness, Davis, Taylor, Boak, Wendel: "Defective angiogenesis in mice lacking endoglin." in: **Science (New York, N.Y.)**, Vol. 284, Issue 5419, pp. 1534-7, (1999) ([PubMed](#)).
- Bellón, Corbí, Lastres, Calés, Cebrián, Vera, Cheifetz, Massague, Letarte, Bernabéu: "Identification and expression of two forms of the human transforming growth factor-beta-binding protein endoglin with distinct cytoplasmic regions." in: **European journal of immunology**, Vol. 23, Issue 9, pp. 2340-5, (1993) ([PubMed](#)).
- Gougos, Letarte: "Primary structure of endoglin, an RGD-containing glycoprotein of human endothelial cells." in: **The Journal of biological chemistry**, Vol. 265, Issue 15, pp. 8361-4, (1990) ([PubMed](#)).

Images



Immunofluorescence

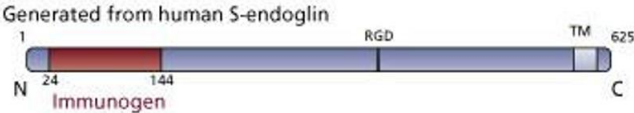
Image 1. Immunofluorescent staining of ES2 cells with anti-CD105/endoglin antibody.



Western Blotting

Image 2.

Image 3.



Please check the [product details page](#) for more images. Overall 4 images are available for ABIN968468.