

Datasheet for ABIN968525
anti-ube3a antibody (AA 501-712)[2 Images](#)[2 Publications](#)[Go to Product page](#)

Overview

Quantity:	50 µg
Target:	ube3a
Binding Specificity:	AA 501-712
Reactivity:	Human, Mouse
Host:	Mouse
Clonality:	Monoclonal
Conjugate:	This ube3a antibody is un-conjugated
Application:	Western Blotting (WB), Immunofluorescence (IF)

Product Details

Immunogen:	Mouse UBE3A aa. 501-712
Clone:	13-UBE3A
Isotype:	IgG1
Cross-Reactivity:	Human
Characteristics:	<ol style="list-style-type: none">1. Since applications vary, each investigator should titrate the reagent to obtain optimal results.2. Please refer to us for technical protocols.3. Source of all serum proteins is from USDA inspected abattoirs located in the United States.4. Caution: Sodium azide yields highly toxic hydrazoic acid under acidic conditions. Dilute azide compounds in running water before discarding to avoid accumulation of potentially explosive deposits in plumbing.
Purification:	The monoclonal antibody was purified from tissue culture supernatant or ascites by affinity

Product Details

chromatography.

Target Details

Target:	ube3a
Alternative Name:	UBE3A (ube3a Products)
Background:	<p>Protein ubiquitination is the end product of a multienzyme cascade that involves sequential thiol-ester bond interactions between ubiquitin and enzymes termed E1 ubiquitin-activating enzymes, E2 ubiquitin-conjugating enzymes, and E3 ubiquitin protein ligases. UBE3A (human papilloma virus E6-associated protein, E6-AP) is an E3 ubiquitin protein ligase that is linked to the neurological disorder Angelman syndrome. It mediates the interaction of human papilloma virus types 16 and 18 E6 proteins with p53, which targets p53 to the ubiquitination-proteasome degradation pathway. The C-terminal region of UBE3A contains a hect domain, which is found in many E3 ubiquitin protein ligases, while the central region contains an E6 binding region. UBE3A is expressed in the cytoplasm and nucleus of many tissues. The interaction of UBE3A with the progesterone receptor coactivates transcriptional activity of the receptor in the presence of bound hormone. Thus, UBE3A is an essential component of the ubiquitination degradation pathway and the nuclear hormone receptor signal transduction pathways. This antibody is routinely tested by western blot analysis.</p> <p>Synonyms: Ubiquitin Protein Ligase 3A</p>
Molecular Weight:	100 kDa
Pathways:	Intracellular Steroid Hormone Receptor Signaling Pathway

Application Details

Comment:	Related Products: ABIN968584, ABIN967389
Restrictions:	For Research Use only

Handling

Format:	Liquid
Concentration:	250 µg/mL
Buffer:	Aqueous buffered solution containing BSA, glycerol, and ≤0.09 % sodium azide.
Preservative:	Sodium azide

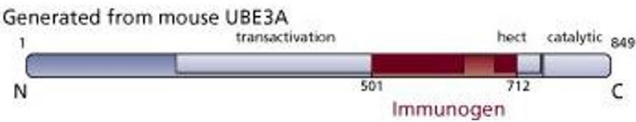
Handling

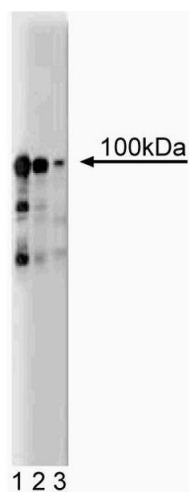
Precaution of Use:	This product contains Sodium azide: a POISONOUS AND HAZARDOUS SUBSTANCE which should be handled by trained staff only.
Storage:	-20 °C
Storage Comment:	Store undiluted at -20° C.

Publications

Product cited in:	<p>Nawaz, Lonard, Smith, Lev-Lehman, Tsai, Tsai, OMalley: "The Angelman syndrome-associated protein, E6-AP, is a coactivator for the nuclear hormone receptor superfamily." in: Molecular and cellular biology, Vol. 19, Issue 2, pp. 1182-9, (1999) (PubMed).</p> <p>Matsuura, Sutcliffe, Fang, Galjaard, Jiang, Benton, Rommens, Beaudet: "De novo truncating mutations in E6-AP ubiquitin-protein ligase gene (UBE3A) in Angelman syndrome." in: Nature genetics, Vol. 15, Issue 1, pp. 74-7, (1997) (PubMed).</p>
-------------------	---

Images





Western Blotting

Image 2. Western blot analysis of UBE3A on a EB-1 cell lysate (Human B lymphoblast, Burkitt's lymphoma, ATCC HTB-60). Lane 1: 1:500, lane 2: 1:1000, lane 3: 1:2000 dilution of the mouse anti- UEB3A antibody.