

Datasheet for ABIN968623 anti-ARHGEF7 antibody (AA 351-453)



[Go to Product page](#)

2 Images

4 Publications

Overview

Quantity:	50 µg
Target:	ARHGEF7
Binding Specificity:	AA 351-453
Reactivity:	Rat, Mouse, Chicken, Dog
Host:	Mouse
Clonality:	Monoclonal
Conjugate:	This ARHGEF7 antibody is un-conjugated
Application:	Western Blotting (WB), Immunofluorescence (IF)

Product Details

Immunogen:	Rat betaPIX aa. 351-453
Clone:	23-bPIX
Isotype:	IgG1
Cross-Reactivity:	Chicken, Dog (Canine), Mouse (Murine)
Characteristics:	<ol style="list-style-type: none"> 1. Since applications vary, each investigator should titrate the reagent to obtain optimal results. 2. Please refer to us for technical protocols. 3. Caution: Sodium azide yields highly toxic hydrazoic acid under acidic conditions. Dilute azide compounds in running water before discarding to avoid accumulation of potentially explosive deposits in plumbing. 4. Source of all serum proteins is from USDA inspected abattoirs located in the United States.
Purification:	The monoclonal antibody was purified from tissue culture supernatant or ascites by affinity

Product Details

chromatography.

Target Details

Target:	ARHGEF7
Alternative Name:	beta PIX (ARHGEF7 Products)
Background:	<p>The activity of PAK family kinases is regulated through interaction with the small GTPases Cdc42 and Rac1. PAKs are activated by the GTP-bound form of Cdc-42 and Rac1, and recruitment of PAKs to focal complexes has been implicated in Cdc42- and Rac1-dependent regulation of focal contact formation. PAK-interacting exchange factor (PIX) was identified in a screen for proteins that bind PAKs. Two forms of PIX have been identified: an 85 kDa protein designated alphaPIX and a 78 kDa protein designated betaPIX. These proteins have 80% identity in their overlapping regions, which include myosin-like, pleckstrin (PH), Dbl (DH), and SH3 domains. In addition, alphaPIX contains a calponin-like domain at the N-terminus. The expression of betaPIX is ubiquitous, while alphaPIX is expressed in heart, muscle, and thymus. PIX can act as a guanine nucleotide exchange factor for Rac1 and co-transfection of betaPIX, Cdc42, and alphaPAK results in increased alphaPAK activity. PIX binding to PAK is required for localization of PAKs to focal complexes and injection of betaPIX leads to rac1-dependent membrane ruffling. Thus, PIX is important for PAK localization and activity during small GTPase-dependent regulation of cell morphology.</p>
Molecular Weight:	78 kDa
Pathways:	EGFR Signaling Pathway , Neurotrophin Signaling Pathway , EGFR Downregulation

Application Details

Restrictions:	For Research Use only
---------------	-----------------------

Handling

Format:	Liquid
Concentration:	250 µg/mL
Buffer:	Aqueous buffered solution containing BSA, glycerol, and ≤0.09 % sodium azide.
Preservative:	Sodium azide
Precaution of Use:	This product contains Sodium azide: a POISONOUS AND HAZARDOUS SUBSTANCE which should be handled by trained staff only.

Handling

Storage:	-20 °C
Storage Comment:	Store undiluted at -20°C.

Publications

Product cited in:	<p>Turner, Brown, Perrotta, Riedy, Nikolopoulos, McDonald, Bagrodia, Thomas, Leventhal: "Paxillin LD4 motif binds PAK and PIX through a novel 95-kD ankyrin repeat, ARF-GAP protein: A role in cytoskeletal remodeling." in: The Journal of cell biology, Vol. 145, Issue 4, pp. 851-63, (1999) (PubMed).</p> <p>Bagrodia, Taylor, Jordon, Van Aelst, Cerione: "A novel regulator of p21-activated kinases." in: The Journal of biological chemistry, Vol. 273, Issue 37, pp. 23633-6, (1998) (PubMed).</p> <p>Manser, Loo, Koh, Zhao, Chen, Tan, Tan, Leung, Lim: "PAK kinases are directly coupled to the PIX family of nucleotide exchange factors." in: Molecular cell, Vol. 1, Issue 2, pp. 183-92, (1998) (PubMed).</p> <p>Oh, Yoo, Jo, Song, Kim, Park: "Cloning of a SH3 domain-containing proline-rich protein, p85SPR, and its localization in focal adhesion." in: Biochemical and biophysical research communications, Vol. 235, Issue 3, pp. 794-8, (1997) (PubMed).</p>
-------------------	---

Images



Western Blotting

Image 1. Western blot analysis of betaPIX on PC12 lysate. Lane 1: 1:250, lane 2: 1:500, lane 3: 1:1000 dilution of betaPIX.

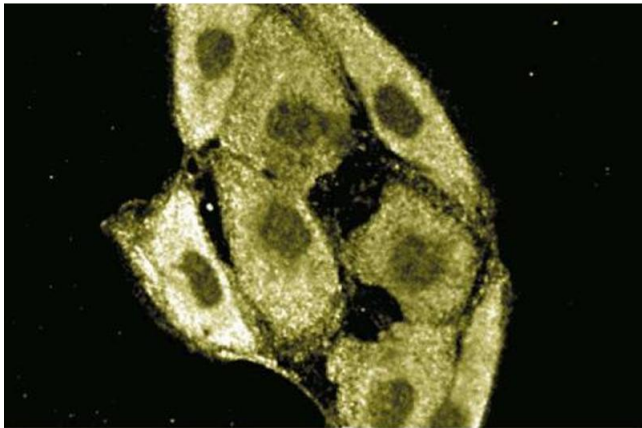


Image 2. MDCK