

Datasheet for ABIN968936
anti-LIN28A antibody (AA 93-209)

3 Images

2 Publications

[Go to Product page](#)

Overview

Quantity:	100 µL
Target:	LIN28A
Binding Specificity:	AA 93-209
Reactivity:	Human
Host:	Mouse
Clonality:	Monoclonal
Application:	Western Blotting (WB), ELISA, Immunocytochemistry (ICC)

Product Details

Immunogen:	Purified recombinant fragment of LIN28 (aa93-209) expressed in E. coli.
Clone:	6D1F9
Isotype:	IgG1
Purification:	purified

Target Details

Target:	LIN28A
Alternative Name:	LIN28 (LIN28A Products)
Background:	Description: LIN28: lin-28 homolog (C. elegans), also known as CSDD1, ZCCHC1. Entrez Protein NP_078950. LIN28 was first discovered in the nematode C. elegans. It is a heterochronic protein in C. elegans involved in the timing of developmental events and choice of stage specific cell fates. LIN28 expression has been found to be regulated post-transcriptionally by

Target Details

miRNAs in both nematodes and mammals. In humans it is expressed in embryonic stem cells and its expression decreases during differentiation. It is negatively regulated by retinoic acid in neuronal differentiation.

Aliases: CSDD1, LIN-28, LIN28A, ZCCHC1

Molecular Weight: 23 kDa

Gene ID: 79727

HGNC: 79727

Pathways: [Stem Cell Maintenance](#)

Application Details

Application Notes: ELISA: 1:10000, WB: 1:500 - 1:2000, ICC: 1:200 - 1:1000

Restrictions: For Research Use only

Handling

Format: Liquid

Buffer: Antibody are purified by protein G affinity chromatography. Liquid in 0.01M Phosphate buffer, pH 7.4 containing 0.03 % sodium azide.

Preservative: Sodium azide

Precaution of Use: This product contains Sodium azide: a POISONOUS AND HAZARDOUS SUBSTANCE which should be handled by trained staff only.

Storage: 4 °C/-20 °C

Storage Comment: 4°C, -20°C for long term storage

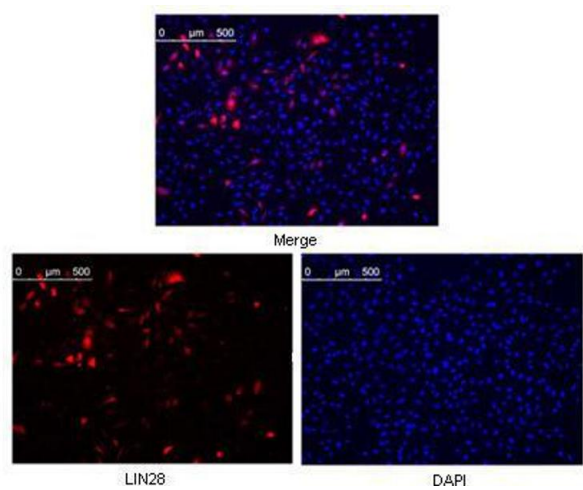
Publications

Product cited in: Jan, Adolfsson, Allaman, Buccarello, Magistretti, Pfeifer, Muhs, Lashuel: "Abeta42 neurotoxicity is mediated by ongoing nucleated polymerization process rather than by discrete Abeta42 species." in: **The Journal of biological chemistry**, Vol. 286, Issue 10, pp. 8585-96, (2011) ([PubMed](#)).

Deshmukh, Salehzadeh, Metayer-Coustard, Fahlman, Nair, Al-Khalili: "Post-transcriptional gene silencing of ribosomal protein S6 kinase 1 restores insulin action in leucine-treated skeletal

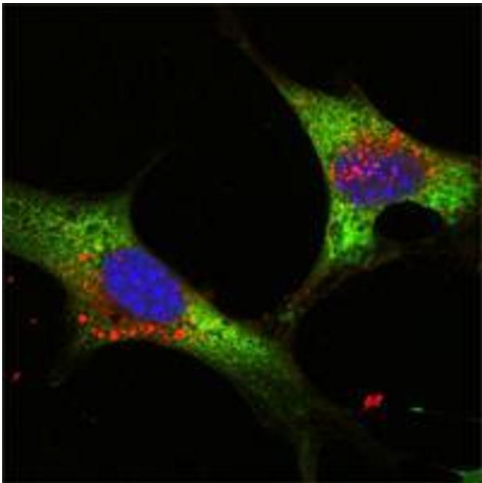
muscle." in: **Cellular and molecular life sciences : CMLS**, Vol. 66, Issue 8, pp. 1457-66, (2009) ([PubMed](#)).

Images



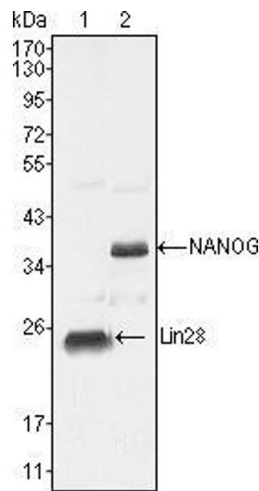
Immunofluorescence

Image 1. Confocal immunofluorescence analysis of methanol fixed Hela cells were transfected with pMX construct of human LIN28, cells were analyzed ~62 hours after transfection.



Immunofluorescence

Image 2. Confocal immunofluorescence analysis of NTERA-2 cells using LIN28 mouse mAb (green). Blue: DRAQ5 fluorescent DNA dye.



Western Blotting

Image 3. Western blot analysis using LIN28 mouse mAb against NTERA-2 cell lysate (1).