



Datasheet for ABIN968946

anti-Smooth Muscle Actin antibody



[Go to Product page](#)

4 Images

2 Publications

Overview

Quantity:	100 µL
Target:	Smooth Muscle Actin (ACTA2)
Reactivity:	Human, Monkey
Host:	Mouse
Clonality:	Monoclonal
Conjugate:	This Smooth Muscle Actin antibody is un-conjugated
Application:	Western Blotting (WB), Immunohistochemistry (IHC), ELISA

Product Details

Immunogen:	Purified recombinant fragment of human ACTA2 expressed in E. coli.
Clone:	4F4
Isotype:	IgG1
Purification:	purified

Target Details

Target:	Smooth Muscle Actin (ACTA2)
Alternative Name:	ACTA2 (ACTA2 Products)
Background:	Description: Actin, alpha 2, smooth muscle, aorta, major constituent of thin filaments. Aliases: AAT6, ACTSA, ACTA2
Molecular Weight:	42 kDa

Target Details

Gene ID:	59
HGNC:	59
Pathways:	Myometrial Relaxation and Contraction, Skeletal Muscle Fiber Development

Application Details

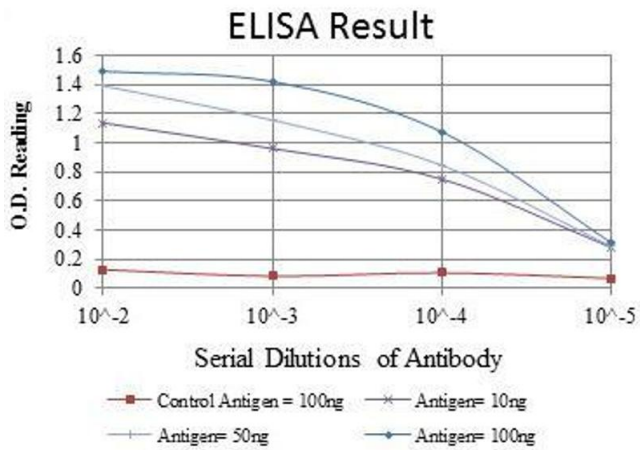
Application Notes:	ELISA: 1:10000, WB: 1:500 - 1:2000, IHC: 1:200 - 1:1000
Restrictions:	For Research Use only

Handling

Format:	Liquid
Buffer:	Ascitic fluid containing 0.03 % sodium azide.
Preservative:	Sodium azide
Precaution of Use:	This product contains Sodium azide: a POISONOUS AND HAZARDOUS SUBSTANCE which should be handled by trained staff only.
Storage:	4 °C/-20 °C
Storage Comment:	4°C, -20°C for long term storage

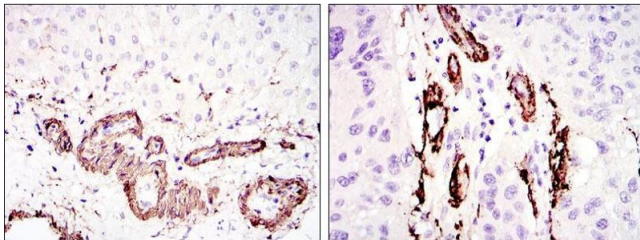
Publications

Product cited in:	<p>Guo, Pannu, Tran-Fadulu, Papke, Yu, Avidan, Bourgeois, Estrera, Safi, Sparks, Amor, Ades, McConnell, Willoughby, Abuelo, Willing, Lewis, Kim, Scherer, Tung, Ahn, Buja, Raman, Shete, Milewicz: "Mutations in smooth muscle alpha-actin (ACTA2) lead to thoracic aortic aneurysms and dissections." in: Nature genetics, Vol. 39, Issue 12, pp. 1488-93, (2007) (PubMed).</p> <p>Salas, Bartoli, Deville, Gaudart, Fina, Calisti, Bollini, Curvale, Gentet, Duffaud, Figarella-Branger, Bouvier: "Ezrin and alpha-smooth muscle actin are immunohistochemical prognostic markers in conventional osteosarcomas." in: Virchows Archiv : an international journal of pathology, Vol. 451, Issue 6, pp. 999-1007, (2007) (PubMed).</p>
-------------------	--



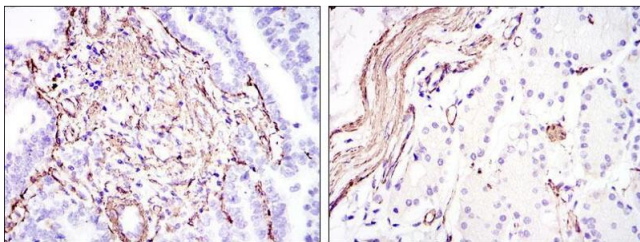
ELISA

Image 1. Red: Control Antigen (100 ng), Purple: Antigen (10 ng), Green: Antigen (50 ng), Blue: Antigen (100 ng),



Immunohistochemistry

Image 2. Immunohistochemical analysis of paraffin-embedded liver tissues (left) and lung cancer tissues (right) using ACTA2 mouse mAb with DAB staining.



Immunohistochemistry

Image 3. Immunohistochemical analysis of paraffin-embedded stomach cancer (left) and stomach tissues (right) using ACTA2 mouse mAb with DAB staining.

Please check the [product details page](#) for more images. Overall 4 images are available for ABIN968946.