

Datasheet for ABIN968968

anti-ATF2 antibody

3 Images

2 Publications

[Go to Product page](#)

Overview

Quantity:	100 µL
Target:	ATF2
Reactivity:	Human, Mouse
Host:	Mouse
Clonality:	Monoclonal
Conjugate:	This ATF2 antibody is un-conjugated
Application:	Western Blotting (WB), Immunohistochemistry (IHC), ELISA

Product Details

Immunogen:	Purified recombinant fragment of human ATF2 expressed in E. coli.
Clone:	4F12
Isotype:	IgG1
Purification:	purified

Target Details

Target:	ATF2
Alternative Name:	ATF2 (ATF2 Products)
Background:	Description: This gene encodes a transcription factor that is a member of the leucine zipper family of DNA binding proteins. This protein binds to the cAMP-responsive element (CRE), an octameric palindrome. The protein forms a homodimer or heterodimer with c-Jun and stimulates CRE-dependent transcription. The protein is also a histone acetyltransferase (HAT)

Target Details

that specifically acetylates histones H2B and H4 in vitro, thus it may represent a class of sequence-specific factors that activate transcription by direct effects on chromatin components. Additional transcript variants have been identified but their biological validity has not been determined. Tissue specificity: Abundant expression seen in the brain.

Aliases: HB16, CREB2, TREB7, CRE-BP1, MGC111558, ATF2

Molecular Weight: 55 kDa

Gene ID: 1386

HGNC: 1386

Pathways: [MAPK Signaling](#), [RTK Signaling](#), [Thyroid Hormone Synthesis](#), [Activation of Innate immune Response](#), [Chromatin Binding](#), [Myometrial Relaxation and Contraction](#), [Synaptic Membrane, Tube Formation](#), [Toll-Like Receptors Cascades](#)

Application Details

Application Notes: ELISA: 1:10000, WB: 1:500 - 1:2000, IHC: 1:200 - 1:1000

Restrictions: For Research Use only

Handling

Format: Liquid

Buffer: Ascitic fluid containing 0.03 % sodium azide.

Preservative: Sodium azide

Precaution of Use: This product contains Sodium azide: a POISONOUS AND HAZARDOUS SUBSTANCE which should be handled by trained staff only.

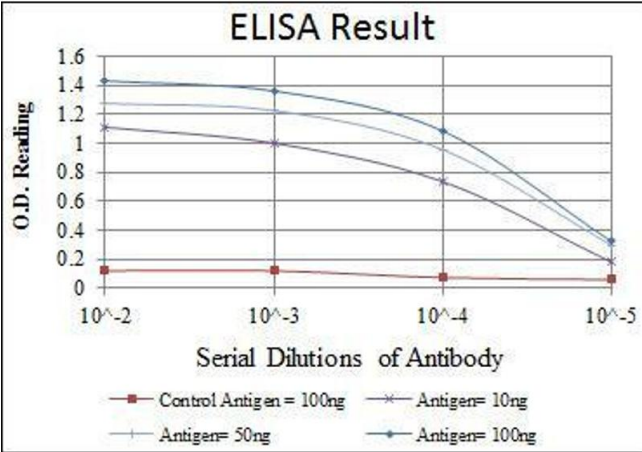
Storage: 4 °C/-20 °C

Storage Comment: 4°C, -20°C for long term storage

Publications

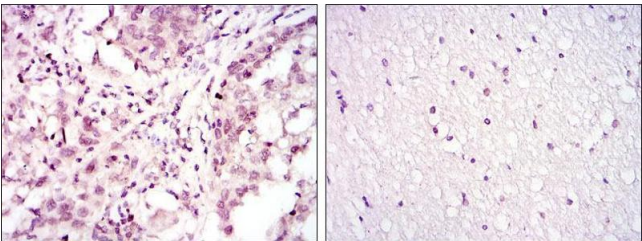
Product cited in: Chen, Takeuchi, Moroi, Hayashida, Kido, Chen, Tomoeda, Uenotsuchi, Tu, Furue, Urabe: "Overexpression of phosphorylated-ATF2 and STAT3 in cutaneous squamous cell carcinoma, Bowen's disease and basal cell carcinoma." in: **Journal of dermatological science**, Vol. 51, Issue 3, pp. 210-5, (2008) ([PubMed](#)).

Bhounik, Singha, OConnell, Ronai: "Regulation of TIP60 by ATF2 modulates ATM activation." in:
The Journal of biological chemistry, Vol. 283, Issue 25, pp. 17605-14, (2008) ([PubMed](#)).



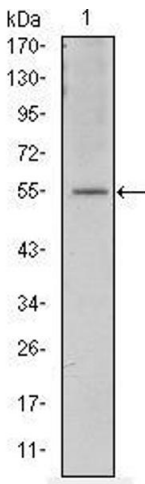
ELISA

Image 1. Red: Control Antigen (100 ng), Purple: Antigen (10 ng), Green: Antigen (50 ng), Blue: Antigen (100 ng),



Immunohistochemistry

Image 2. Immunohistochemical analysis of paraffin-embedded lung cancer (left) and brain tissues (right) using ATF2 mouse mAb with DAB staining.



Western Blotting

Image 3. Western blot analysis using ATF2 mouse mAb against NIH/3T3 cell lysate.