

Datasheet for ABIN969002

anti-CARM1 antibody

4 Images

2 Publications

[Go to Product page](#)

Overview

Quantity:	100 µL
Target:	CARM1
Reactivity:	Human, Rat, Monkey
Host:	Mouse
Clonality:	Monoclonal
Conjugate:	This CARM1 antibody is un-conjugated
Application:	Western Blotting (WB), ELISA, Immunohistochemistry (IHC), Flow Cytometry (FACS), Immunocytochemistry (ICC)

Product Details

Immunogen:	Purified recombinant fragment of human CARM1 expressed in E. coli.
Clone:	3H2
Isotype:	IgG1
Purification:	purified

Target Details

Target:	CARM1
Alternative Name:	CARM1 (CARM1 Products)
Background:	Description: Protein arginine N-methyltransferases, such as CARM1, catalyze the transfer of a methyl group from S-adenosyl-L-methionine to the side chain nitrogens of arginine residues within proteins to form methylated arginine derivatives and S-adenosyl-L-homocysteine. Protein

Target Details

	arginine methylation has been implicated in signal transduction, metabolism of nascent pre-RNA, and transcriptional activation (Frankel et al. 2002 (PubMed 11724789). Tissue specificity: Overexpressed in prostate adenocarcinomas and high-grade prostatic intraepithelial neoplasia. Aliases: PRMT4, CARM1
Molecular Weight:	65 kDa
Gene ID:	10498
HGNC:	10498
Pathways:	Intracellular Steroid Hormone Receptor Signaling Pathway , Regulation of Intracellular Steroid Hormone Receptor Signaling , Regulation of Lipid Metabolism by PPARalpha , Regulation of Muscle Cell Differentiation , Skeletal Muscle Fiber Development , Positive Regulation of fat Cell Differentiation

Application Details

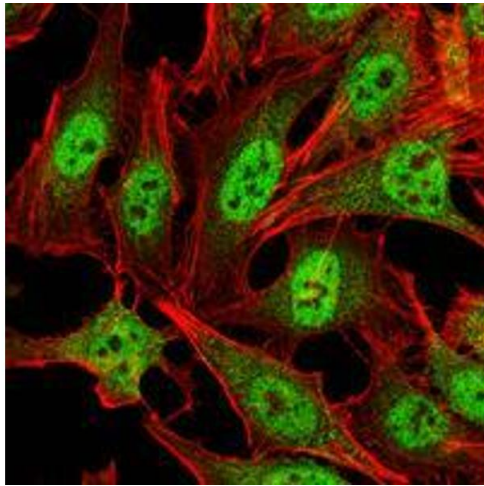
Application Notes:	ELISA: 1:10000, WB: 1:500 - 1:2000, IHC: 1:200 - 1:1000, ICC: 1:200 - 1:1000, FCM: 1:200 - 1:400
Restrictions:	For Research Use only

Handling

Format:	Liquid
Buffer:	Ascitic fluid containing 0.03 % sodium azide.
Preservative:	Sodium azide
Precaution of Use:	This product contains Sodium azide: a POISONOUS AND HAZARDOUS SUBSTANCE which should be handled by trained staff only.
Storage:	4 °C/-20 °C
Storage Comment:	4°C, -20°C for long term storage

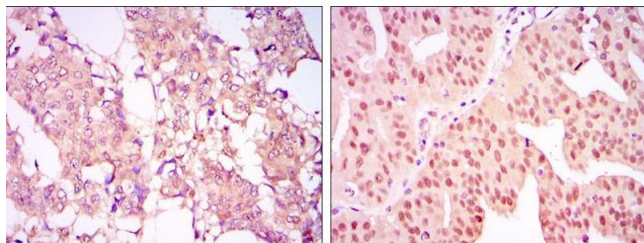
Publications

Product cited in:	Wang, Wu, Zhou, Guo, Zheng, Wang, Bi, Liu, Zhou, Guo, Sha: "Mapping of the N-linked glycoproteome of human spermatozoa." in: Journal of proteome research , Vol. 12, Issue 12, pp. 5750-9, (2013) (PubMed).
-------------------	--



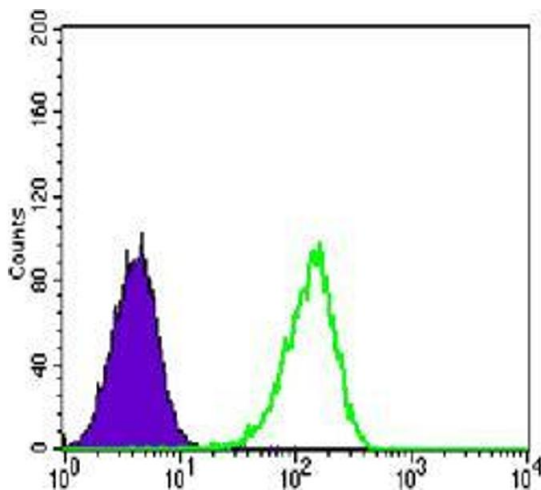
Immunofluorescence

Image 1. Immunofluorescence analysis of HeLa cells using CARM1 mouse mAb (green). Red: Actin filaments have been labeled with Alexa Fluor-555 phalloidin.



Immunohistochemistry

Image 2. Immunohistochemical analysis of paraffin-embedded breast cancer tissues (left) and ovarian cancer tissues (right) using CARM1 mouse mAb with DAB staining.



Flow Cytometry

Image 3. Flow cytometric analysis of Lovo cells using CARM1 mouse mAb (green) and negative control (purple).

Please check the [product details page](#) for more images. Overall 4 images are available for ABIN969002.