

Datasheet for ABIN969014
anti-Integrin beta 2 antibody



[Go to Product page](#)

2 Images

3 Publications

Overview

Quantity:	100 µL
Target:	Integrin beta 2 (ITGB2)
Reactivity:	Human, Mouse
Host:	Mouse
Clonality:	Monoclonal
Conjugate:	This Integrin beta 2 antibody is un-conjugated
Application:	ELISA, Immunocytochemistry (ICC)

Product Details

Purpose:	CD18 Antibody
Immunogen:	Purified recombinant fragment of CD18 expressed in E. Coli.
Clone:	10E12
Isotype:	IgG2b
Purification:	Ascitic fluid

Target Details

Target:	Integrin beta 2 (ITGB2)
Alternative Name:	CD18 (ITGB2 Products)
Background:	Description: CD18, also known as ITGB2 (integrin beta chain beta 2). Integrins are integral cell-surface proteins composed of an alpha chain and a beta chain. A given chain may combine

Target Details

with multiple partners resulting in different integrins. For example, beta 2 combines with the alpha L chain to form the integrin LFA-1, and combines with the alpha M chain to form the integrin Mac-1. Integrins are known to participate in cell adhesion as well as cell-surface mediated signalling. CD18 is expressed by most leucocytes. Defects in this gene are the cause of leukocyte adhesion deficiency type I (LAD1). Two transcript variants encoding the same protein have been identified for this gene.

Aliases: LAD, MF17, LCAMB, LFA-1, ITGB2

Molecular Weight:	85kDa
Gene ID:	3689
HGNC:	3689
UniProt:	P05107
Pathways:	NF-kappaB Signaling , Activation of Innate immune Response , Toll-Like Receptors Cascades , Activated T Cell Proliferation

Application Details

Application Notes:	ELISA: 1/10000 ICC: 1/200 - 1/1000
Restrictions:	For Research Use only

Handling

Format:	Liquid
Buffer:	Ascitic fluid containing 0.03 % sodium azide.
Preservative:	Sodium azide
Precaution of Use:	This product contains Sodium azide: a POISONOUS AND HAZARDOUS SUBSTANCE which should be handled by trained staff only.
Storage:	4 °C,-20 °C
Storage Comment:	Store at 4°C short term. Aliquot and store at -20°C long term. Avoid freeze/thaw cycles.

Publications

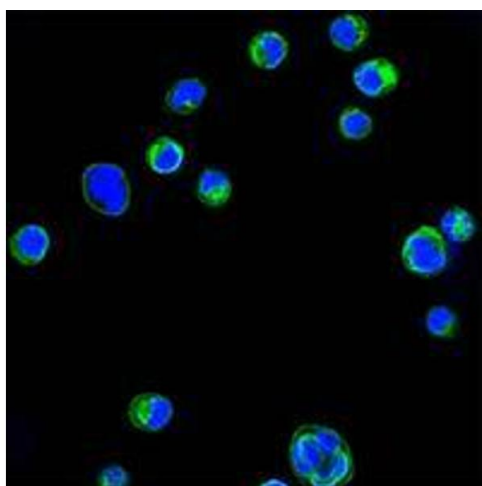
Product cited in:	Chakrabarti, Patel: "The atypical zeta (zeta) isoform of protein kinase C regulates CD11b/CD18 activation in human neutrophils." in: Microcirculation (New York, N.Y. : 1994) , Vol. 15, Issue 6,
-------------------	--

pp. 555-67, (2008) ([PubMed](#)).

Doisne, Castaigne, Deruyffelaere, Dieu-Nosjean, Chamot, Alcaide-Loridan, Charron, Al-Daccak: "The context of HLA-DR/CD18 complex in the plasma membrane governs HLA-DR-derived signals in activated monocytes." in: **Molecular immunology**, Vol. 45, Issue 3, pp. 709-18, (2007) ([PubMed](#)).

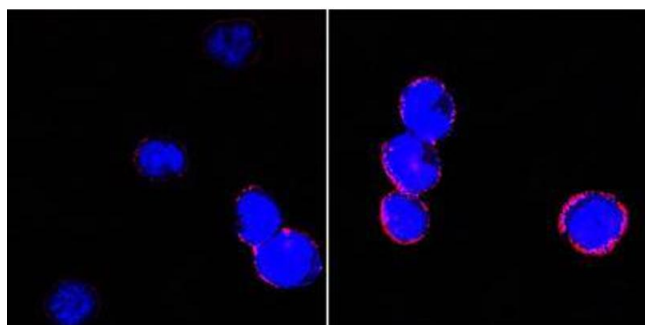
Li, Tang, Puan, Law, Tan: "The cytosolic protein talin induces an intermediate affinity integrin $\alpha\text{L}\beta\text{2}$." in: **The Journal of biological chemistry**, Vol. 282, Issue 33, pp. 24310-9, (2007) ([PubMed](#)).

Images



Immunofluorescence

Image 1. Confocal immunofluorescence analysis of HL60 cells using CD18 mouse mAb (green). Blue: DRAQ5 fluorescent DNA dye.



Immunofluorescence

Image 2. Confocal immunofluorescence analysis of BCBL-1 cells (left) and L1210 cells (right) using CD18 mouse mAb (red). Blue: DRAQ5 fluorescent DNA dye.