

Datasheet for ABIN969023

## anti-CD38 antibody



[Go to Product page](#)

2 Images

2 Publications

### Overview

Quantity:	100 µL
Target:	CD38
Reactivity:	Human
Host:	Mouse
Clonality:	Monoclonal
Conjugate:	This CD38 antibody is un-conjugated
Application:	Immunohistochemistry (IHC), ELISA

### Product Details

Purpose:	CD38 Antibody
Immunogen:	Purified recombinant fragment of human CD38 expressed in E. Coli.
Clone:	6E12D4A12
Isotype:	IgG1
Purification:	Ascitic fluid

### Target Details

Target:	CD38
Abstract:	<a href="#">CD38 Products</a>
Background:	CD38 is a type II integral membrane glycoprotein which is present on early B and T cell lineages and activated B and T cells but is absent from most mature resting peripheral lymphocytes.

## Target Details

CD38 is also found on thymocytes, pre-B cells, germinal center B cells, mitogen-activated T cells, monocytes and Ig-secreting plasma cells. CD38 acts as a NAD glycohydrolase in T lymphocytes. On hematopoietic cells CD38 induces activation, proliferation, and differentiation of mature T and B cells and mediates apoptosis of myeloid and lymphoid progenitor cells. In addition to acting as a signaling receptor, CD38 is also an enzyme capable of producing several calcium-mobilizing metabolites, including cyclic adenosine diphosphate ribose (cADPR). CD38 also plays a role in maintaining survival of an invariant NK T (iNKT) cell subset that preferentially contributes to the maintenance of immunological tolerance.

Molecular Weight: 34 kDa

Gene ID: 952

UniProt: [P28907](#)

## Application Details

Application Notes: ELISA: 1/10000

Restrictions: For Research Use only

## Handling

Format: Liquid

Buffer: Ascitic fluid containing 0.03 % sodium azide.

Preservative: Sodium azide

Precaution of Use: This product contains Sodium azide: a POISONOUS AND HAZARDOUS SUBSTANCE which should be handled by trained staff only.

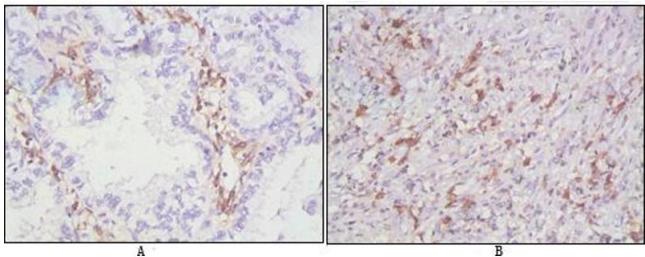
Storage: 4 °C, -20 °C

Storage Comment: Store at 4°C short term. Aliquot and store at -20°C long term. Avoid freeze/thaw cycles.

## Publications

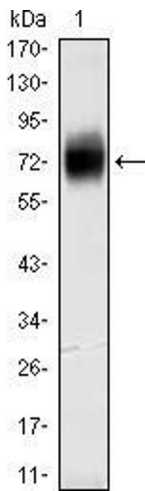
Product cited in: Pavón, Muñoz, Navarro, Raya-Alvarez, Callejas-Rubio, Navarro-Pelayo, Ortego-Centeno, Sancho, Zubiaur: "Increased association of CD38 with lipid rafts in T cells from patients with systemic lupus erythematosus and in activated normal T cells." in: **Molecular immunology**, Vol. 43, Issue 7, pp. 1029-39, (2005) ([PubMed](#)).

Liu, Verfaillie: "Myeloid-lymphoid initiating cells (ML-IC) are highly enriched in the rhodamine-c-kit(+)CD33(-)CD38(-) fraction of umbilical cord CD34(+) cells." in: **Experimental hematology**, Vol. 30, Issue 6, pp. 582-9, (2002) ([PubMed](#)).



Immunohistochemistry

**Image 1.** Immunohistochemical analysis of paraffin-embedded human lung cancer (A), lymphonodus tissue (B), showing cytomembrane localization using CD38 mouse mAb with DAB staining.



Western Blotting

**Image 2.** Western blot analysis using CD38 mouse mouse mAb against CD38-hlgGFc transfected HEK293 cell lysate.