

Datasheet for ABIN969057

anti-CIB1 antibody

2 Images

2 Publications



[Go to Product page](#)

Overview

Quantity:	100 µL
Target:	CIB1
Reactivity:	Human
Host:	Mouse
Clonality:	Monoclonal
Conjugate:	This CIB1 antibody is un-conjugated
Application:	Western Blotting (WB), ELISA, Immunohistochemistry (IHC)

Product Details

Immunogen:	Purified recombinant fragment of CIB1 expressed in E. coli.
Clone:	5A1F5E12
Purification:	purified

Target Details

Target:	CIB1
Alternative Name:	CIB1 (CIB1 Products)
Background:	Description: CIB1(also designated calcium and integrin binding 1 or calmyrin),with 191-amino acid protein(about 21 kDa), belongs to the calcium-binding protein family.CIB1 is known to interact with DNA-dependent protein kinase and may play a role in kinase-phosphatase regulation of DNA end joining.CIB1 is an EF-hand-containing protein that binds multiple effector proteins, including the platelet alpha(IIb)beta(3) integrin and several serine/threonine kinases

Target Details

and potentially modulates their function. CIB1 regulates platelet aggregation in hemostasis through a specific interaction with the alpha(IIb) cytoplasmic domain of platelet integrin alpha(IIb)beta(3). CIB1 is also ubiquitously expressed activating and inhibiting protein ligand of the InsP3R.

Aliases: CIB, KIP, KIP1, SIP2-28

Gene ID: 10519

HGNC: 10519

Application Details

Application Notes: ELISA: 1:10000, WB: 1:500 - 1:2000, IHC: 1:200 - 1:1000

Restrictions: For Research Use only

Handling

Format: Liquid

Buffer: Ascitic fluid containing 0.03 % sodium azide.

Preservative: Sodium azide

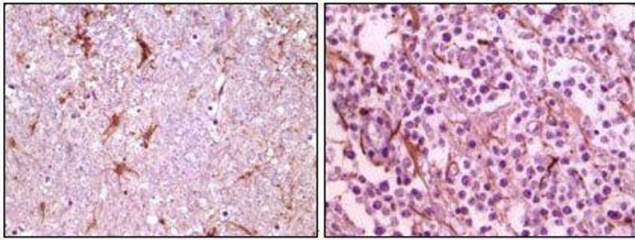
Precaution of Use: This product contains Sodium azide: a POISONOUS AND HAZARDOUS SUBSTANCE which should be handled by trained staff only.

Storage: 4 °C/-20 °C

Storage Comment: 4°C, -20°C for long term storage

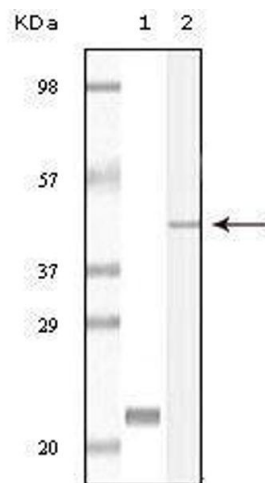
Publications

Product cited in: Wang, Wu, Zhou, Guo, Zheng, Wang, Bi, Liu, Zhou, Guo, Sha: "Mapping of the N-linked glycoproteome of human spermatozoa." in: **Journal of proteome research**, Vol. 12, Issue 12, pp. 5750-9, (2013) ([PubMed](#)).



Immunohistochemistry

Image 1. Immunohistochemical analysis of paraffin-embedded human thalamus (left) and glioma (right) tissue, showing membrane localization using CIB1 mouse mAb with DAB staining.



Western Blotting

Image 2. Western blot analysis using CIB1 mouse mAb against truncated CIB1 recombinant protein (1) and A431 cell lysate (2).