

Datasheet for ABIN969065

**anti-CRP antibody**

4 Images

2 Publications

[Go to Product page](#)

## Overview

Quantity:	100 µL
Target:	CRP
Reactivity:	Human
Host:	Mouse
Clonality:	Monoclonal
Application:	Western Blotting (WB), ELISA, Immunohistochemistry (IHC), Flow Cytometry (FACS)

## Product Details

Immunogen:	Purified recombinant fragment of human CRP expressed in E. coli.
Clone:	1G1
Isotype:	IgG1
Purification:	purified

## Target Details

Target:	CRP
Alternative Name:	C-Reactive Protein ( <a href="#">CRP Products</a> )
Background:	Description: The protein encoded by this gene belongs to the pentaxin family. It is involved in several host defense related functions based on its ability to recognize foreign pathogens and damaged cells of the host and to initiate their elimination by interacting with humoral and cellular effector systems in the blood. Consequently, the level of this protein in plasma increases greatly during acute phase response to tissue injury, infection, or other inflammatory

## Target Details

	stimuli.
	Aliases: PTX1
Molecular Weight:	25 kDa
Gene ID:	1401
HGNC:	1401
Pathways:	<a href="#">Carbohydrate Homeostasis</a>

## Application Details

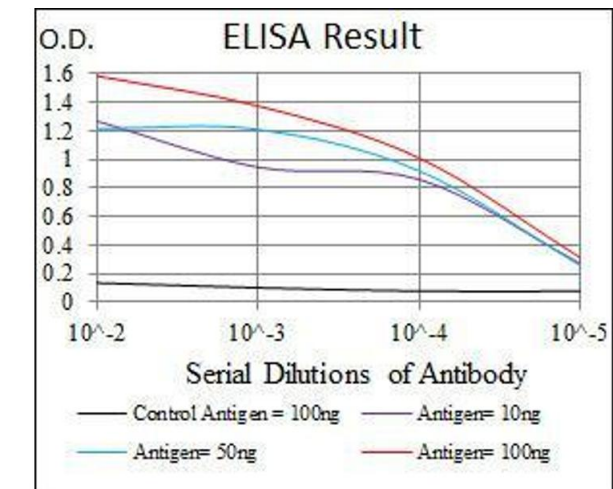
Application Notes:	ELISA: 1:10000, WB: 1:500 - 1:2000, IHC: 1:200 - 1:1000, FCM: 1:200 - 1:400
Restrictions:	For Research Use only

## Handling

Format:	Liquid
Buffer:	Ascitic fluid containing 0.03 % sodium azide.
Preservative:	Sodium azide
Precaution of Use:	This product contains Sodium azide: a POISONOUS AND HAZARDOUS SUBSTANCE which should be handled by trained staff only.
Storage:	4 °C/-20 °C
Storage Comment:	4°C, -20°C for long term storage

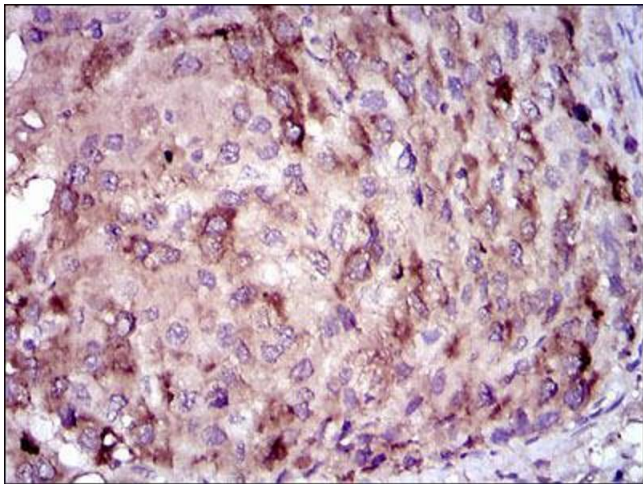
## Publications

Product cited in:	<p>Lourenço, Paulo Araújo, Paulo, Mascarenhas, Friões, Azevedo, Bettencourt: "Higher C-reactive protein predicts worse prognosis in acute heart failure only in noninfected patients." in: <b>Clinical cardiology</b>, Vol. 33, Issue 11, pp. 708-14, (2010) (<a href="#">PubMed</a>).</p> <p>Sun, Zhang, Gao, Li, Sun, Zhang, Xu: "Adiponectin reduces C-reactive protein expression and downregulates STAT3 phosphorylation induced by IL-6 in HepG2 cells." in: <b>Molecular and cellular biochemistry</b>, Vol. 347, Issue 1-2, pp. 183-9, (2010) (<a href="#">PubMed</a>).</p>
-------------------	---



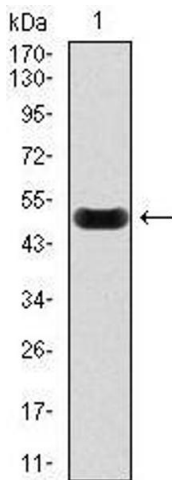
### ELISA

**Image 1.** Black line: Control Antigen (100 ng), Purple line: Antigen(10 ng), Blue line: Antigen (50 ng), Red line: Antigen (100 ng),



### Immunohistochemistry

**Image 2.** Immunohistochemical analysis of paraffin-embedded liver cancer tissues using CRP mouse mAb with DAB staining.



### Western Blotting

**Image 3.** Western blot analysis using CRP mAb against human CRP recombinant protein. ( AA: 1-224, Expected MW is 51 kDa)

Please check the [product details page](#) for more images. Overall 4 images are available for ABIN969065.