

Datasheet for ABIN969068

anti-CRTC3 antibody

5 Images

2 Publications

[Go to Product page](#)

Overview

Quantity:	100 µL
Target:	CRTC3
Reactivity:	Human, Monkey
Host:	Mouse
Clonality:	Monoclonal
Conjugate:	This CRTC3 antibody is un-conjugated
Application:	Western Blotting (WB), Immunohistochemistry (IHC), ELISA, Immunocytochemistry (ICC)

Product Details

Immunogen:	Purified recombinant fragment of human CRTC3 expressed in E. coli.
Clone:	5G9
Isotype:	IgG1
Purification:	purified

Target Details

Target:	CRTC3
Alternative Name:	CRTC3 (CRTC3 Products)
Background:	Description: Transcriptional coactivator for CREB1 which activates transcription through both consensus and variant cAMP response element (CRE) sites. Acts as a coactivator, in the SIK/TORC signaling pathway, being active when dephosphorylated and acts independently of CREB1 'Ser-133' phosphorylation. Enhances the interaction of CREB1 with TAF4. Regulates the

Target Details

expression of specific CREB-activated genes such as the steroidogenic gene, StAR. Potent coactivator of PPARGC1A and inducer of mitochondrial biogenesis in muscle cells. Also coactivator for TAX activation of the human T-cell leukemia virus type 1 (HTLV-1) long terminal repeats (LTR). Tissue specificity: Predominantly expressed in B and T lymphocytes. Highest levels in lung. Also expressed in brain, colon, heart, kidney, ovary, and prostate. Weak expression in liver, pancreas, muscle, small intestine, spleen and stomach.

Aliases: TORC3, FLJ21868, CRTC3

Molecular Weight: 68 kDa

Gene ID: 64784

HGNC: 64784

Pathways: [SARS-CoV-2 Protein Interactome](#), [The Global Phosphorylation Landscape of SARS-CoV-2 Infection](#)

Application Details

Application Notes: ELISA: 1:10000, WB: 1:500 - 1:2000, IHC: 1:200 - 1:1000, ICC: 1:200 - 1:1000

Restrictions: For Research Use only

Handling

Format: Liquid

Buffer: Ascitic fluid containing 0.03 % sodium azide.

Preservative: Sodium azide

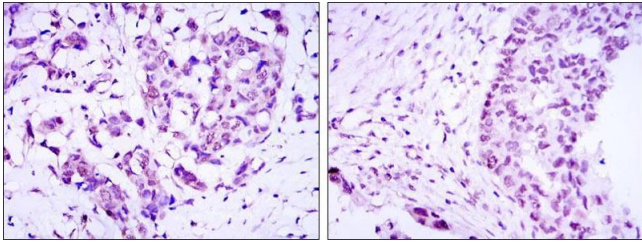
Precaution of Use: This product contains Sodium azide: a POISONOUS AND HAZARDOUS SUBSTANCE which should be handled by trained staff only.

Storage: 4 °C/-20 °C

Storage Comment: 4°C, -20°C for long term storage

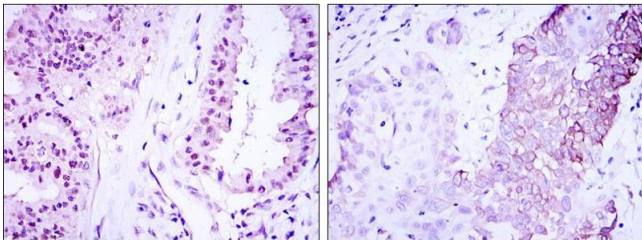
Publications

Product cited in: Wang, Wu, Zhou, Guo, Zheng, Wang, Bi, Liu, Zhou, Guo, Sha: "Mapping of the N-linked glycoproteome of human spermatozoa." in: **Journal of proteome research**, Vol. 12, Issue 12, pp. 5750-9, (2013) ([PubMed](#)).



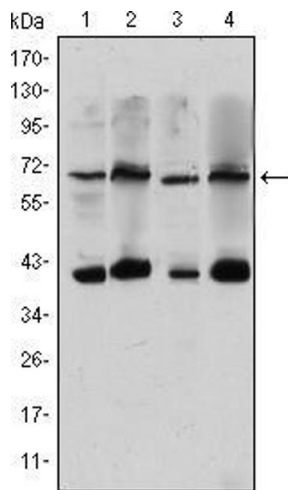
Immunohistochemistry

Image 1. Immunohistochemical analysis of paraffin-embedded breast cancer (left) and ovarian cancer (right) using CRTC3 mouse mAb with DAB staining.



Immunohistochemistry

Image 2. Immunohistochemical analysis of paraffin-embedded lung cancer (left) and esophagus cancer (right) using CRTC3 mouse mAb with DAB staining.



Western Blotting

Image 3. Western blot analysis using CRTC3 mouse mAb against Hela (1), Jurkat (2), Cos7 (3) and MCF-7 (4) cell lysate.

Please check the [product details page](#) for more images. Overall 5 images are available for ABIN969068.