

Datasheet for ABIN969080
anti-KRT8 antibody (AA 391-483)

4 Images

1 Publication

[Go to Product page](#)

Overview

Quantity:	100 µL
Target:	KRT8
Binding Specificity:	AA 391-483
Reactivity:	Human
Host:	Mouse
Clonality:	Monoclonal
Application:	Western Blotting (WB), Immunohistochemistry (IHC), ELISA, Immunocytochemistry (ICC)

Product Details

Immunogen:	Purified recombinant fragment of human Cytokeratin (aa391-483) expressed in E. coli.
Clone:	8A5D12
Isotype:	IgG1
Purification:	purified

Target Details

Target:	KRT8
Alternative Name:	Cytokeratin 8 (KRT8 Products)
Background:	Description: Cytokeratin 8, also known as CK8, KRT8, K8. Entrez Protein NP_002264. It is a member of the type II keratin family. Type I and type II keratins heteropolymerize to form intermediate-sized filaments in the cytoplasm of epithelial cells. It typically dimerizes with keratin 18 to form an intermediate filament in simple single-layered epithelial cells. This protein

Target Details

plays a role in maintaining cellular structural integrity and also functions in signal transduction and cellular differentiation. Mutations in this gene cause cryptogenic cirrhosis.

Aliases: CK8, CYK8, K2C8, KRT8

Molecular Weight: 54 kDa

Gene ID: 3856

HGNC: 3856

Application Details

Application Notes: ELISA: 1:10000, WB: 1:500 - 1:2000, IHC: 1:200 - 1:1000, ICC: 1:200 - 1:1000

Restrictions: For Research Use only

Handling

Format: Liquid

Buffer: Ascitic fluid containing 0.03 % sodium azide.

Preservative: Sodium azide

Precaution of Use: This product contains Sodium azide: a POISONOUS AND HAZARDOUS SUBSTANCE which should be handled by trained staff only.

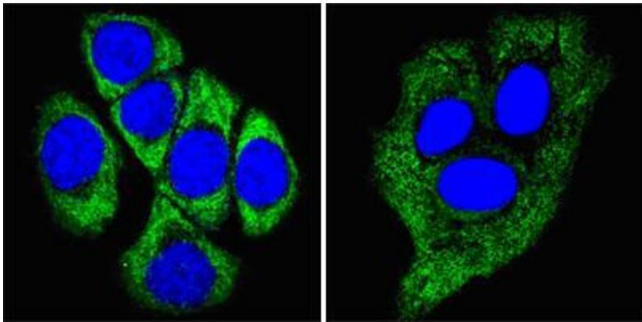
Storage: 4 °C/-20 °C

Storage Comment: 4°C, -20°C for long term storage

Publications

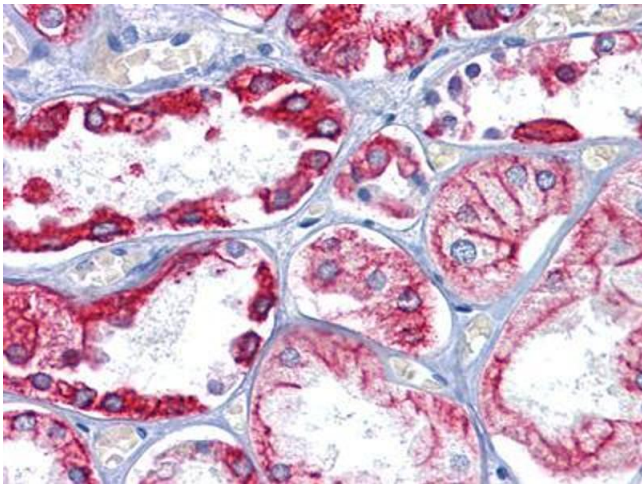
Product cited in: Golledge, Biros, Clancy, Cooper, Palmer, Norman: "A single-nucleotide polymorphism in the gene encoding osteoprotegerin is associated with diastolic blood pressure in older men." in: **American journal of hypertension**, Vol. 22, Issue 11, pp. 1167-70, (2009) ([PubMed](#)).

Talmud, Drenos, Shah, Shah, Palmen, Verzilli, Gaunt, Pallas, Lovering, Li, Casas, Sofat, Kumari, Rodriguez, Johnson, Newhouse, Dominiczak, Samani, Caulfield, Sever, Stanton, Shields, Padmanabhan et al.: "Gene-centric association signals for lipids and apolipoproteins identified via the HumanCVD BeadChip. ..." in: **American journal of human genetics**, Vol. 85, Issue 5, pp. 628-42, (2009) ([PubMed](#)).



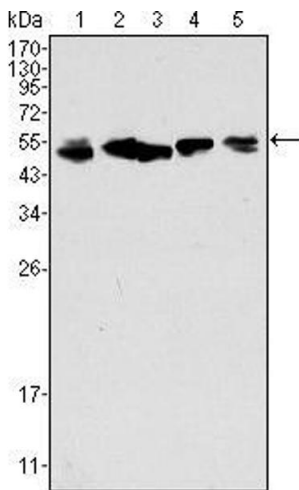
Immunofluorescence

Image 1. Confocal immunofluorescence analysis of methanol-fixed ECA109 cells (left) and HepG2 cells (right) using CK8 mouse mAb (green), showing cytoplasmic localization. Blue: DRAQ5 fluorescent DNA dye.



Immunohistochemistry

Image 2. Immunohistochemical analysis of paraffin-embedded human Kidney tissues using CK8 mouse mAb



Western Blotting

Image 3. Western blot analysis using CK8 mouse mAb against A549 (1), Hela (2), MCF-7 (3), A431 (4) and HepG2 (5) cell lysate.

Please check the [product details page](#) for more images. Overall 4 images are available for ABIN969080.