



Datasheet for ABIN969090

anti-EEF2 antibody



[Go to Product page](#)

5 Images

2 Publications

Overview

Quantity:	100 µL
Target:	EEF2
Reactivity:	Human
Host:	Mouse
Clonality:	Monoclonal
Application:	Western Blotting (WB), ELISA, Immunohistochemistry (IHC), Immunocytochemistry (ICC)

Product Details

Immunogen:	Purified recombinant fragment of human EEF2 expressed in E. coli.
Clone:	5B6
Isotype:	IgG1
Purification:	purified

Target Details

Target:	EEF2
Alternative Name:	EEF2 (EEF2 Products)
Background:	<p>Description: This gene encodes a member of the GTP-binding translation elongation factor family. This protein is an essential factor for protein synthesis. It promotes the GTP-dependent translocation of the nascent protein chain from the A-site to the P-site of the ribosome. This protein is completely inactivated by EF-2 kinase phosphorylation. (provided by RefSeq)</p> <p>Aliases: EF2, EEF-2, EEF2</p>

Target Details

Molecular Weight: 95 kDa

Gene ID: 1938

HGNC: 1938

Pathways: [AMPK Signaling](#)

Application Details

Application Notes: ELISA: 1:10000, WB: 1:500 - 1:2000, IHC: 1:200 - 1:1000, ICC: 1:200 - 1:1000

Restrictions: For Research Use only

Handling

Format: Liquid

Buffer: Ascitic fluid containing 0.03 % sodium azide.

Preservative: Sodium azide

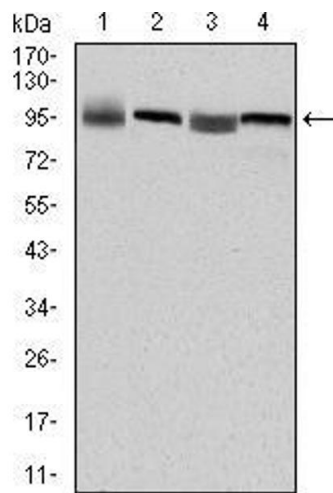
Precaution of Use: This product contains Sodium azide: a POISONOUS AND HAZARDOUS SUBSTANCE which should be handled by trained staff only.

Storage: 4 °C/-20 °C

Storage Comment: 4°C, -20°C for long term storage

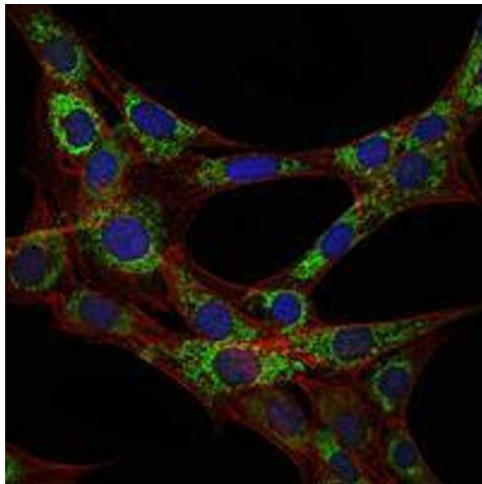
Publications

Product cited in: Trilck, Peter, Zheng, Frank, Dobrenis, Mascher, Rolfs, Frech: "Diversity of glycosphingolipid GM2 and cholesterol accumulation in NPC1 patient-specific iPSC-derived neurons." in: **Brain research**, Vol. 1657, pp. 52-61, (2016) ([PubMed](#)).



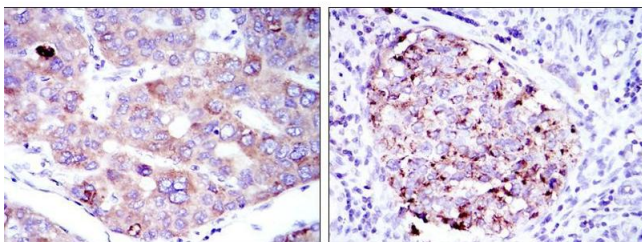
Western Blotting

Image 1. Western blot analysis using EEF2 mouse mAb against HepG2 (1), HeLa (2), HEK293 (3) and A431 (4) cell lysate.



Immunofluorescence

Image 2. Immunofluorescence analysis of 3T3-L1 cells using EEF2 mouse mAb (green). Blue: DRAQ5 fluorescent DNA dye. Red: Actin filaments have been labeled with Alexa Fluor-555 phalloidin.



Immunohistochemistry

Image 3. Immunohistochemical analysis of paraffin-embedded liver cancer tissues (left) and kidney cancer tissues (right) using EEF2 mouse mAb with DAB staining.

Please check the [product details page](#) for more images. Overall 5 images are available for ABIN969090.