

Datasheet for ABIN969095

anti-ELK1 antibody[Go to Product page](#)**2** Images**1** Publication

Overview

Quantity:	100 µL
Target:	ELK1
Reactivity:	Human
Host:	Mouse
Clonality:	Monoclonal
Application:	Western Blotting (WB), Immunohistochemistry (IHC), ELISA

Product Details

Immunogen:	Purified recombinant fragment of ELK1 expressed in E. coli.
Clone:	3H6D12
Isotype:	IgG1
Purification:	purified

Target Details

Target:	ELK1
Alternative Name:	ELK1 (ELK1 Products)
Background:	Description: The transcription factor ELK1 is a family of member of ETS oncogene family and of the ternary complex factor (TCF) subfamily, which is located on chromosome Xp11.2 and stimulates transcription. binds to purine-rich DNA sequences. Proteins of the TCF subfamily form a ternary complex by binding to the the serum response factor and the serum response element in the promoter of the c-fos proto-oncogene. The protein encoded by this gene is a

Target Details

nuclear target for the ras-raf-MAPK signaling cascade. Elk1 is phosphorylated by MAP kinase pathways at a cluster of S/T motifs at its C terminus, It appears to be a direct target of activated MAP kinase. Biochemical studies indicate that Elk1 is a good substrate for MAP kinase, the kinetics of Elk1 phosphorylation and activation correlate with MAP kinase activity, and interfering mutants of MAP kinase block Elk1 activation in vivo. More recent studies have shown that Elk1 is also a target of the Stress Activated Kinase SAPK/JNK. Phosphorylation of Elk1 has also been implicated in synaptic plasticity in the adult hippocampus.

Aliases: ELK1

Gene ID: 2002

HGNC: 2002

Pathways: [MAPK Signaling](#), [Neurotrophin Signaling Pathway](#), [Activation of Innate immune Response](#), [Toll-Like Receptors Cascades](#), [Signaling of Hepatocyte Growth Factor Receptor](#), [BCR Signaling](#)

Application Details

Application Notes: ELISA: 1:10000, WB: 1:500 - 1:2000, IHC: 1:200 - 1:1000

Restrictions: For Research Use only

Handling

Format: Liquid

Buffer: Ascitic fluid containing 0.03 % sodium azide.

Preservative: Sodium azide

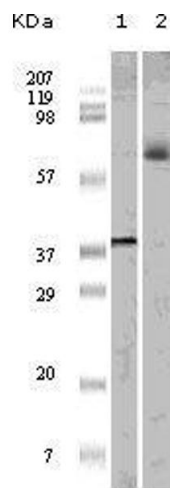
Precaution of Use: This product contains Sodium azide: a POISONOUS AND HAZARDOUS SUBSTANCE which should be handled by trained staff only.

Storage: 4 °C/-20 °C

Storage Comment: 4°C, -20°C for long term storage

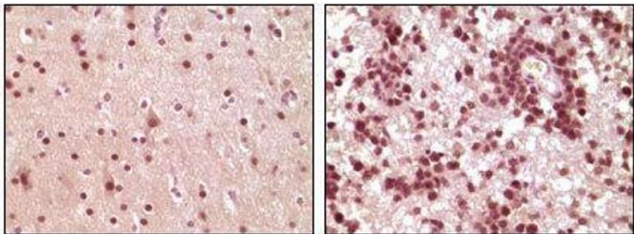
Publications

Product cited in: Trilck, Peter, Zheng, Frank, Dobrenis, Mascher, Rolfs, Frech: "Diversity of glycosphingolipid GM2 and cholesterol accumulation in NPC1 patient-specific iPSC-derived neurons." in: **Brain research**, Vol. 1657, pp. 52-61, (2016) ([PubMed](#)).



Western Blotting

Image 1. Western blot analysis using ELK1 mouse mAb against truncated ELK1 recombinant protein (1) and K562 cell lysate (2).



Immunohistochemistry

Image 2. Immunohistochemical analysis of paraffin-embedded human brain tumor tissue, showing nuclear and cytoplasmic localization using ELK1 mouse mAb with DAB staining.