



[Go to Product page](#)

Datasheet for ABIN969171
anti-Glucagon antibody

1 Image

1 Publication

Overview

Quantity:	100 µL
Target:	Glucagon (GCG)
Reactivity:	Human
Host:	Mouse
Clonality:	Monoclonal
Application:	Western Blotting (WB), ELISA

Product Details

Immunogen:	Purified recombinant fragment of human GCG expressed in E. coli.
Clone:	2F9
Isotype:	IgG1
Purification:	purified

Target Details

Target:	Glucagon (GCG)
Alternative Name:	GCG (GCG Products)
Background:	<p>Description: The protein encoded by this gene is actually a preproprotein that is cleaved into four distinct mature peptides. One of these, glucagon, is a pancreatic hormone that counteracts the glucose-lowering action of insulin by stimulating glycogenolysis and gluconeogenesis.</p> <p>Glucagon is a ligand for a specific G-protein linked receptor whose signalling pathway controls cell proliferation. Two of the other peptides are secreted from gut endocrine cells and promote</p>

Target Details

nutrient absorption through distinct mechanisms. Finally, the fourth peptide is similar to glicentin, an active enteroglucagon. Tissue specificity: Glucagon is secreted in the A cells of the islets of Langerhans. GLP-1, GLP-2, oxyntomodulin and glicentin are secreted from enteroendocrine cells throughout the gastrointestinal tract. GLP1 and GLP2 are also secreted in selected neurons in the brain.

Aliases: GLP1, GLP2, GRPP, GCG

Molecular Weight: 21 kDa

Gene ID: 2641

HGNC: 2641

Pathways: [Positive Regulation of Peptide Hormone Secretion](#), [Peptide Hormone Metabolism](#), [cAMP Metabolic Process](#), [Regulation of Carbohydrate Metabolic Process](#), [Feeding Behaviour](#), [Negative Regulation of intrinsic apoptotic Signaling](#)

Application Details

Application Notes: ELISA: 1:10000, WB: 1:500 - 1:2000

Restrictions: For Research Use only

Handling

Format: Liquid

Buffer: Ascitic fluid containing 0.03 % sodium azide.

Preservative: Sodium azide

Precaution of Use: This product contains Sodium azide: a POISONOUS AND HAZARDOUS SUBSTANCE which should be handled by trained staff only.

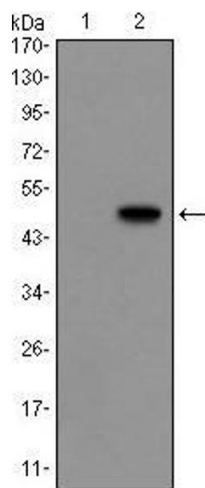
Storage: 4 °C/-20 °C

Storage Comment: 4°C, -20°C for long term storage

Publications

Product cited in: Jan, Adolfsson, Allaman, Buccarello, Magistretti, Pfeifer, Muhs, Lashuel: "Abeta42 neurotoxicity is mediated by ongoing nucleated polymerization process rather than by discrete Abeta42 species." in: **The Journal of biological chemistry**, Vol. 286, Issue 10, pp. 8585-96, (2011) ([PubMed](#)).

Deshmukh, Salehzadeh, Metayer-Coustard, Fahlman, Nair, Al-Khalili: "Post-transcriptional gene silencing of ribosomal protein S6 kinase 1 restores insulin action in leucine-treated skeletal muscle." in: **Cellular and molecular life sciences : CMLS**, Vol. 66, Issue 8, pp. 1457-66, (2009) ([PubMed](#)).



Western Blotting

Image 1. Western blot analysis using GCG mAb against HEK293 (1) and GCG(AA: 1-180)-hlgGfc transfected HEK293 (2) cell lysate.