

Datasheet for ABIN969176

anti-GPI antibody

4 Images

3 Publications

[Go to Product page](#)

Overview

Quantity:	100 µL
Target:	GPI
Reactivity:	Human
Host:	Mouse
Clonality:	Monoclonal
Conjugate:	This GPI antibody is un-conjugated
Application:	Western Blotting (WB), ELISA, Immunohistochemistry (IHC), Immunocytochemistry (ICC)

Product Details

Immunogen:	Purified recombinant fragment of human GPI expressed in E. coli.
Clone:	1B7D7
Isotype:	IgG1
Purification:	purified

Target Details

Target:	GPI
Alternative Name:	Glucose-6-phosphate isomerase (GPI Products)
Target Type:	Viral Protein
Background:	Description: Glucose-6-phosphate isomerase, or phosphoglucose isomerase, also known as GPI. It belongs to the GPI family whose members encode multifunctional phosphoglucose

Target Details

isomerase proteins involved in energy pathways and it is an enzyme that catalyzes the conversion of glucose-6-phosphate into fructose 6-phosphate in the second step of glycolysis. The protein functions in different capacities inside and outside the cell. In the cytoplasm, the gene product is involved in glycolysis and gluconeogenesis, while outside the cell it functions as a neurotrophic factor for spinal and sensory neurons. Defects in GPI are the cause of nonspherocytic hemolytic anemia and a severe enzyme deficiency can be associated with hydrops fetalis, immediate neonatal death and neurological impairment.

Aliases: AMF, NLK, PGI, PHI, GNPI, SA-36, GPI

Molecular Weight:	63 kDa
-------------------	--------

Gene ID:	2821
----------	------

HGNC:	2821
-------	------

Application Details

Application Notes:	ELISA: 1:10000, WB: 1:500 - 1:2000, IHC: 1:200 - 1:1000, ICC: 1:200 - 1:1000
--------------------	--

Restrictions:	For Research Use only
---------------	-----------------------

Handling

Format:	Liquid
---------	--------

Buffer:	Ascitic fluid containing 0.03 % sodium azide.
---------	---

Preservative:	Sodium azide
---------------	--------------

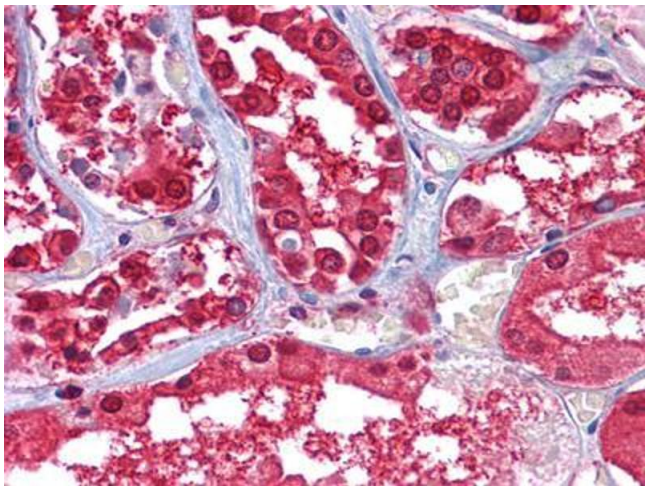
Precaution of Use:	This product contains Sodium azide: a POISONOUS AND HAZARDOUS SUBSTANCE which should be handled by trained staff only.
--------------------	--

Storage:	4 °C/-20 °C
----------	-------------

Storage Comment:	4°C, -20°C for long term storage
------------------	----------------------------------

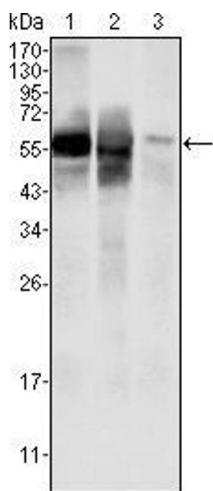
Publications

Product cited in:	Jacques, Pereira, Maia, Cuzzi, Ramos-e-Silva: "Expression of cytokeratins 10, 13, 14 and 19 in oral lichen planus." in: Journal of oral science , Vol. 51, Issue 3, pp. 355-65, (2009) (PubMed).
-------------------	---



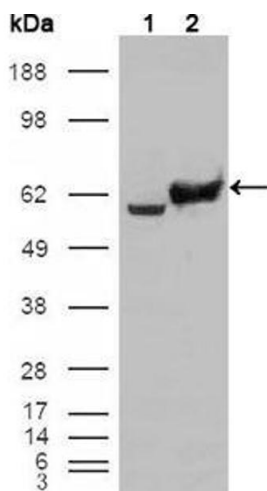
Immunohistochemistry

Image 1. Immunohistochemical analysis of paraffin-embedded human Kidney tissues using GPI mouse mAb.



Western Blotting

Image 2. Western blot analysis using GPI mouse mAb against HepG2 (1) , SMMC-7721 (2) cell lysate and rat liver tissues lysate (3).



Western Blotting

Image 3. Western blot analysis using GPI mouse mAb against HEK293T cells transfected with the pCMV6-ENTRY control (1) and pCMV6-ENTRY GPI cDNA (2).

Please check the [product details page](#) for more images. Overall 4 images are available for ABIN969176.