



Datasheet for ABIN969219

anti-ISL1 antibody



[Go to Product page](#)

3 Images

1 Publication

Overview

Quantity:	100 µL
Target:	ISL1
Reactivity:	Human
Host:	Mouse
Clonality:	Monoclonal
Conjugate:	This ISL1 antibody is un-conjugated
Application:	Western Blotting (WB), ELISA, Immunohistochemistry (IHC), Immunocytochemistry (ICC)

Product Details

Immunogen:	Purified recombinant fragment of human ISL1 expressed in E. coli.
Clone:	1H9
Isotype:	IgG1
Purification:	purified

Target Details

Target:	ISL1
Alternative Name:	ISL1 (ISL1 Products)
Background:	Description: ISL1 (ISL1 transcription factor, LIM/homeodomain) is a member of the LIM/homeodomain family of transcription factors. It binds to the enhancer region of the insulin gene, among others, and may play an important role in regulating insulin gene expression. It is central to the development of pancreatic cell lineages and may also be required for motor

Target Details

neuron generation. Islet-1 expression defines cardiac progenitor cell populations and is required for normal cardiac development and asymmetry. Mutations in this gene have been associated with maturity-onset diabetes of the young.

Aliases: Isl-1, ISLET1

Molecular Weight: 39 kDa

Gene ID: 3670

HGNC: 3670

Pathways: [Positive Regulation of Peptide Hormone Secretion](#), [Intracellular Steroid Hormone Receptor Signaling Pathway](#), [Peptide Hormone Metabolism](#), [Regulation of Intracellular Steroid Hormone Receptor Signaling](#), [Nuclear Hormone Receptor Binding](#), [Chromatin Binding](#)

Application Details

Application Notes: ELISA: 1:10000, WB: 1:500 - 1:2000, IHC: 1:200 - 1:1000, ICC: 1:200 - 1:1000

Restrictions: For Research Use only

Handling

Format: Liquid

Buffer: Ascitic fluid containing 0.03 % sodium azide.

Preservative: Sodium azide

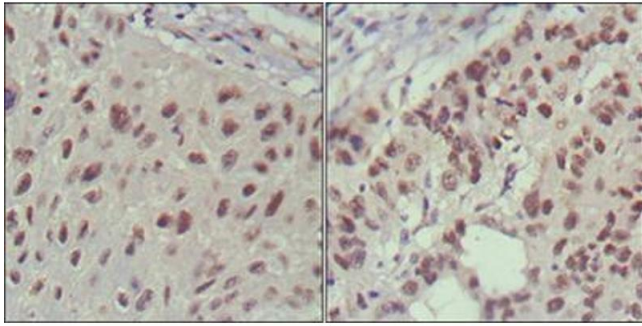
Precaution of Use: This product contains Sodium azide: a POISONOUS AND HAZARDOUS SUBSTANCE which should be handled by trained staff only.

Storage: 4 °C/-20 °C

Storage Comment: 4°C, -20°C for long term storage

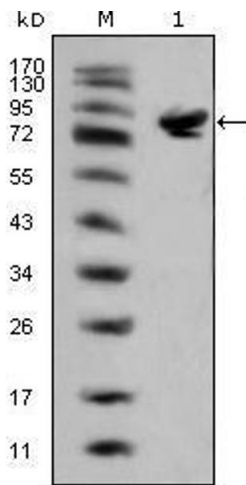
Publications

Product cited in: Jacques, Pereira, Maia, Cuzzi, Ramos-e-Silva: "Expression of cytokeratins 10, 13, 14 and 19 in oral lichen planus." in: **Journal of oral science**, Vol. 51, Issue 3, pp. 355-65, (2009) ([PubMed](#)).



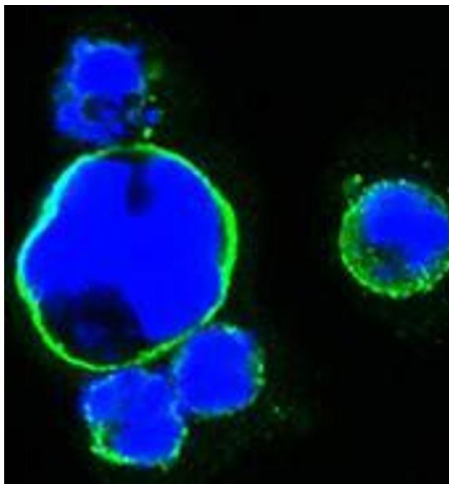
Immunohistochemistry

Image 1. Immunohistochemical analysis of paraffin-embedded human lung cancer (left) and cervical carcinoma (right), showing nuclear localization using ISL1 mouse mAb with DAB staining.



Western Blotting

Image 2. Western blot analysis using ISL1 mouse mAb against full-length ISL1 (aa1-349)-hlgGFc transfected HEK293 cell lysate(1).



Immunofluorescence

Image 3. Confocal immunofluorescence analysis of HEK293 cells transfected with full-length ISL1-hlgGFc using ISL1 mouse mAb (green). Blue: DRAQ5 fluorescent DNA dye.