

Datasheet for ABIN969236

**anti-KIF22 antibody**

## 6 Images

[Go to Product page](#)

## Overview

Quantity:	100 µL
Target:	KIF22
Reactivity:	Human
Host:	Mouse
Clonality:	Monoclonal
Application:	Western Blotting (WB), ELISA, Immunohistochemistry (IHC), Flow Cytometry (FACS)

## Product Details

Immunogen:	Purified recombinant fragment of human KID expressed in E. coli.
Clone:	1-00E-03
Isotype:	IgG1
Purification:	purified

## Target Details

Target:	KIF22
Alternative Name:	KID ( <a href="#">KIF22 Products</a> )
Background:	Description: The protein encoded by this gene is a member of kinesin-like protein family. This family of proteins are microtubule-dependent molecular motors that transport organelles within cells and move chromosomes during cell division. The C-terminal half of this protein has been shown to bind DNA. Studies with the Xenopus homolog suggests its essential role in metaphase chromosome alignment and maintenance.

## Target Details

Aliases: KIF22, KID, OBP, KNSL4, OBP-1, OBP-2, A-328A3.2

Molecular Weight: 73 kDa

Gene ID: 3835

HGNC: 3835

## Application Details

Application Notes: ELISA: 1:10000, WB: 1:500 - 1:2000, IHC: 1:200 - 1:1000, FCM: 1:200 - 1:400

Restrictions: For Research Use only

## Handling

Format: Liquid

Buffer: Ascitic fluid containing 0.03 % sodium azide.

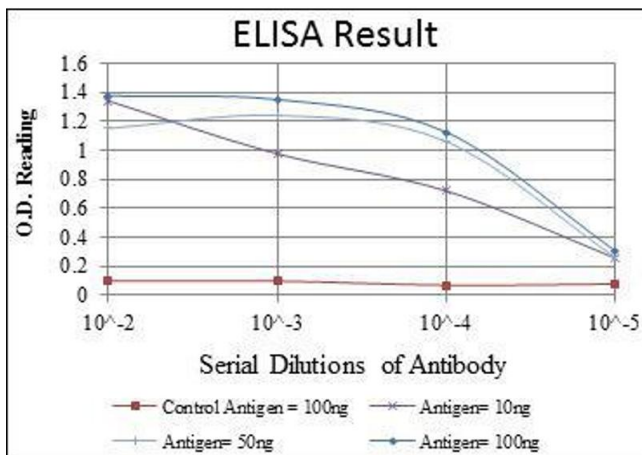
Preservative: Sodium azide

Precaution of Use: This product contains Sodium azide: a POISONOUS AND HAZARDOUS SUBSTANCE which should be handled by trained staff only.

Storage: 4 °C/-20 °C

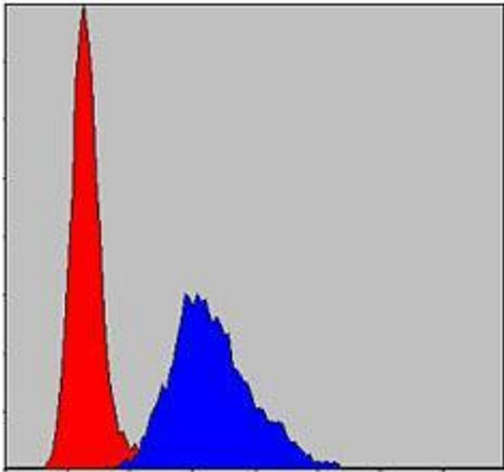
Storage Comment: 4°C, -20°C for long term storage

## Images



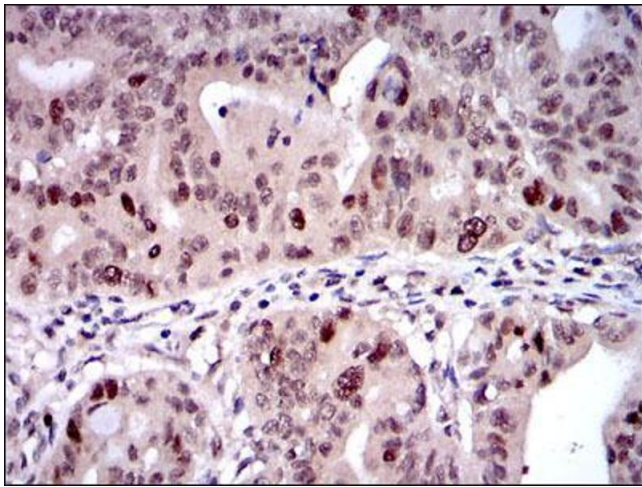
### ELISA

**Image 1.** Red: Control Antigen (100 ng), Purple: Antigen (10 ng), Green: Antigen (50 ng), Blue: Antigen (100 ng),



### Flow Cytometry

**Image 2.** Flow cytometric analysis of NIH/3T3 cells using KID mouse mAb (blue) and negative control (red).



### Immunohistochemistry

**Image 3.** Immunohistochemical analysis of paraffin-embedded rectum cancer tissues using KID mouse mAb with DAB staining.

Please check the [product details page](#) for more images. Overall 6 images are available for ABIN969236.