



[Go to Product page](#)

Datasheet for ABIN969240

anti-KLF4 antibody

3 Images

2 Publications

Overview

Quantity:	100 µL
Target:	KLF4
Reactivity:	Human
Host:	Mouse
Clonality:	Monoclonal
Application:	Western Blotting (WB), ELISA, Immunohistochemistry (IHC), Immunocytochemistry (ICC)

Product Details

Immunogen:	Purified recombinant fragment of human KLF4 expressed in E. coli.
Clone:	1-00E-06
Isotype:	IgG1
Purification:	purified

Target Details

Target:	KLF4
Alternative Name:	KLF4 (KLF4 Products)
Background:	<p>Description: Kruppel-like factor 4 (gut),endothelial Kruppel-like zinc finger protein. May act as a transcriptional activator. Binds the CACCC core sequence. May be involved in the differentiation of epithelial cells and may also function in the development of the skeleton and kidney. KLF4 is highly expressed in the epithelial cells of the skin and the gastrointestinal tract.</p> <p>Aliases: EZF, GKLF, KLF4</p>

Target Details

Molecular Weight: 54 kDa

Gene ID: 9314

HGNC: 9314

Pathways: [Peptide Hormone Metabolism, Stem Cell Maintenance](#)

Application Details

Application Notes: ELISA: 1:10000, WB: 1:500 - 1:2000, IHC: 1:200 - 1:1000, ICC: 1:200 - 1:1000

Restrictions: For Research Use only

Handling

Format: Liquid

Buffer: Ascitic fluid containing 0.03 % sodium azide.

Preservative: Sodium azide

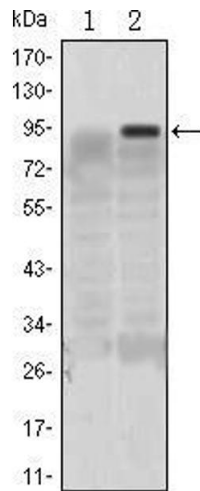
Precaution of Use: This product contains Sodium azide: a POISONOUS AND HAZARDOUS SUBSTANCE which should be handled by trained staff only.

Storage: 4 °C/-20 °C

Storage Comment: 4°C, -20°C for long term storage

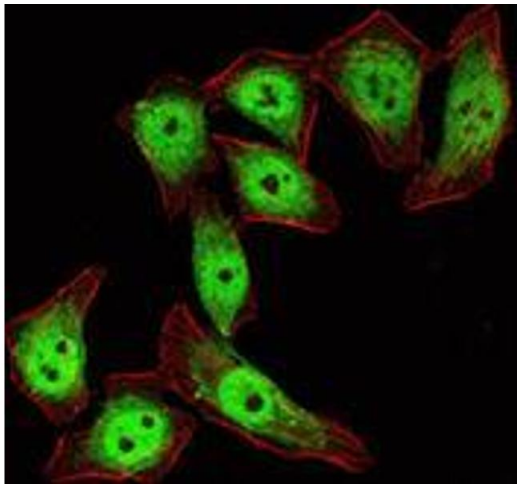
Publications

Product cited in: Trilck, Peter, Zheng, Frank, Dobrenis, Mascher, Rolfs, Frech: "Diversity of glycosphingolipid GM2 and cholesterol accumulation in NPC1 patient-specific iPSC-derived neurons." in: **Brain research**, Vol. 1657, pp. 52-61, (2016) ([PubMed](#)).



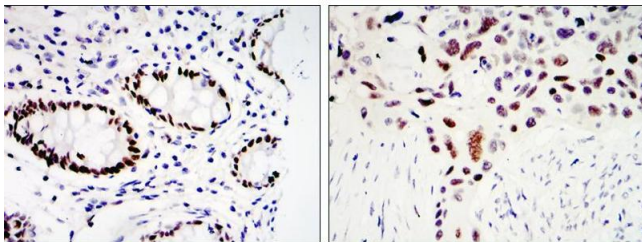
Western Blotting

Image 1. Western blot analysis using KLF4 mAb against HEK293 (1) and KLF4(AA: 2-180)-hlgGFc transfected HEK293 (2) cell lysate.



Immunofluorescence

Image 2. Immunofluorescence analysis of ECA109 cells using KLF4 mouse mAb (green). Red: Actin filaments have been labeled with Alexa Fluor-555 phalloidin.



Immunohistochemistry

Image 3. Immunohistochemical analysis of paraffin-embedded colon cancer tissues (left) and lung cancer tissues (right) using KLF4 mouse mAb with DAB staining