



Datasheet for ABIN969242  
**anti-KLHL11 antibody**



[Go to Product page](#)

3 Images

2 Publications

### Overview

|              |  |
|--------------|--|
| Quantity:    | 100 µL   |
| Target:      | KLHL11   |
| Reactivity:  | Human  |
| Host:        | Mouse  |
| Clonality:   | Monoclonal   |
| Conjugate:   | This KLHL11 antibody is un-conjugated  |
| Application: | Western Blotting (WB), ELISA, Flow Cytometry (FACS), Immunocytochemistry (ICC) |

### Product Details

|               |   |
|---------------|---|
| Immunogen:    | Purified recombinant fragment of human KLHL11 expressed in E. coli. |
| Clone:        | 1B9A8   |
| Isotype:      | IgG1  |
| Purification: | purified  |

### Target Details

|                   |   |
|-------------------|---|
| Target:           | KLHL11  |
| Alternative Name: | KLHL11 ( <a href="#">KLHL11 Products</a> )  |
| Background:       | Description: Kelch-like protein 11, Subcellular location Secreted.<br>Aliases: FLJ10572, KLHL11 |
| Molecular Weight: | 80 kDa  |

## Target Details

Gene ID: 55175

HGNC: 55175

## Application Details

Application Notes: ELISA: 1:10000, WB: 1:500 - 1:2000, ICC: 1:200 - 1:1000, FCM: 1:200 - 1:400

Restrictions: For Research Use only

## Handling

Format: Liquid

Buffer: Ascitic fluid containing 0.03 % sodium azide.

Preservative: Sodium azide

Precaution of Use: This product contains Sodium azide: a POISONOUS AND HAZARDOUS SUBSTANCE which should be handled by trained staff only.

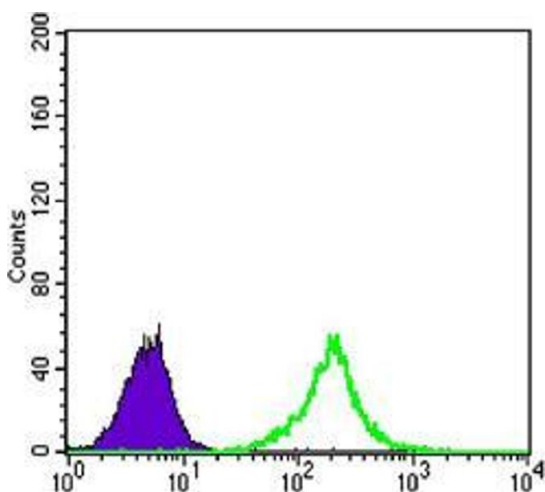
Storage: 4 °C/-20 °C

Storage Comment: 4°C, -20°C for long term storage

## Publications

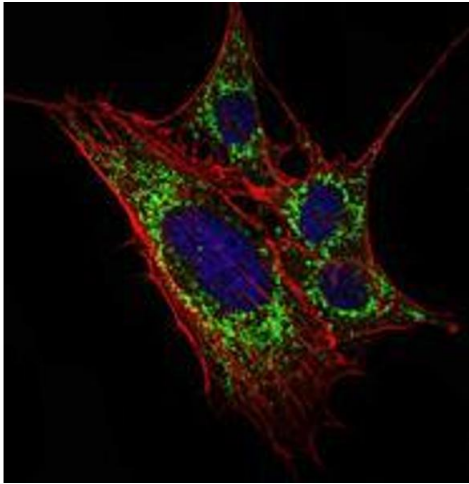
Product cited in: Jacques, Pereira, Maia, Cuzzi, Ramos-e-Silva: "Expression of cytokeratins 10, 13, 14 and 19 in oral lichen planus." in: **Journal of oral science**, Vol. 51, Issue 3, pp. 355-65, (2009) ([PubMed](#)).

## Images



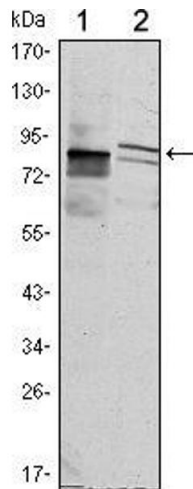
### Flow Cytometry

**Image 1.** Flow cytometric analysis of K562 cells using KLHL11 mouse mAb (green) and negative control (purple).



### Immunofluorescence

**Image 2.** Immunofluorescence analysis of 3T3-L1 cells using KLHL11 mouse mAb (green). Blue: DRAQ5 fluorescent DNA dye. Red: Actin filaments have been labeled with Alexa Fluor-555 phalloidin.



### Western Blotting

**Image 3.** Western blot analysis using KLHL11 mouse mAb against HeLa (1) and MCF-7 (2) cell lysate.