



Datasheet for ABIN969243
anti-KLHL11 antibody



[Go to Product page](#)

3 Images

Overview

Quantity:	100 µL
Target:	KLHL11
Reactivity:	Human
Host:	Mouse
Clonality:	Monoclonal
Conjugate:	This KLHL11 antibody is un-conjugated
Application:	Western Blotting (WB), ELISA, Immunohistochemistry (IHC), Immunocytochemistry (ICC)

Product Details

Immunogen:	Purified recombinant fragment of human KLHL11 expressed in E. coli. ,
Clone:	1B9C1
Isotype:	IgG1
Purification:	purified

Target Details

Target:	KLHL11
Alternative Name:	KLHL11 (KLHL11 Products)
Background:	Description: Kelch-like protein 11, Subcellular location Secreted. Aliases: FLJ10572, KLHL11
Molecular Weight:	80 kDa

Target Details

Gene ID: 55175

HGNC: 55175

Application Details

Application Notes: ELISA: 1:10000, WB: 1:500 - 1:2000, IHC: 1:200 - 1:1000, ICC: 1:200 - 1:1000

Restrictions: For Research Use only

Handling

Format: Liquid

Buffer: Ascitic fluid containing 0.03 % sodium azide.

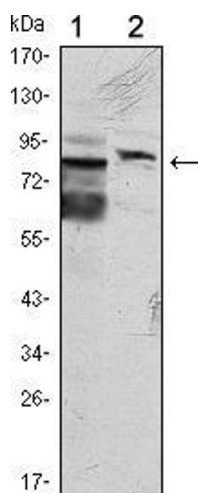
Preservative: Sodium azide

Precaution of Use: This product contains Sodium azide: a POISONOUS AND HAZARDOUS SUBSTANCE which should be handled by trained staff only.

Storage: 4 °C/-20 °C

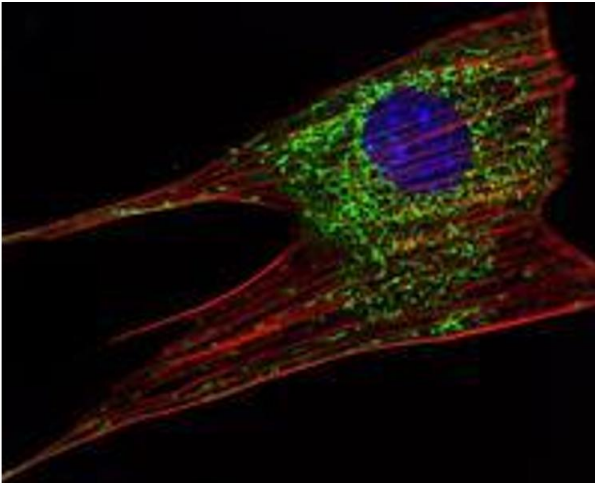
Storage Comment: 4°C, -20°C for long term storage

Images



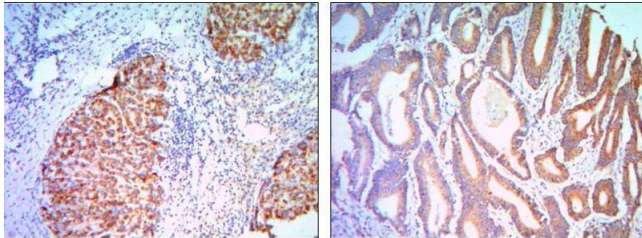
Western Blotting

Image 1. Western blot analysis using KLHL11 mouse mAb against HeLa (1) and MCF-7 (2) cell lysate.



Immunofluorescence

Image 2. Immunofluorescence analysis of NIH/3T3 cells using KLHL11 mouse mAb (green). Blue: DRAQ5 fluorescent DNA dye. Red: Actin filaments have been labeled with Alexa Fluor-555 phalloidin.



Immunohistochemistry

Image 3. Immunohistochemical analysis of paraffin-embedded liver cancer (right) and colon cancer tissues (left) using KLHL11 mouse mAb with DAB staining.