

Datasheet for ABIN969247
anti-KLHL22 antibody

2 Images

[Go to Product page](#)

Overview

Quantity:	100 µL
Target:	KLHL22
Reactivity:	Human
Host:	Mouse
Clonality:	Monoclonal
Conjugate:	This KLHL22 antibody is un-conjugated
Application:	ELISA, Western Blotting (WB), Immunocytochemistry (ICC)

Product Details

Immunogen:	Purified recombinant fragment of human KLHL22 expressed in E. coli.
Clone:	7B10
Isotype:	IgG1
Purification:	purified

Target Details

Target:	KLHL22
Alternative Name:	KLHL22 (KLHL22 Products)
Background:	Description: KLHL22 (kelch-like protein 22) is a 634 amino acid protein that is related to the Drosophilakelch protein, which is required to maintain Actin organization in ovarian ring canals. Mutations affecting Kelch function result in the failure of Kelch to associate with the ring canals and subsequent female sterility. Human KLHL22 protein contains six kelch repeats and one

Target Details

BTB (POZ) domain. The BTB (Broad-Complex, Tramtrack and Bric a brac) domain, also known as the POZ (Poxvirus and Zinc finger) domain, is an N-terminal homodimerization domain that contains multiple copies of kelch repeats and/or C2H2-type zinc fingers. Proteins that contain BTB domains are thought to be involved in transcriptional regulation via control of chromatin structure and function. There are two isoforms of KLHL22 that are produced as a result of alternative splicing events.

Aliases: KELCHL, KLHL22

Molecular Weight:	72 kDa
-------------------	--------

Gene ID:	84861
----------	-------

HGNC:	84861
-------	-------

Application Details

Application Notes:	ELISA: 1:10000, WB: 1:500 - 1:2000, ICC: 1:200 - 1:1000
--------------------	---

Restrictions:	For Research Use only
---------------	-----------------------

Handling

Format:	Liquid
---------	--------

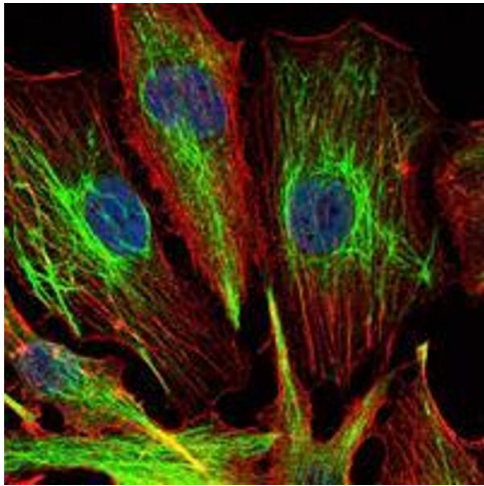
Buffer:	Ascitic fluid containing 0.03 % sodium azide.
---------	---

Preservative:	Sodium azide
---------------	--------------

Precaution of Use:	This product contains Sodium azide: a POISONOUS AND HAZARDOUS SUBSTANCE which should be handled by trained staff only.
--------------------	--

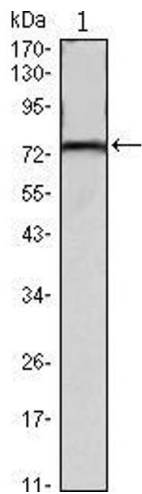
Storage:	4 °C/-20 °C
----------	-------------

Storage Comment:	4°C, -20°C for long term storage
------------------	----------------------------------



Immunofluorescence

Image 1. Immunofluorescence analysis of U251 cells using KLHL22 mouse mAb (green). Blue: DRAQ5 fluorescent DNA dye. Red: Actin filaments have been labeled with Alexa Fluor-555 phalloidin.



Western Blotting

Image 2. Western blot analysis using KLHL22 mouse mAb against mouse brain tissues lysate.