



Datasheet for ABIN969248  
**anti-KLHL25 antibody**



[Go to Product page](#)

1 Image

2 Publications

### Overview

Quantity:	100 µL
Target:	KLHL25
Reactivity:	Human
Host:	Mouse
Clonality:	Monoclonal
Conjugate:	This KLHL25 antibody is un-conjugated
Application:	Western Blotting (WB), ELISA

### Product Details

Immunogen:	Purified recombinant fragment of human KLHL25 expressed in E. coli.
Clone:	1B7
Isotype:	IgG2b
Purification:	purified

### Target Details

Target:	KLHL25
Alternative Name:	KLHL25 ( <a href="#">KLHL25 Products</a> )
Background:	Description: KLHL25 (ectoderm-neural cortex protein 2, ENC2) is a cytoplasmic protein that contains six Kelch regions and a single BTB (POZ) domain. KLHL25 is highly homologous to another Kelch-like protein, ENC1, and it is believed to operate in a manner similar to other Kelch-domain containing proteins. Kelch-domain repeat containing proteins often act as modifiers of

## Target Details

---

Actin fibers. Expressed early in embryogenesis, ENC1 helps to mediate neuronal process formation. It also appears to have a role in neural crest cell differentiation. KLHL25 likely functions as a substrate specific adapter for protein ubiquitinating complexes. KLHL25 is expressed in most tissues with highest expression in brain and liver.

Aliases: ENC2, ENC-2, FLJ12587, FLJ45015, KLHL25

---

Molecular Weight: 65 kDa

---

Gene ID: 64410

---

HGNC: 64410

## Application Details

---

Application Notes: ELISA: 1:10000, WB: 1:500 - 1:2000

Restrictions: For Research Use only

## Handling

---

Format: Liquid

Buffer: Ascitic fluid containing 0.03 % sodium azide.

Preservative: Sodium azide

Precaution of Use: This product contains Sodium azide: a POISONOUS AND HAZARDOUS SUBSTANCE which should be handled by trained staff only.

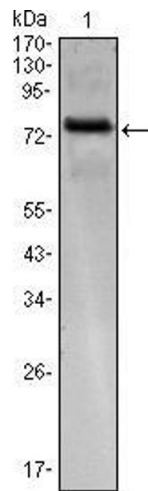
Storage: 4 °C/-20 °C

Storage Comment: 4°C, -20°C for long term storage

## Publications

---

Product cited in: Wang, Wu, Zhou, Guo, Zheng, Wang, Bi, Liu, Zhou, Guo, Sha: "Mapping of the N-linked glycoproteome of human spermatozoa." in: **Journal of proteome research**, Vol. 12, Issue 12, pp. 5750-9, (2013) ([PubMed](#)).



### Western Blotting

**Image 1.** Western blot analysis using KLHL25 mAb against KLHL25(AA: 2-230)-hIgGFc transfected HEK293 cell.