

Datasheet for ABIN969250

anti-KRT15 antibody

4 Images

2 Publications

[Go to Product page](#)

Overview

Quantity:	100 µL
Target:	KRT15
Reactivity:	Human
Host:	Mouse
Clonality:	Monoclonal
Conjugate:	This KRT15 antibody is un-conjugated
Application:	Western Blotting (WB), Immunohistochemistry (IHC), Flow Cytometry (FACS), ELISA, Immunocytochemistry (ICC)

Product Details

Immunogen:	Purified recombinant fragment of KRT15 expressed in E. coli.
Clone:	6-00E-07
Isotype:	IgG2a
Purification:	purified

Target Details

Target:	KRT15
Alternative Name:	KRT15 (KRT15 Products)
Background:	Description: The protein encoded by this gene is a member of the keratin gene family. The keratins are intermediate filament proteins responsible for the structural integrity of epithelial cells and are subdivided into cytokeratins and hair keratins. Keratin 15 is a type I keratin without

Target Details

a defined type II partner. Keratin 15 is expressed primarily in the basal keratinocytes of stratified tissues, including the fetal epidermis and fetal nail. Expression of keratin 15 is downregulated in some hyperproliferating situations, such as psoriasis and hypertrophic scars. Because keratinocytes in psoriasis and hypertrophic scars are activated, it is suggested that keratin 15 expression is not compatible with keratinocyte activation and the keratin 15 gene is downregulated to maintain the activated phenotype.

Aliases: K15, CK15, K1CO, KRT1

Molecular Weight: 49 kDa

Gene ID: 3866

HGNC: 3866

Application Details

Application Notes: ELISA: 1:10000, WB: 1:500 - 1:2000, IHC: 1:200 - 1:1000, ICC: 1:200 - 1:1000, FCM: 1:200 - 1:400

Restrictions: For Research Use only

Handling

Format: Liquid

Buffer: Ascitic fluid containing 0.03 % sodium azide.

Preservative: Sodium azide

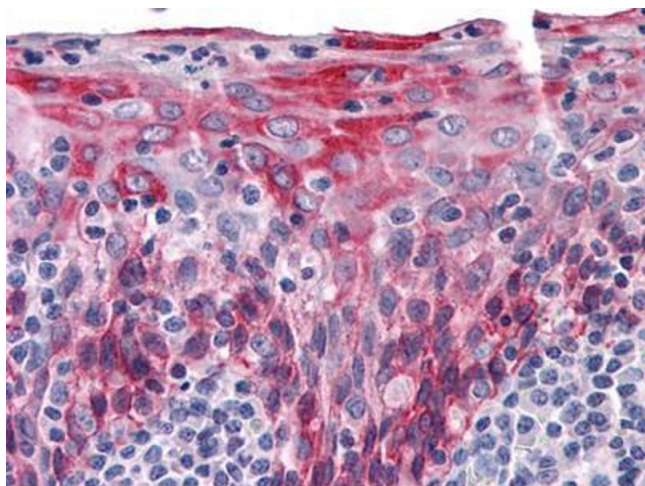
Precaution of Use: This product contains Sodium azide: a POISONOUS AND HAZARDOUS SUBSTANCE which should be handled by trained staff only.

Storage: 4 °C/-20 °C

Storage Comment: 4°C, -20°C for long term storage

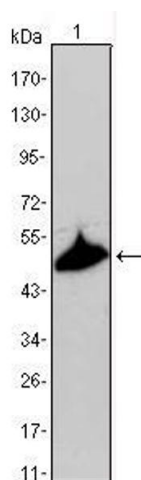
Publications

Product cited in: Jacques, Pereira, Maia, Cuzzi, Ramos-e-Silva: "Expression of cytokeratins 10, 13, 14 and 19 in oral lichen planus." in: **Journal of oral science**, Vol. 51, Issue 3, pp. 355-65, (2009) ([PubMed](#)).



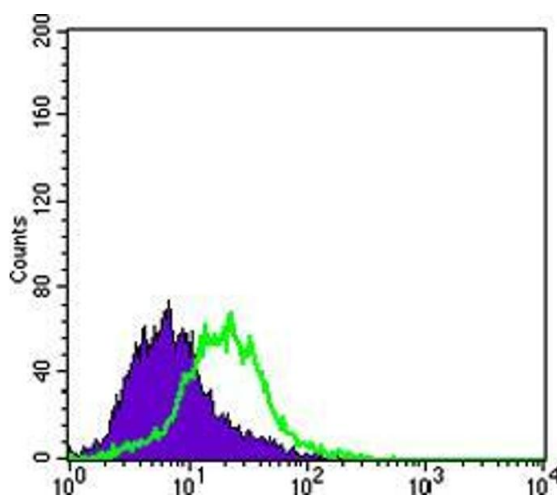
Immunohistochemistry

Image 1. Immunohistochemical analysis of paraffin-embedded human Tonsil tissues using KRT15 mouse mAb



Western Blotting

Image 2. Western blot analysis using KRT15 mouse mAb against A431 cell lysate.



Flow Cytometry

Image 3. Flow cytometric analysis of PACN-1 cells using KRT15 mouse mAb (green) and negative control (purple).

Please check the [product details page](#) for more images. Overall 4 images are available for ABIN969250.