

Datasheet for ABIN969256

## anti-Laminin beta 1 antibody (AA 31-270)

2 Images

2 Publications



[Go to Product page](#)

### Overview

Quantity:	100 µL
Target:	Laminin beta 1 (LAMB1)
Binding Specificity:	AA 31-270
Reactivity:	Human
Host:	Mouse
Clonality:	Monoclonal
Conjugate:	This Laminin beta 1 antibody is un-conjugated
Application:	Western Blotting (WB), Immunohistochemistry (IHC), ELISA

### Product Details

Immunogen:	Purified recombinant fragment of LAMB1 (aa31-270) expressed in E. coli.
Clone:	2D9G5
Isotype:	IgG2a
Purification:	purified

### Target Details

Target:	Laminin beta 1 (LAMB1)
Alternative Name:	LAMB1 ( <a href="#">LAMB1 Products</a> )
Background:	Description: LAMB1: laminin, beta 1. Laminins, a family of extracellular matrix glycoproteins, are the major noncollagenous constituent of basement membranes. They have been implicated in

## Target Details

---

a wide variety of biological processes including cell adhesion, differentiation, migration, signaling, neurite outgrowth and metastasis. Laminins are composed of 3 non identical chains: laminin alpha, beta and gamma (formerly A, B1, and B2, respectively) and they form a cruciform structure consisting of 3 short arms, each formed by a different chain, and a long arm composed of all 3 chains. Each laminin chain is a multidomain protein encoded by a distinct gene. Several isoforms of each chain have been described. Different alpha, beta and gamma chain isomers combine to give rise to different heterotrimeric laminin isoforms which are designated by Arabic numerals in the order of their discovery, i.e. alpha1beta1gamma1 heterotrimer is laminin 1. The biological functions of the different chains and trimer molecules are largely unknown, but some of the chains have been shown to differ with respect to their tissue distribution, presumably reflecting diverse functions in vivo. This gene encodes the beta chain isoform laminin, beta 1. The beta 1 chain has 7 structurally distinct domains which it shares with other beta chain isomers. The C-terminal helical region containing domains I and II are separated by domain alpha, domains III and V contain several EGF-like repeats, and domains IV and VI have a globular conformation. Laminin, beta 1 is expressed in most tissues that produce basement membranes, and is one of the 3 chains constituting laminin 1, the first laminin isolated from Engelbreth-Holm-Swarm (EHS) tumor. A sequence in the beta 1 chain that is involved in cell attachment, chemotaxis, and binding to the laminin receptor was identified and shown to have the capacity to inhibit metastasis.

Aliases: CLM, MGC142015

---

Gene ID:	3912
----------	------

---

HGNC:	3912
-------	------

## Application Details

---

Application Notes:	ELISA: 1:10000, WB: 1:500 - 1:2000, IHC: 1:200 - 1:1000
--------------------	---

---

Restrictions:	For Research Use only
---------------	-----------------------

## Handling

---

Format:	Liquid
---------	--------

---

Buffer:	Ascitic fluid containing 0.03 % sodium azide.
---------	---

---

Preservative:	Sodium azide
---------------	--------------

---

Precaution of Use:	This product contains Sodium azide: a POISONOUS AND HAZARDOUS SUBSTANCE which should be handled by trained staff only.
--------------------	--

---

## Handling

---

Storage: 4 °C/-20 °C

---

Storage Comment: 4°C, -20°C for long term storage

## Publications

---

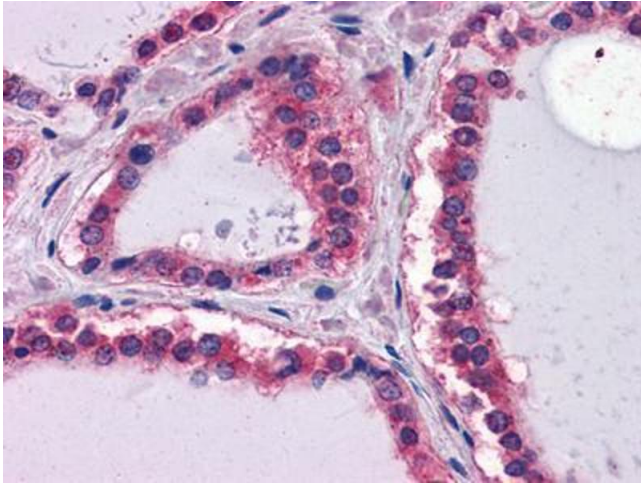
Product cited in: Gertych, Oh, Wawrowsky, Weisenberger, Tajbakhsh: "3-D DNA methylation phenotypes correlate with cytotoxicity levels in prostate and liver cancer cell models." in: **BMC pharmacology & toxicology**, Vol. 14, pp. 11, (2013) ([PubMed](#)).

Tajbakhsh: "Covisualization of methylcytosine, global DNA, and protein biomarkers for In Situ 3D DNA methylation phenotyping of stem cells." in: **Methods in molecular biology (Clifton, N.J.)**, Vol. 1052, pp. 77-88, (2013) ([PubMed](#)).

Fukuda, Ichiyanagi, Yamada, Go, Udono, Wada, Maeda, Soejima, Saitou, Ito, Sasaki: "Regional DNA methylation differences between humans and chimpanzees are associated with genetic changes, transcriptional divergence and disease genes." in: **Journal of human genetics**, Vol. 58, Issue 7, pp. 446-54, (2013) ([PubMed](#)).

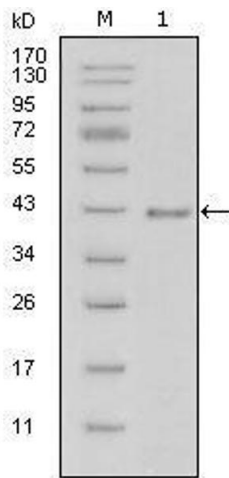
Kurita, Arai, Nakamoto, Kato, Niwa: "Determination of DNA methylation using electrochemiluminescence with surface accumulable coreactant." in: **Analytical chemistry**, Vol. 84, Issue 4, pp. 1799-803, (2012) ([PubMed](#)).

Kurita, Niwa: "DNA methylation analysis triggered by bulge specific immuno-recognition." in: **Analytical chemistry**, Vol. 84, Issue 17, pp. 7533-8, (2012) ([PubMed](#)).



### Immunohistochemistry

**Image 1.** Immunohistochemical analysis of paraffin-embedded human Thyroid tissues using LAMB1 mouse mAb



### Western Blotting

**Image 2.** Western blot analysis using LAMB1 mouse mAb against truncated LAMB1-His recombinant protein (1).