

Datasheet for ABIN969258  
**anti-Lipocalin 1 antibody**[Go to Product page](#)

3 Images

2 Publications

## Overview

Quantity:	100 µL
Target:	Lipocalin 1 (LCN1)
Reactivity:	Human
Host:	Mouse
Clonality:	Monoclonal
Conjugate:	This Lipocalin 1 antibody is un-conjugated
Application:	Western Blotting (WB), Immunohistochemistry (IHC), ELISA, Immunocytochemistry (ICC)

## Product Details

Immunogen:	Purified recombinant fragment of LCN1 expressed in E. coli.
Clone:	10B10
Isotype:	IgG1
Purification:	purified

## Target Details

Target:	Lipocalin 1 (LCN1)
Alternative Name:	LCN1 ( <a href="#">LCN1 Products</a> )
Background:	Description: LCN1: lipocalin 1 (tear prealbumin), also known as TP, PMFA, VEGP. Entrez Protein: NP_002288. The protein belongs to the lipocalin family. Lipocalins are a group of extracellular proteins that are able to bind lipophiles by enclosure within their structures to minimize solvent contact. This protein may bind hydrophobic ligands and inhibit cysteine proteinases. It may also

## Target Details

play a role in taste reception and could be necessary for the concentration and delivery of sapid molecules in the gustatory system.

Aliases: TP, PMFA, VEGP

Molecular Weight: 19.2 kDa

Gene ID: 3933

HGNC: 3933

## Application Details

Application Notes: ELISA: 1:10000, WB: 1:500 - 1:2000, IHC: 1:200 - 1:1000, ICC: 1:200 - 1:1000

Restrictions: For Research Use only

## Handling

Format: Liquid

Buffer: Ascitic fluid containing 0.03 % sodium azide.

Preservative: Sodium azide

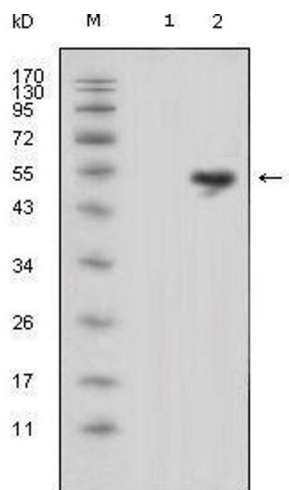
Precaution of Use: This product contains Sodium azide: a POISONOUS AND HAZARDOUS SUBSTANCE which should be handled by trained staff only.

Storage: 4 °C/-20 °C

Storage Comment: 4°C, -20°C for long term storage

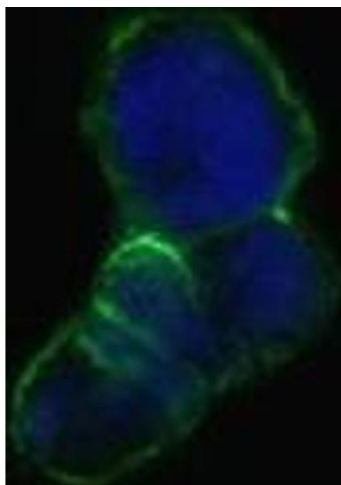
## Publications

Product cited in: Wang, Wu, Zhou, Guo, Zheng, Wang, Bi, Liu, Zhou, Guo, Sha: "Mapping of the N-linked glycoproteome of human spermatozoa." in: **Journal of proteome research**, Vol. 12, Issue 12, pp. 5750-9, (2013) ([PubMed](#)).



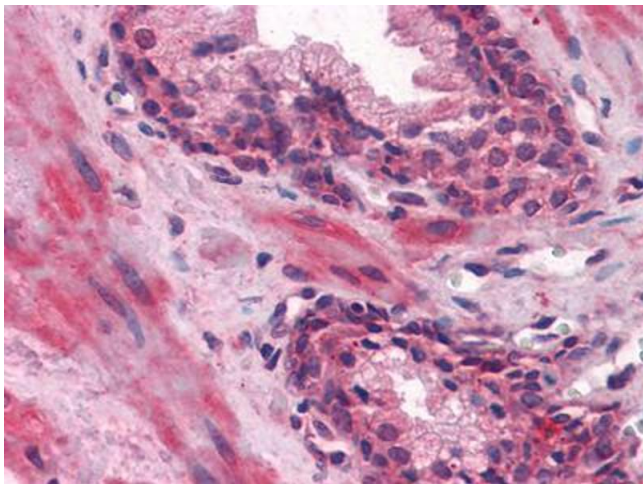
### Western Blotting

**Image 1.** Western blot analysis using LCN1 mouse mAb against HEK293 (1) and LCN1-hlgGfc transfected HEK293 cell lysate (2).



### Immunofluorescence

**Image 2.** Confocal immunofluorescence analysis of methanol-fixed HEK293 cells trasfected with LCN1-hlgGfc using LCN1 mouse mAb(green), showing membrane localization. Blue: DRAQ5 fluorescent DNA dye.



### Immunohistochemistry

**Image 3.** Immunohistochemical analysis of paraffin-embedded human Prostate tissues using LCN1 mouse mAb