



Datasheet for ABIN969259

## anti-LHX2 antibody



[Go to Product page](#)

### 3 Images

#### Overview

Quantity:	100 µL
Target:	LHX2
Reactivity:	Human
Host:	Mouse
Clonality:	Monoclonal
Conjugate:	This LHX2 antibody is un-conjugated
Application:	Western Blotting (WB), ELISA, Immunocytochemistry (ICC)

#### Product Details

Immunogen:	Purified recombinant fragment of human LHX2 expressed in E. coli.
Clone:	6G2
Isotype:	IgG1
Purification:	purified

#### Target Details

Target:	LHX2
Alternative Name:	LHX2 ( <a href="#">LHX2 Products</a> )
Background:	Description: This gene encodes a protein belonging to a large protein family, members of which carry the LIM domain, a unique cysteine-rich zinc-binding domain. The encoded protein may function as a transcriptional regulator. The protein can recapitulate or rescue phenotypes in Drosophila caused by a related protein, suggesting conservation of function during evolution.

## Target Details

Aliases: LH2, hLhx2, MGC138390, LHX2

Molecular Weight: 44 kDa

Gene ID: 9355

HGNC: 9355

Pathways: [Tube Formation](#)

## Application Details

Application Notes: ELISA: 1:10000, WB: 1:500 - 1:2000, ICC: 1:200 - 1:1000

Restrictions: For Research Use only

## Handling

Format: Liquid

Buffer: Ascitic fluid containing 0.03 % sodium azide.

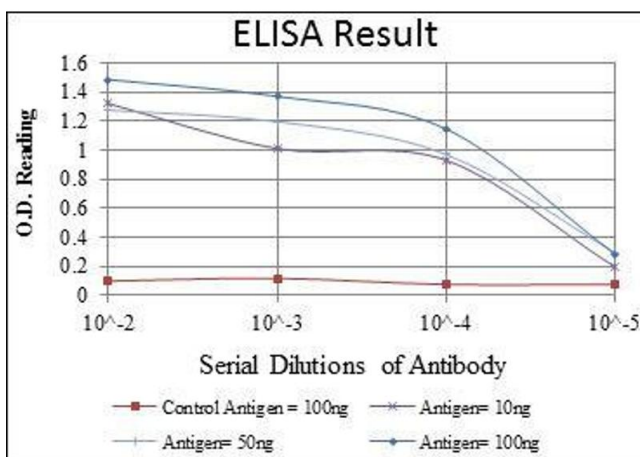
Preservative: Sodium azide

Precaution of Use: This product contains Sodium azide: a POISONOUS AND HAZARDOUS SUBSTANCE which should be handled by trained staff only.

Storage: 4 °C/-20 °C

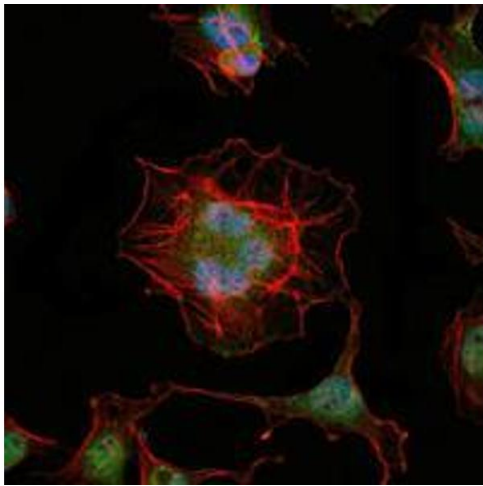
Storage Comment: 4°C, -20°C for long term storage

## Images



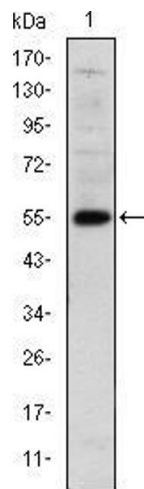
### ELISA

**Image 1.** Red: Control Antigen (100 ng), Purple: Antigen (10 ng), Green: Antigen (50 ng), Blue: Antigen (100 ng),



### Immunofluorescence

**Image 2.** Immunofluorescence analysis of HeLa cells using LHX2 mouse mAb (green). Blue: DRAQ5 fluorescent DNA dye. Red: Actin filaments have been labeled with Alexa Fluor-555 phalloidin.



### Western Blotting

**Image 3.** Western blot analysis using LHX2 mAb against human LHX2 (AA: 200-406) recombinant protein. (Expected MW is 55 kDa)