

Datasheet for ABIN969269  
**anti-MAP2K6 antibody**[Go to Product page](#)

4 Images

1 Publication

## Overview

Quantity:	100 µL
Target:	MAP2K6
Reactivity:	Human, Mouse
Host:	Mouse
Clonality:	Monoclonal
Application:	Western Blotting (WB), ELISA, Flow Cytometry (FACS), Immunocytochemistry (ICC)

## Product Details

Immunogen:	Purified recombinant fragment of human MAP2K6 expressed in E. coli.
Clone:	3H12C8
Isotype:	IgG1
Purification:	purified

## Target Details

Target:	MAP2K6
Alternative Name:	MAP2K6 ( <a href="#">MAP2K6 Products</a> )
Background:	Description: This gene encodes a member of the dual specificity protein kinase family, which functions as a mitogen-activated protein (MAP) kinase kinase. MAP kinases, also known as extracellular signal-regulated kinases (ERKs), act as an integration point for multiple biochemical signals. This protein phosphorylates and activates p38 MAP kinase in response to inflammatory cytokines or environmental stress. As an essential component of p38 MAP kinase

## Target Details

mediated signal transduction pathway, this gene is involved in many cellular processes such as stress induced cell cycle arrest, transcription activation and apoptosis. Tissue specificity: Isoform 2 is only expressed in skeletal muscle. Isoform 1, on the other hand, is found in skeletal muscle, heart, and in lesser extent in liver or pancreas .

Aliases: MEK6, MKK6, MAPKK6, PRKMK6, SAPKK3, MAP2K6

Molecular Weight: 38 kDa

Gene ID: 5608

HGNC: 5608

Pathways: [MAPK Signaling](#), [TLR Signaling](#), [Activation of Innate immune Response](#), [Regulation of Muscle Cell Differentiation](#), [Toll-Like Receptors Cascades](#)

## Application Details

Application Notes: ELISA: 1:10000, WB: 1:500 - 1:2000, ICC: 1:200 - 1:1000, FCM: 1:200 - 1:400

Restrictions: For Research Use only

## Handling

Format: Liquid

Buffer: Ascitic fluid containing 0.03 % sodium azide.

Preservative: Sodium azide

Precaution of Use: This product contains Sodium azide: a POISONOUS AND HAZARDOUS SUBSTANCE which should be handled by trained staff only.

Storage: 4 °C/-20 °C

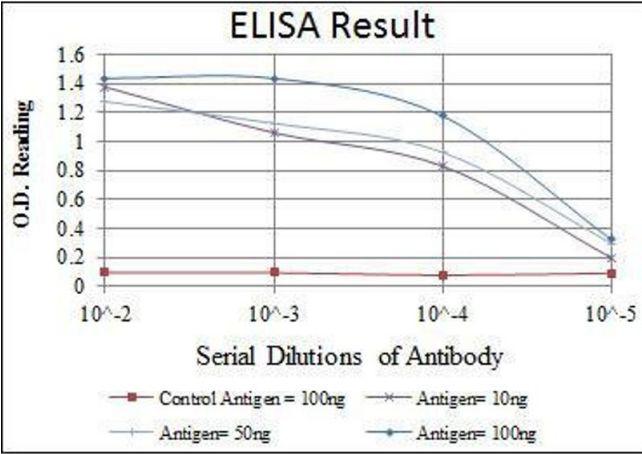
Storage Comment: 4°C, -20°C for long term storage

## Publications

Product cited in: Toka, Dunaway, Smaltz, Szulc-Dąbrowska, Drnevich, Mielcarska, Bossowska-Nowicka, Schweizer: "Bacterial and viral pathogen-associated molecular patterns induce divergent early transcriptomic landscapes in a bovine macrophage cell line." in: **BMC genomics**, Vol. 20, Issue 1, pp. 15, (2019) ([PubMed](#)).

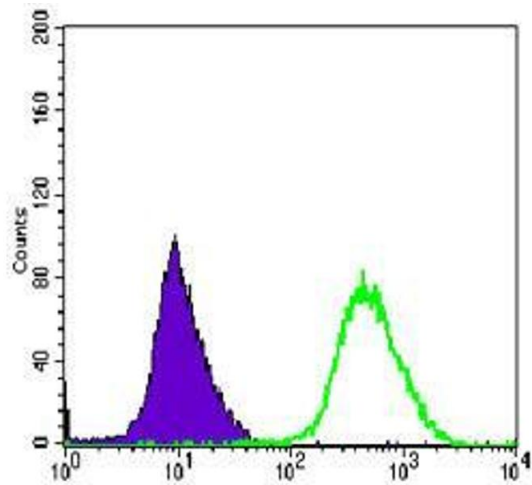
Murakami, Maeda, Yonezawa, Matsuki: "CC chemokine ligand 2 and CXC chemokine ligand 8 as

neutrophil chemoattractant factors in canine idiopathic polyarthritis." in: **Veterinary immunology and immunopathology**, Vol. 182, pp. 52-58, (2016) ([PubMed](#)).



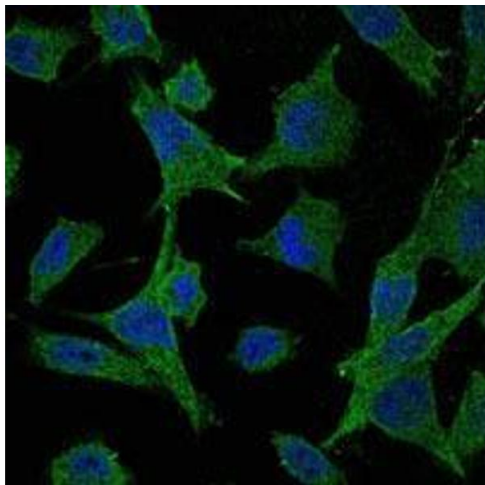
#### ELISA

**Image 1.** Red: Control Antigen (100 ng), Purple: Antigen (10 ng), Green: Antigen (50 ng), Blue: Antigen (100 ng),



#### Flow Cytometry

**Image 2.** Flow cytometric analysis of Hela cells using MAP2K6 mouse mAb (green) and negative control (purple).



#### Immunofluorescence

**Image 3.** Immunofluorescence analysis of Hela cells using MAP2K6 mouse mAb (green). Blue: DRAQ5 fluorescent DNA dye.

Please check the [product details page](#) for more images. Overall 4 images are available for ABIN969269.