

Datasheet for ABIN969270

anti-MAP2K6 antibody

3 Images

1 Publication

[Go to Product page](#)

Overview

Quantity:	100 µL
Target:	MAP2K6
Reactivity:	Human, Mouse
Host:	Mouse
Clonality:	Monoclonal
Conjugate:	This MAP2K6 antibody is un-conjugated
Application:	Western Blotting (WB), ELISA, Immunohistochemistry (IHC)

Product Details

Immunogen:	Purified recombinant fragment of human MAP2K6 expressed in E. coli.
Clone:	3H12B9
Isotype:	IgG1
Purification:	purified

Target Details

Target:	MAP2K6
Alternative Name:	MAP2K6 (MAP2K6 Products)
Background:	Description: This gene encodes a member of the dual specificity protein kinase family, which functions as a mitogen-activated protein (MAP) kinase kinase. MAP kinases, also known as extracellular signal-regulated kinases (ERKs), act as an integration point for multiple biochemical signals. This protein phosphorylates and activates p38 MAP kinase in response to

Target Details

inflammatory cytokines or environmental stress. As an essential component of p38 MAP kinase mediated signal transduction pathway, this gene is involved in many cellular processes such as stress induced cell cycle arrest, transcription activation and apoptosis. Tissue specificity: Isoform 2 is only expressed in skeletal muscle. Isoform 1, on the other hand, is found in skeletal muscle, heart, and in lesser extent in liver or pancreas.

Aliases: MEK6, MKK6, MAPKK6, PRKMK6, SAPKK3, MAP2K6

Molecular Weight:	38 kDa
-------------------	--------

Gene ID:	5608
----------	------

HGNC:	5608
-------	------

Pathways:	MAPK Signaling , TLR Signaling , Activation of Innate immune Response , Regulation of Muscle Cell Differentiation , Toll-Like Receptors Cascades
-----------	--

Application Details

Application Notes:	ELISA: 1:10000, WB: 1:500 - 1:2000, IHC: 1:200 - 1:1000
--------------------	---

Restrictions:	For Research Use only
---------------	-----------------------

Handling

Format:	Liquid
---------	--------

Buffer:	Ascitic fluid containing 0.03 % sodium azide.
---------	---

Preservative:	Sodium azide
---------------	--------------

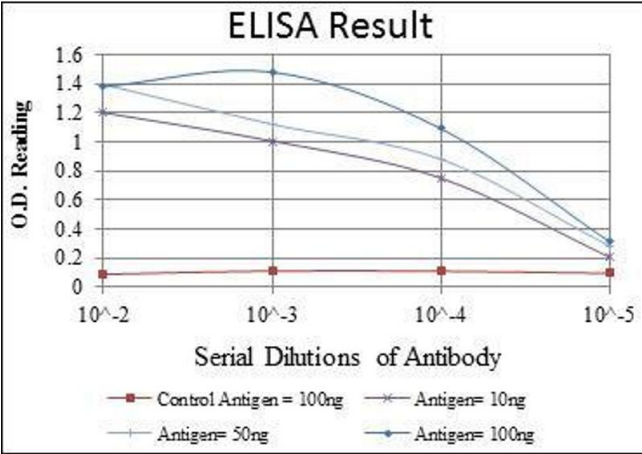
Precaution of Use:	This product contains Sodium azide: a POISONOUS AND HAZARDOUS SUBSTANCE which should be handled by trained staff only.
--------------------	--

Storage:	4 °C/-20 °C
----------	-------------

Storage Comment:	4°C, -20°C for long term storage
------------------	----------------------------------

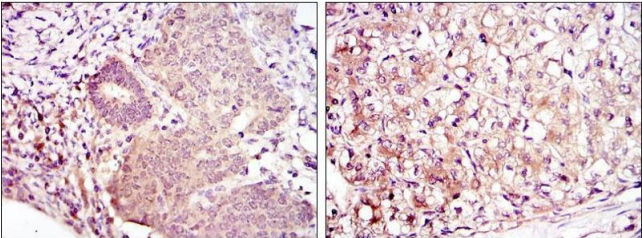
Publications

Product cited in:	Jacques, Pereira, Maia, Cuzzi, Ramos-e-Silva: "Expression of cytokeratins 10, 13, 14 and 19 in oral lichen planus." in: Journal of oral science , Vol. 51, Issue 3, pp. 355-65, (2009) (PubMed).
-------------------	---



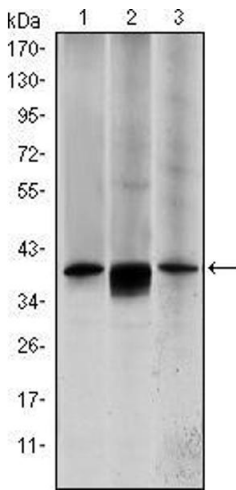
ELISA

Image 1. Red: Control Antigen (100 ng), Purple: Antigen (10 ng), Green: Antigen (50 ng), Blue: Antigen (100 ng),



Immunohistochemistry

Image 2. Immunohistochemical analysis of paraffin-embedded ovarian cancer (left) and kidney cancer (right) using MAP2K6 mouse mAb with DAB staining.



Western Blotting

Image 3. Western blot analysis using MAP2K6 mouse mAb against HepG2 (1), MCF-7 (2) and NIH/3T3 (3) cell lysate.