

Datasheet for ABIN969278

**anti-MATN1 antibody****2** Images**1** Publication[Go to Product page](#)

## Overview

Quantity:	100 µL
Target:	MATN1
Reactivity:	Human
Host:	Mouse
Clonality:	Monoclonal
Conjugate:	This MATN1 antibody is un-conjugated
Application:	Western Blotting (WB), ELISA, Immunocytochemistry (ICC)

## Product Details

Immunogen:	Purified recombinant fragment of human MATN1 expressed in E. coli.
Clone:	5A8
Isotype:	IgG1
Purification:	purified

## Target Details

Target:	MATN1
Alternative Name:	MATN1 ( <a href="#">MATN1 Products</a> )
Background:	Description: This gene catalyzes a two-step reaction that involves the transfer of the adenosyl moiety of ATP to methionine to form S-adenosylmethionine and triphosphosphate, which is subsequently cleaved to PPi and Pi. S-adenosylmethionine is the source of methyl groups for most biological methylations. The encoded protein is found as a homotetramer (MAT I) or a

## Target Details

homodimer (MAT III) whereas a third form, MAT II (gamma), is encoded by the MAT2A gene. Mutations in this gene are associated with methionine adenosyltransferase deficiency.  
Aliases: MAT, SAMS, MATA1, SAMS1, MAT1A

Molecular Weight: 54 kDa

Gene ID: 4143

HGNC: 4143

## Application Details

Application Notes: ELISA: 1:10000, WB: 1:500 - 1:2000, ICC: 1:200 - 1:1000

Restrictions: For Research Use only

## Handling

Format: Liquid

Buffer: Ascitic fluid containing 0.03 % sodium azide.

Preservative: Sodium azide

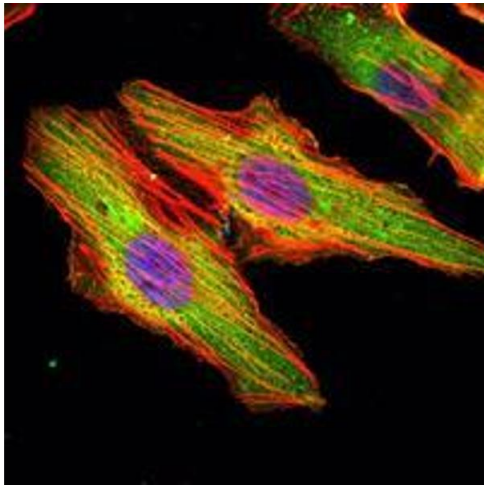
Precaution of Use: This product contains Sodium azide: a POISONOUS AND HAZARDOUS SUBSTANCE which should be handled by trained staff only.

Storage: 4 °C/-20 °C

Storage Comment: 4°C, -20°C for long term storage

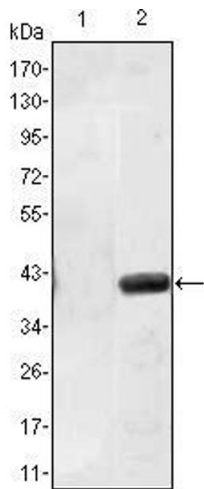
## Publications

Product cited in: Wang, Wu, Zhou, Guo, Zheng, Wang, Bi, Liu, Zhou, Guo, Sha: "Mapping of the N-linked glycoproteome of human spermatozoa." in: **Journal of proteome research**, Vol. 12, Issue 12, pp. 5750-9, (2013) ([PubMed](#)).



Immunofluorescence

**Image 1.** Immunofluorescence analysis of HeLa cells using MATN1 mouse mAb (green). Blue: DRAQ5 fluorescent DNA dye. Red: Actin filaments have been labeled with Alexa Fluor-555 phalloidin.



Western Blotting

**Image 2.** Western blot analysis using MATN1 mAb against HEK293 (1) and MATN1(AA: 427-496)-hlgGFc transfected HEK293 (2) cell lysate.